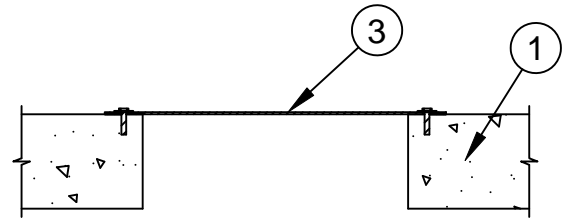
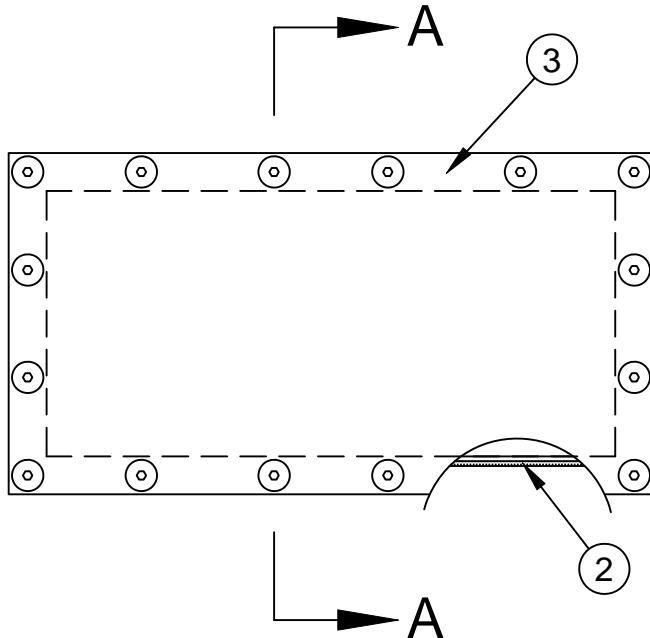




## System No. C-AJ-0113

F Ratings - 2, 3 and 4 Hr (See Items 1 and 3)

T Rating - 0 Hr



### Section A-A

- 1. Floor or Wall Assembly** - Min 4-1/2 in. (114 mm) thick lightweight or normal weight (100-150 pcf or 1600-2400 kg/m<sup>3</sup>) concrete. Min thickness of floor or wall assembly to be 6 in. (152 mm) for 3 hr F Rating and 7-1/2 in. (191 mm) for 4 hr F Rating. Wall may also be constructed of any UL Classified **Concrete Blocks\***. Max area of opening 900 sq in. (0.58 m<sup>2</sup>) with max dimension of 30 in. (762 mm) for 2 hr F Rating. Max area of opening 240 sq in. (0.15 m<sup>2</sup>) with max dimension of 24 in. (610 mm) for 3 and 4 hr F Ratings.

See **Concrete Blocks** (CAZT) category in the Fire Resistance Directory for names of manufacturers.

- 2. Fill, Void or Cavity Materials\* - Putty or Sealant** - Nom 3/16 in. (5 mm) wide by 3/16 in. (5 mm) thick strip of putty or nom 1/4 in. (6 mm) diam bead of sealant applied beneath intumescent sheet around entire perimeter of through opening on surface of floor or wall.

**SPECIFIED TECHNOLOGIES INC** - SpecSeal Putty, SpecSeal Series SSS Sealant or SpecSeal LCI Sealant

- 3. Fill, Void or Cavity Materials\* - Composite Sheet** - Rigid aluminum foil-faced intumescent sheet with steel mesh and galv steel sheet backer. Sheets cut to lap a min of 2 in. (51 mm) on the floor or wall surfaces. Sheet installed on top surface of floor or both surfaces of wall. Sheet to be installed on both surfaces of floor for 3 and 4 hr F Ratings. Sheet to be installed with the galv steel sheet backer exposed (aluminum foil facing against floor or wall surface) and secured to floor or wall surface with min 3/16 in. (5 mm) diam by 1-1/4 in. (32 mm) long steel concrete screws, in conjunction with min 1-1/4 in. (32 mm) diam steel fender washers. Spacing of fasteners not to exceed 6 in. (152 mm) OC.

**SPECIFIED TECHNOLOGIES INC** - SpecSeal CS Composite Sheet

\*Bearing the UL Classification Mark



**Specified Technologies Inc. 210 Evans Way Somerville, NJ 08876**

Reproduced courtesy of Underwriters Laboratories, Inc.

Created or Revised: January 2, 2009

(800)992-1180 • (908)526-8000 • FAX (908)231-8415 • E-Mail:techserv@stifiarestop.com • Website:www.stifiarestop.com



C-AJ-0113  
PAGE 1 OF 1