



## **System No. FW-D-0005**

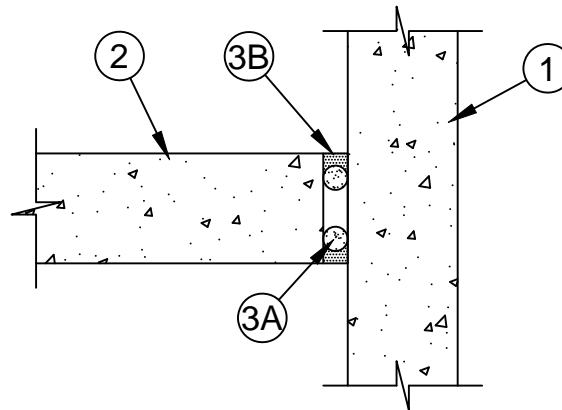
Assembly Rating - 3 Hr

Nominal Joint Width - 1 In.

L Rating At Ambient - Less Than 1 CFM/Lin Ft

L Rating At 400°F - Less Than 1 CFM/Lin Ft

Class II Movement Capabilities - 12.5% Compression Or Extension



1. **Wall Assembly** - Min 4-1/2 in. (114 mm) thick reinforced lightweight or normal weight (100-150 pcf or 1600-2400 kg/m<sup>3</sup>) structural concrete. Wall may also be constructed of any UL Classified **Concrete Blocks**\*. See **Concrete Blocks** (CAZT) category in the Fire Resistance Directory for names of manufacturers.
2. **Floor Assembly** - Min 4-1/2 in. (114 mm) thick reinforced lightweight or normal weight (100-150 pcf or 1600-2400 kg/m<sup>3</sup>) structural concrete.
3. **Joint System** - **Max separation between edge of floor and face of wall (at time of installation of joint system) is 1 in. (25 mm). The joint system is designed to accommodate a max 12.5 percent compression or extension from it's installed width.** The joint system shall consist of the following:
  - A. **Packing Material** - Open or closed cell polyethylene or polyurethane foam backer rod used as a form to prevent the leakage of fill material. Packing material to be recessed from both surfaces of the floor as required to accommodate the required thickness of fill material.
  - B. **Fill, Void or Cavity Material\* - Sealant** - Min 1/2 in. (13 mm) thickness of fill material applied within the joint, flush with both surfaces of floor.  
**SPECIFIED TECHNOLOGIES INC** - SpecSeal ES Sealant  
\*Bearing the UL Classification Mark



**Specified Technologies Inc. 210 Evans Way Somerville, NJ 08876**

Reproduced courtesy of Underwriters Laboratories, Inc.

Created or Revised: May 21, 2008

(800)992-1180 • (908)526-8000 • FAX (908)231-8415 • E-Mail:techserv@stifirestop.com • Website:www.stifirestop.com



FW-D-0005  
PAGE 1 OF 1