



System No. FW-D-1006

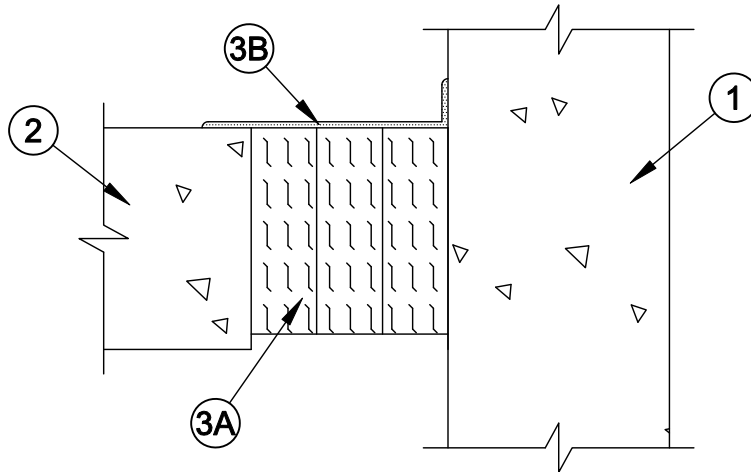
Assembly Rating - 2 Hr

Nominal Joint Width - 4 In.

L Rating At Ambient - Less Than 1 CFM/Lin Ft

L Rating At 400°F - Less Than 1 CFM/Lin Ft

Class II Movement Capabilities - 15% Compression or Extension



1. **Wall Assembly** - Min 4-1/2 in. (114 mm) thick reinforced lightweight or normal weight (100-150 pcf or 1600-2400 kg/m3) structural concrete. Wall may also be constructed of any UL Classified **Concrete Blocks***.
See **Concrete Blocks** (CAZT) category in the Fire Resistance Directory for names of manufacturers.
2. **Floor Assembly** - Min 4-1/2 in. (114 mm) thick reinforced lightweight or normal weight (100 - 150 pcf or 1600-2400 kg/m3) structural concrete.
3. **Joint System** - **Max separation between edge of floor and face of wall (at time of installation of joint system) is 4 in. (102 mm). The joint system is designed to accommodate a max 15 percent compression or extension from it's installed width.** The joint system shall consist of the following:
 - A. **Forming Material*** - Min 4 pcf (64 kg/m3) mineral wool batt insulation installed in joint opening as a permanent form. Pieces of batt cut to min width of 4 in. (102 mm) and installed edge-first into joint opening, parallel with joint direction, such that batt sections are compressed min 33 percent in thickness and such that the compressed batt sections are recessed from top surface of the floor as required to accommodate the required thickness of fill material. Adjoining lengths of batt to be tightly-butted with butted seams spaced min 16 in. (406 mm) apart along the length of the joint.
FIBREX INSULATIONS INC - FBX Safing Insulation.
IIG MINWOOL L L C - MinWool-1200 Safing
ROCK WOOL MANUFACTURING CO - Delta Board
ROCKWOOL MALAYSIA SDN.BHD - SAFE
ROXUL INC - SAFE
THERMAFIBER INC - Type SAF
 - B. **Fill, Void or Cavity Material* - Spray** - Min 1/8 in. (3.2 mm) wet thickness or 1/16 in. (1.6 mm) dry thickness of fill material applied within the joint, flush with top surface of floor and lapping a min 1 in. (25 mm) onto the top surface of the floor and side of wall.
SPECIFIED TECHNOLOGIES INC - SpecSeal AS200 Elastomeric Spray

*Bearing the UL Classification Mark



Specified Technologies Inc. 210 Evans Way Somerville, NJ 08876

Reproduced courtesy of Underwriters Laboratories, Inc.

Created or Revised: April 19, 2011

(800)992-1180 • (908)526-8000 • FAX (908)231-8415 • E-Mail:techserv@stifirestop.com • Website:www.stifirestop.com



FW-D-1006
PAGE 1 OF 1