



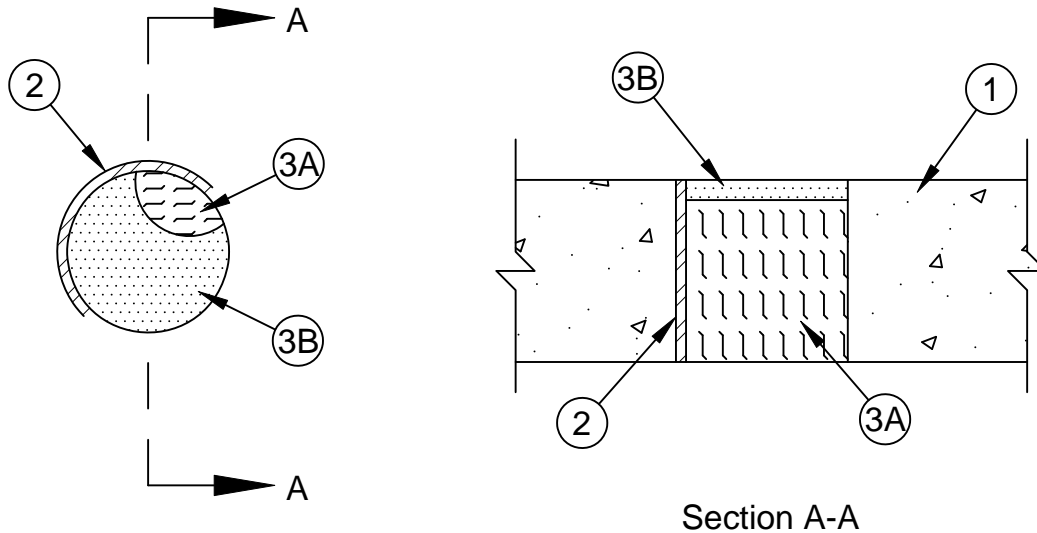
System No. C-AJ-0094

F Rating - 2 Hr

T Rating - 2 Hr

L Rating At Ambient - Less Than 1 CFM/sq ft

L Rating At 400 F - Less Than 1 CFM/sq ft



Section A-A

- 1. Floor or Wall Assembly** - Min 4-1/2 in. thick reinforced lightweight or normal weight (100-150 pcf) concrete floor or min 5 in. thick reinforced lightweight or normal weight (100-150 pcf) concrete wall. Wall may also be constructed of any UL Classified **Concrete Blocks***. Max diam of opening is 4 in.

See **Concrete Blocks** (CAZT) or **Precast Concrete Units** (CFTV) categories in the Fire Resistance Directory for names of manufacturers.

- 2. Metallic or Nonmetallic Sleeve** - Nom 4 in. diam (or smaller) Schedule 10 (or heavier) steel pipe sleeve or nom 4 in. diam (or smaller) Schedule 40 PVC pipe sleeve. Sleeve cast or grouted into floor or wall assembly flush with floor or wall surfaces.
- 3. Firestop System** - The firestop system consists of the following items:

- A. Packing Material** - Mineral wool batt insulation, nom 4 pcf, tightly packed to min 4 in. depth. Mineral wool recessed from top surface of floor assembly or both surfaces of wall as required to accommodate sealant thickness (Item 3B).
- B. Fill Void or Cavity Materials* - Sealant** - Min 1/2 in. thickness of fill material applied within annulus flush with top surface of floor or both surfaces of wall assembly.

SPECIFIED TECHNOLOGIES INC - SpecSeal LCI Sealant or SpecSeal Series SSS Sealant

Note: L Ratings apply when SpecSeal SSS Series Sealant is used.

*Bearing the UL Classification Mark



Specified Technologies Inc. 210 Evans Way Somerville, NJ 08876

Reproduced courtesy of Underwriters Laboratories, Inc.

Created or Revised: January 2, 2009

(800)992-1180 • (908)526-8000 • FAX (908)231-8415 • E-Mail:techserv@stifirestop.com • Website:www.stifirestop.com



CAJ0094
PAGE 1 OF 1