



## System No. C-AJ-1030

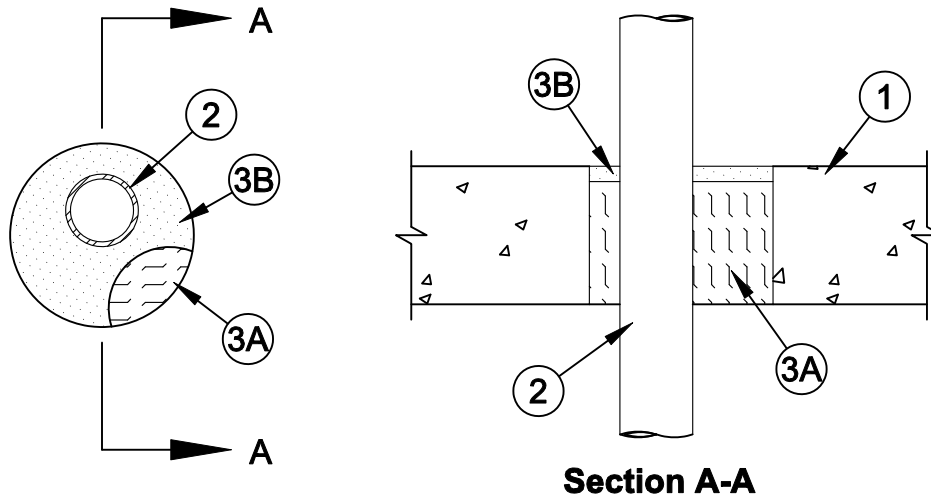
F Rating - 3 Hr

T Ratings - 0 and 1/2 Hr (See Item 3B)

L Rating At Ambient - Less Than 1 CFM/sq ft

L Rating At 400 F - Less Than 1 CFM/sq ft

W Rating - Class 1 (See Item 3B)



- Floor or Wall Assembly** - Min 4-1/2 in. reinforced lightweight or normal weight (100-150 pcf) concrete floor assembly. The min thickness of the wall assembly is 5 in. (127 mm). Wall may also be constructed of any UL Classified **Concrete Blocks\***. Max diam of opening is 6 in. (152 mm).

See **Concrete Block** (CAZT) category in the Fire Resistance Directory for names of manufacturers.

- Through Penetrants** - One metallic pipe, conduit or tubing to be installed either concentrically or eccentrically within the firestop system. The annular space shall be min 1 in. (25 mm) to max 2-5/8 in. (67 mm). Pipe to be rigidly supported on both sides of floor or wall assembly. The following types and sizes of metallic pipes, conduits or tubing may be used:

A. **Steel Pipe** - Nom 2 in. (51 mm) diam (or smaller) Schedule 5 (or heavier) steel pipe.

B. **Conduit** - Nom 2 in. (51 mm) diam (or smaller) steel electrical metallic tubing or rigid galv steel conduit.

- Firestop System** - The firestop system shall consist of the following:

A. **Packing Material** - Min 4 in. (102 mm) thickness of min 4 pcf (64 kg/m<sup>3</sup>) mineral wool batt insulation firmly packed into opening as a permanent form. Packing material to be recessed from top surface of floor or from both surfaces of wall as required to accommodate the required thickness of fill material.

B. **Fill, Void or Cavity Material - Caulk** - Min 1/2 in. (13 mm) depth of fill material applied within the annulus flush with top surface of floor or with both surfaces of wall.

**MOMENTIVE PERFORMANCE MATERIALS** - Pensil 100 Caulk for floors and walls

**SPECIFIED TECHNOLOGIES INC** - Pensil 100 Sealant for floors and walls, Pensil 300 Sealant or SpecSeal Series SIL300 Sealant for floors and walls and Pensil 300 S/L or SpecSeal Series SIL300SL Sealants for floors only.

**W Rating applies only when Pensil 300, Pensil 300 S/L, SpecSeal Series SIL300 or SpecSeal Series SIL300SL Sealants are used.**

\*Bearing the UL Classification Mark



**Specified Technologies Inc. 210 Evans Way Somerville, NJ 08876**

Reproduced courtesy of Underwriters Laboratories, Inc.

Created or Revised: November 26, 2008

(800)992-1180 • (908)526-8000 • FAX (908)231-8415 • E-Mail:techserv@stifirestop.com • Website:www.stifirestop.com



C-AJ-1030  
PAGE 1 OF 1