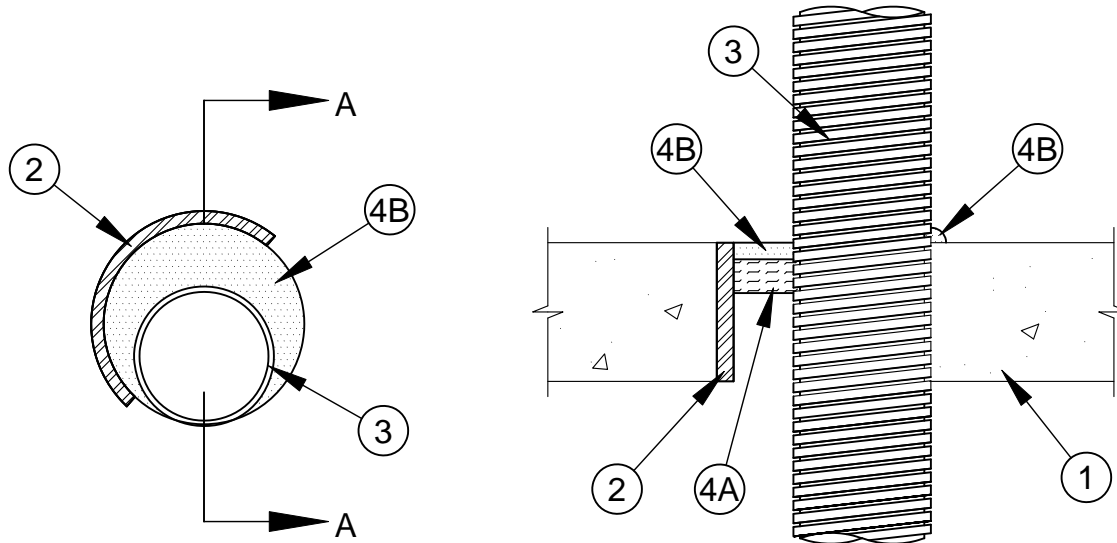




System No. C-AJ-1464

F Ratings - 2 and 3 Hr (See Item 3)

T Rating - 0 Hr



Section A-A

1. **Floor or Wall Assembly** - Min 4-1/2 in. thick reinforced lightweight or normal weight (100-150 pcf) concrete. Diam of circular through opening in floor or wall assembly to be 3/4 in. to 1-1/2 in. larger than diam of flexible metal conduit (Item 3) installed in through opening. Wall may also be constructed of any UL Classified **Concrete Blocks***. Max diam of opening is 6 in.
See **Concrete Blocks** (CAZT) category in the Fire Resistance Directory for names of manufacturers.
2. **Metallic Sleeve** - (Optional) - Nom 6 in. diam (or smaller) Schedule 10 (or heavier) steel sleeve cast or grouted into floor or wall assembly, flush with floor or wall surfaces.
3. **Through Penetrating Product*** - Nom 4 in. diam (or smaller) aluminum **Flexible Metal Conduit#** or nom 3/4 in. diam (or smaller) steel **Flexible Metal Conduit#**. Max one conduit per opening. The annular space shall be min 0 in. (point contact) to max 1-1/2 in. When aluminum conduit is used, the F Rating is 2 hr. When steel conduit is used, the F Rating is 3 hr. Flexible metal conduit to be rigidly supported on both sides of floor or wall assembly.

ALFLEX CORP

4. **Firestop System** - The firestop system shall consist of the following:
 - A. **Packing Material** - Min 1 in. thickness of 4 pcf mineral wool firmly packed into opening as a permanent form. Packing material to be recessed from top surface of floor or both surfaces of wall as required to accommodate the required thickness of fill material.
 - B. **Fill, Void or Cavity Material* - Sealant** - Min 1 in. thickness of fill material applied within the annulus, flush with top surface of floor or with both wall surfaces. At point contact location, apply min 1/4 in. thick bead of fill material at the conduit/concrete interface on the top surface of the floor or both surfaces of the wall.

SPECIFIED TECHNOLOGIES INC - SpecSeal Series SSS Sealant or SpecSeal LCI Sealant

#Bearing the UL Listing Mark

*Bearing the UL Classification Mark



Specified Technologies Inc. 210 Evans Way Somerville, NJ 08876

Reproduced courtesy of Underwriters Laboratories, Inc.

Created or Revised: January 2, 2009

(800)992-1180 • (908)526-8000 • FAX (908)231-8415 • E-Mail:techserv@stifirestop.com • Website:www.stifirestop.com



C-AJ-1464
PAGE 1 OF 1