

### System No. C-AJ-2063

F Ratings - 1-1/2 and 2 Hr (See Item 2)

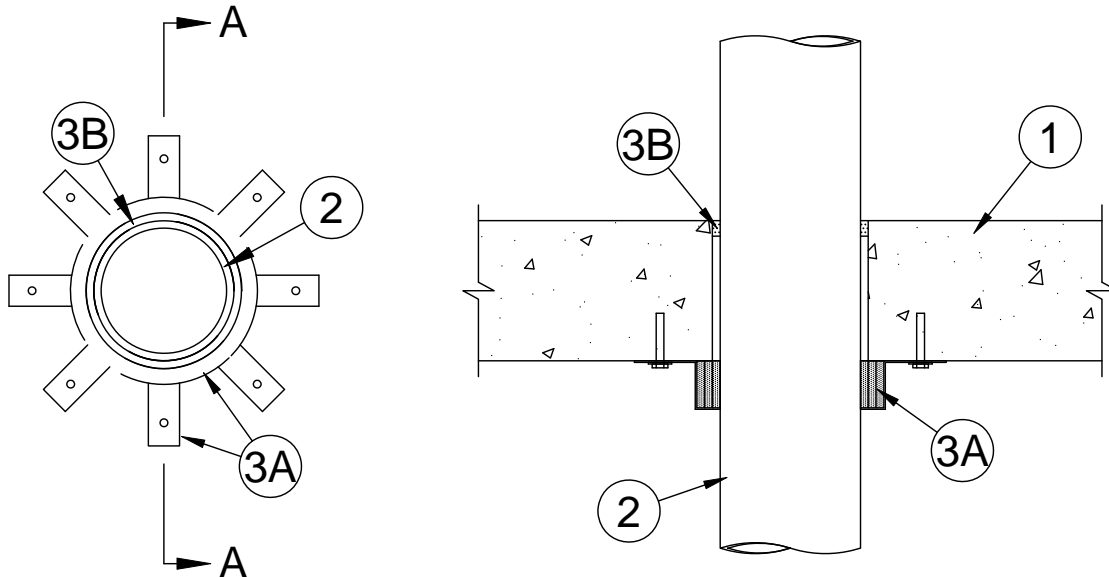
FT Ratings - 1-1/2 and 2 Hr (See Item 2)

FH Ratings - 1-1/2 and 2 Hr (See Item 2)

FTH Ratings - 1-1/2 and 2 Hr (See Item 2)

L Rating At Ambient - Less Than Less Than 5.1 L/s/m<sup>2</sup>

L Rating at 204 C - Less Than Less Than 5.1 L/s/m<sup>2</sup>



**Section A-A**

System tested with a pressure differential of 50 Pa between the exposed and the unexposed surfaces with the higher pressure on the exposed side.

1. **Floor or Wall Assembly** - Min 114 mm (4-1/2 in.) thick reinforced low-density or normal-density (1600-2400 kg/m<sup>3</sup> or 100-150 pcf) concrete floor or wall. Wall may also be constructed of nom 200 mm (7-7/8 in.) thick concrete blocks. Max diameter of opening is 128 mm (5 in.).
2. **Through Penetrant** - One nonmetallic pipe or conduit to be installed concentrically within the firestop system. The annular space between the pipe or conduit and the periphery of the opening shall be min 0 mm (0 in., point contact) to max 13 mm (1/2 in.). The pipe or conduit to be rigidly supported on both sides of floor or wall. The following types and sizes of pipes or conduits may be used:
  - A. **Fire Retardant Polypropylene (FRPP) Pipe** - Nom 102 mm (4 in.) diameter (or smaller), Schedule 40, solid core FRPP pipe.
  - B. **Acrylonitrile Butadiene Styrene (ABS) Pipe** - Nom 102 mm (4 in.) diameter (or smaller), Schedule 40, solid core ABS pipe.
  - C. **Polyvinyl Chloride (PVC) Pipe** - Nom 102 mm (4 in.) diam (or smaller) Schedule 40 solid core or cellular core PVC pipe for use in closed (process or supply) or vented (drain, waste or vent) piping system.
  - D. **Chlorinated Polyvinyl Chloride (CPVC) Pipe** - Nom 102 mm (4 in.) diam (or smaller) SDR13.5 CPVC pipe for use in closed (process or supply) piping systems.
  - E. **Rigid Nonmetallic Conduit++** - Nom 102 mm (4 in.) diam (or smaller) Schedule 40 PVC conduit installed in accordance with the National Electrical Code (NFPA No. 70).
  - F. **Polyvinylidene Fluoride (PVDF) Pipe** - Nom 102 mm (4 in.) diameter (or smaller), Schedule 40 pipe (When PVDF Pipe is used F, FT, FH & FTH Rating are 1-1/2 Hr).



**Specified Technologies Inc. 210 Evans Way Somerville, NJ 08876**

Reproduced courtesy of Underwriters Laboratories, Inc.

Created or Revised: May 29, 2008

(800)992-1180 • (908)526-8000 • FAX (908)231-8415 • E-Mail:techserv@stifirestop.com • Website:www.stifirestop.com



C-AJ-2063  
PAGE 1 OF 2

3. **Firestop System** - The firestop system shall consist of the following:

- A. **Fill, Void or Cavity Material\* - Sealant or Putty** - Min 13 mm (1/2 in.) depth of fill material installed flush with top surface of floor or both surfaces of wall.

**SPECIFIED TECHNOLOGIES INC** - SpecSeal LCI Sealant, SpecSeal Putty, SpecSeal 100, 101, 102, 120, 129, or 105 Sealant, Pensil 300 Sealant, or Pensil 300 SL Sealant (floors only)

- B. **Fill, Void or Cavity Material\* - Wrap Strip** - Nom 6 mm (1/4 in.) thick by 38 mm (1-1/2 in.) wide (RED), 4.8 mm (3/16 in.) by 51 mm (2 in.) wide (BLU) or 3.2 mm (1/8 in.) by 51 mm (2 in.) wide (BLU2) intumescent strips faced on both sides with a plastic film. Strips tightly wrapped around nonmetallic pipe with edges butted against the underside of the floor or both surfaces of the wall. The wrap strips may be installed with butted seams with butted seams in successive layers aligned or offset or continuously wrapped around through penetrant. Wrap strips are temporarily held in place with masking tape. The number of layers required depends upon the nom diam of the pipe: 1 layer for 51 mm (2 in.) diam (or smaller) pipe, 2 layers for 76 mm (3 in.) diam (or smaller) pipe, 3 layers for 102 mm (4 in.) diam pipe.

**SPECIFIED TECHNOLOGIES INC** - SpecSeal RED, BLU or BLU2 Wrap Strip

The max annular space is dependent upon the nom pipe diam and type of wrap strip being used as shown in the following table:

Wrap Strip	Nom Pipe Diam mm (in.)	Max Annular Space mm (in.)
RED	≤51 (2)	6 (1/4)
RED	>51 (2)	13 (1/2)
BLU	≤51 (2)	4.8 (3/16)
BLU	51 to 76 (2 to 3)	9.5 (3/8)
BLU	>76 (3)	13 (1/2)
BLU2	≤51 (2)	3 (1/8)
BLU2	>51 (2)	6 (1/4)

- C. **Steel Collar** - Nom 38 mm (1-1/2 in.) or 51 mm (2 in.) deep collar, dependent upon wrap strip width, with 25 mm (1 in.) wide by 51 mm (2 in.) long anchor tabs for attachment to concrete and min 19 mm (3/4 in.) wide retaining tabs tapering down to 6 mm (1/4 in.) wide and located opposite the anchor tabs. Steel collar, with anchor tabs bent outward 90 deg, wrapped tightly around wrap strip layers with min 25 mm (1 in.) overlap at seam. Retainer tabs to be bent 90 deg toward pipe to lock wrap strips in position. Anchor tabs to be pressed tightly against floor or wall surface(s), and collar to be secured in place with one 13 mm (1/2 in.) wide by (0.7 mm (0.028 in.) thick stainless steel hose clamp. As an alternate to the hose clamps on 38 mm (1-1/2 in.) and 51 mm (2 in.) deep collar, collar secured together by means of three No. 8 by 6 mm (1/4 in.) long steel screws. Collar to be secured to floor or wall surface(s) with 6 mm (1/4 in.) diam by min 32 mm (1-1/4 in.) long steel concrete screws in conjunction with min 25 mm (1 in.) diam steel fender washers. As an alternate to the steel concrete screws, nom 32 mm (1-1/4 in.) long steel powder actuated fasteners provided with 19 mm (3/4 in.) diam steel washers may be used to secure anchor tabs. The number of fasteners is dependent upon the nom diam of the through penetrant. Min two fasteners, symmetrically located, are required for nom 38 mm (1-1/2 in.) through 51 mm (2 in.) diam through penetrants. Min three fasteners, symmetrically located, are required for nom 64 mm (2-1/2 in.) through 102 mm (4 in.) diam through penetrants.

+Bearing the UL Listing Mark

\*Bearing the UL Classification Mark



**Specified Technologies Inc. 210 Evans Way Somerville, NJ 08876**

Reproduced courtesy of Underwriters Laboratories, Inc.

Created or Revised: May 29, 2008

(800)992-1180 • (908)526-8000 • FAX (908)231-8415 • E-Mail:techserv@stifirestop.com • Website:www.stifirestop.com



C-AJ-2063  
PAGE 2 OF 2