

System No. C-AJ-2064

F Rating - 2 Hr

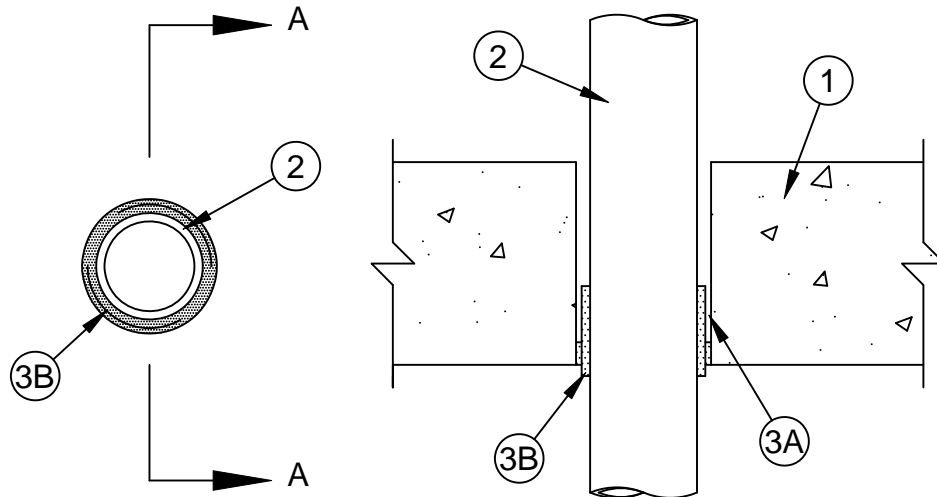
FT Rating - 2 Hr

FH Rating - 2 Hr

FTH Rating - 2 Hr

L Rating At Ambient - Less Than Less Than 5.1 L/s/m² (See Item 3C)

L Rating At 204 C - Less Than Less Than 5.1 L/s/m² (See Item 3C)



Section A-A

System tested with a pressure differential of 50 Pa between the exposed and the unexposed surfaces with the higher pressure on the exposed side.

- Floor or Wall Assembly** - Min 114 mm (4.5 in.) thick reinforced low-density or normal-density (1600-2400 kg/m³ or 100-150 pcf) concrete floor or wall. Wall may also be constructed of nom 200 mm (7-7/8 in.) thick concrete blocks. Max diameter of opening is 76 mm (3 in.).
- Through Penetrant** - One nonmetallic pipe or conduit to be installed concentrically within the firestop system. The annular space between the pipe or conduit and the periphery of the opening shall be min 6 mm (1/4 in.) to max 10 mm (3/8 in.). The pipe or conduit to be rigidly supported on both sides of floor or wall. The following types and sizes of pipes or conduits may be used:
 - Fire Retardant Polypropylene (FRPP) Pipe** - Nom 51 mm (2 in.) diameter (or smaller), Schedule 40, solid core FRPP pipe for use in closed (process or supply) or vented (drain, waste or vent) piping system.
 - Acrylonitrile Butadiene Styrene (ABS) Pipe** - Nom 51 mm (2 in.) diameter (or smaller), Schedule 40, solid core ABS pipe for use in closed (process or supply) or vented (drain, waste or vent) piping system.
 - Polyvinyl Chloride (PVC) Pipe** - Nom 51 mm (2 in.) diam (or smaller) Schedule 40 solid core or cellular core PVC pipe for use in closed (process or supply) or vented (drain, waste or vent) piping system.
 - Chlorinated Polyvinyl Chloride (CPVC) Pipe** - Nom 51 mm (2 in.) diam (or smaller) SDR13.5 CPVC pipe for use in closed (process or supply) piping systems.
 - Rigid Nonmetallic Conduit+** - Nom 51 mm (2 in.) diam (or smaller) Schedule 40 PVC conduit installed in accordance with the National Electrical Code (NFPA No. 70).
- Firestop System** - The firestop system shall consist of the following:
 - Fill, Void or Cavity Material* - Wrap Strip** - One layer of SpecSeal BLU or BLU2 Wrap Strip, installed around the pipe, secured with aluminum foil tape, and inserted into the annular space at the bottom of the floor or both sides of the wall such that the wrap strip projects 6 mm (1/4 in.) from the bottom of the floor or both sides of the wall.

SPECIFIED TECHNOLOGIES INC - SpecSeal BLU or BLU2 Wrap Strip



Specified Technologies Inc. 210 Evans Way Somerville, NJ 08876

Reproduced courtesy of Underwriters Laboratories, Inc.

Created or Revised: May 29, 2008

(800)992-1180 • (908)526-8000 • FAX (908)231-8415 • E-Mail:techserv@stifirestop.com • Website:www.stifirestop.com



C-AJ-2064
PAGE 1 OF 2

- B. **Fill, Void or Cavity Material* - Sealant** - Min 6 mm (1/4 in.) thickness of sealant, applied within the annulus between the outside diameter of the wrap strip and the concrete opening, flush with bottom surface of floor or both surfaces of wall.

SPECIFIED TECHNOLOGIES INC - SpecSeal Putty, SpecSeal LCI Sealant, SpecSeal 100, 101, 102, 120, 129, or 105 Sealant

- C. **Fill, Void or Cavity Material* - Sealant (Not Shown)** - To achieve L and W Ratings, a min 10 mm (3/8 in.) thickness of sealant shall be installed flush with the top surface of floor.

SPECIFIED TECHNOLOGIES INC - SpecSeal Putty, SpecSeal LCI Sealant, SpecSeal 100, 101, 102, 120, 129, or 105 Sealant, Pensil 300 Sealant or Pensil 300 SL Sealant (floors only)

*Bearing the UL Classification Mark

+Bearing the UL Listing Mark



Specified Technologies Inc. 210 Evans Way Somerville, NJ 08876

Reproduced courtesy of Underwriters Laboratories, Inc.
Created or Revised: May 29, 2008

(800)992-1180 • (908)526-8000 • FAX (908)231-8415 • E-Mail:techserv@stifirestop.com • Website:www.stifirestop.com



C-AJ-2064
PAGE 2 OF 2