

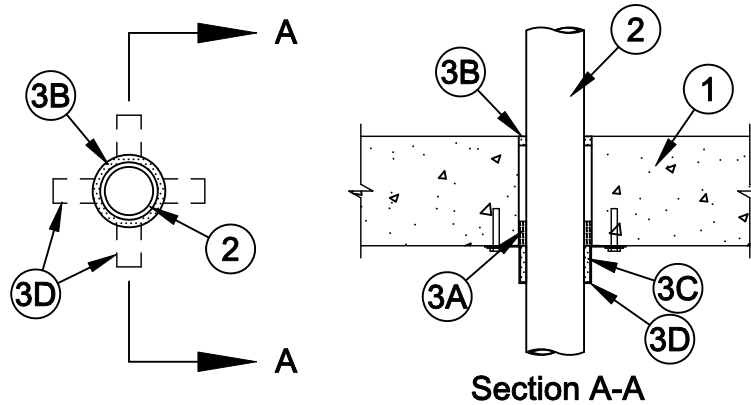


System No. C-AJ-2126

F Rating - 3 Hr

T Ratings - 1-1/2 & 2 Hr (See Item 2)

W Rating - Class 1 (See Item 3B)



1. **Floor or Wall Assembly** - Min 4-1/2 in. (114 mm) thick reinforced lightweight or normal weight (100-150 pcf or 1600-2400 kg/m³) concrete. Wall may also be constructed of any UL Classified **Concrete Blocks***. Max diam of opening is 3 in. (76 mm). See **Concrete Blocks** (CAZT) category in the Fire Resistance Directory for names of manufacturers.
2. **Through Penetrants** - One nonmetallic pipe or conduit to be centered within the firestop system. A nom annular space of 5/16 in. (8 mm) is required within the firestop system. The pipe or conduit to be rigidly supported on both sides of floor or wall. The following types and sizes of pipes or conduits may be used:
 - A. **Polyvinyl Chloride(PVC) Pipe** - Nom 2 in. (51 mm) diam (or smaller) Schedule 40 cellular or solid core PVC pipe for use in closed (process or supply) or vented (drain, waste, or vent) piping systems.
 - B. **Flame Retardant Polypropylene (FRPP) Pipe** - Nom 2 in. (51 mm) diam (or smaller) Schedule 40 FRPP pipe for use in closed (process or supply) or vented (drain, waste or vent) piping systems.
 - C. **Acrylonitrile Butadiene Styrene (ABS) Pipe** - Nom 2 in. (51 mm) diam (or smaller) Schedule 40 cellular or solid core ABS pipe for use in closed (process or supply) or vented (drain, waste or vent) piping systems.
 - D. **Chlorinated Polyvinyl Chloride (CPVC) Pipe** - Nom 2 in. (51 mm) diam (or smaller) SDR 13.5 CPVC pipe for use in closed (process or supply) piping systems.
 - E. **Rigid Nonmetallic Conduit+** - Nom 2 in. (51 mm) diam (or smaller) Schedule 40 PVC conduit installed in accordance with Article 347 of the National Electrical Code (NFPA No. 70).
3. **Firestop System** - The firestop system shall consist of the following:
 - A. **Packing Material** - Min 1 in. (25 mm) thickness of min 4 pcf (64 kg/m³) mineral wool batt insulation firmly packed into opening as a permanent form. Packing material to be installed flush with bottom surface of floor. In walls, packing material to be recessed from both surfaces of wall as required to accommodate the required thickness of fill material.
 - B. **Fill, Void or Cavity Material* - Caulk** - Min 3/8 in. (10 mm) thickness of fill material applied within the annulus, flush with top surface of floor or with both surfaces of wall.
SPECIFIED TECHNOLOGIES INC - SpecSeal Series SSS Sealant, SpecSeal LCI Sealant, Pensil 300 Sealant or SpecSeal Series SIL 300 Sealant for floors or walls and Pensil 300 S/L Sealant or SpecSeal Series SIL 300 SL Sealant for floors only.
W Rating applies only when Pensil 300, SpecSeal Series SIL 300, Pensil 300 S/L or SpecSeal Series SIL 300SL Sealants are used.
 - C. **Fill, Void or Cavity Material* - Wrap Strip** - Nom 1/4 in. (6 mm) thick intumescent material faced on both sides with a plastic film, supplied in 1-1/2 in. (38 mm) wide strips. Single layer of wrap strip is wrapped around the through-penetrant with the ends butted and held in place with masking tape. The edge of the wrap strips shall abut the surface of the concrete floor or wall. In floor assemblies, the wrap strips are installed on the bottom side of the concrete floor. In wall assemblies, the wrap strips are installed on each side of the concrete wall.



Specified Technologies Inc. 210 Evans Way Somerville, NJ 08876

Reproduced courtesy of Underwriters Laboratories, Inc.

Created or Revised: January 2, 2009

(800)992-1180 • (908)526-8000 • FAX (908)231-8415 • E-Mail:techserv@stifirestop.com • Website:www.stifirestop.com



C-AJ-2126
PAGE 1 OF 2

SPECIFIED TECHNOLOGIES INC - SpecSeal RED Wrap Strip

- D. **Steel Collar** - Collar fabricated from coils of precut 0.016 in. (0.4 mm) thick galv sheet steel available from wrap strip manufacturer. Collar shall be nom 1-1/2 in. (38 mm) deep with min four 1 in. (25 mm) wide by 2 in. (51 mm) long anchor tabs for securement to the concrete floor or wall. Retainer tabs, 3/4 in. (19 mm) wide tapering down to 1/4 in. (6 mm) wide and located opposite the anchor tabs, are folded 90 degree toward pipe surface to maintain the annular space around the pipe and to retain the wrap strips. Steel collar wrapped around wrap strips and pipe with a 1 in. (25 mm) wide overlap along its perimeter joint and secured together by means of min 1/2 in. (13 mm) wide by 0.028 in. (0.7 mm) thick stainless steel hose clamp may be installed at midheight of collar. Collar secured to concrete surface with 1/4 in. (6 mm) diam by min 1-1/4 in. (32 mm) long steel concrete screws in conjunction with min 1 in. (25 mm) diam steel fender washers. In floor assemblies, one collar is used on the bottom side of the concrete floor. In wall assemblies, a collar is used on each side the concrete wall.

+Bearing the UL Listing Mark

*Bearing the UL Classification Marking



Specified Technologies Inc. 210 Evans Way Somerville, NJ 08876

Reproduced courtesy of Underwriters Laboratories, Inc.

Created or Revised: January 2, 2009

(800)992-1180 • (908)526-8000 • FAX (908)231-8415 • E-Mail:techserv@stifirestop.com • Website:www.stifirestop.com



C-AJ-2126
PAGE 2 OF 2