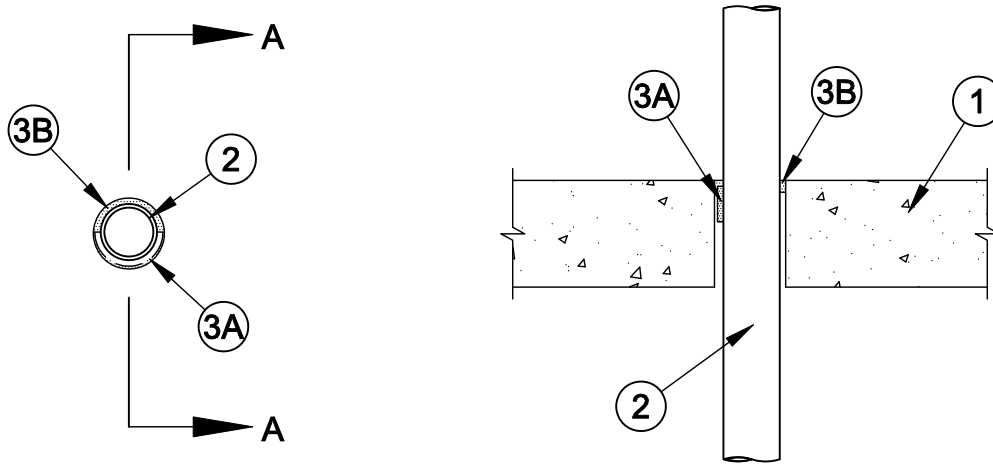




System No. C-AJ-2139

F Rating - 2 Hr

T Rating - 0 Hr



Section A-A

1. **Floor or Wall Assembly** - Min 4-1/2 in. thick reinforced lightweight or normal weight (100-150 pcf) concrete. Wall may also be constructed of any UL Classified **Concrete Blocks***. Max diam of opening is 3 in.

See **Concrete Blocks** (CAZT) category in the Fire Resistance Directory for names of manufacturers.

2. **Through Penetrants** - One nonmetallic pipe or conduit to be installed either concentrically or eccentrically within the firestop system. The annular space between the pipe or conduit and the periphery of the opening shall be a min of 1/4 in. to a max 3/8 in. The pipe or conduit to be rigidly supported on both sides of floor or wall. The following types and sizes of pipes or conduits may be used:

- A. **Polyvinyl Chloride (PVC) Pipe** - Nom 2 in. diam (or smaller) Schedule 40 cellular or solid core PVC pipe for use in closed (process or supply) or vented (drain, waste, or vent) piping systems.
- B. **Chlorinated Polyvinyl Chloride (CPVC) Pipe** - Nom 2 in. diam (or smaller) SDR 17 CPVC pipe for use in closed (process or supply) or vented (drain, waste or vent) piping systems.
- C. **Rigid Nonmetallic Conduit+** - Nom 2 in. diam (or smaller) Schedule 40 PVC conduit installed in accordance with Article 347 of the National Electrical Code, (NFPA No. 70).

3. **Firestop System** - The firestop system shall consist of the following:

- A. **Fill, Void or Cavity Material* - Wrap Strip** - Nom 1/4 in. thick intumescent material faced on both sides with a plastic film, supplied in 1-1/2 in. wide strips. One layer of wrap strip installed half way around outer circumference of the through penetrant and held in place with a layer of aluminum foil tape. The bottom edge of the wrap strip shall be recessed 2-3/4 in. above the bottom surface of the concrete floor. In walls, the wrap strip shall be installed on both surfaces of the wall such that the exposed edge of the wrap strip is recessed a 1/2 in. from each side of the wall.

SPECIFIED TECHNOLOGIES INC - SpecSeal RED Wrap Strip

- B. **Fill, Void or Cavity Material* - Sealant** - Min 1/2 in. thickness of fill material applied within the annulus, flush with top surface of floor or with both surfaces of wall.

SPECIFIED TECHNOLOGIES INC - SpecSeal Series SSS Sealant or SpecSeal LCI Sealant

*Bearing the UL Classification Marking

+Bearing the UL Listing Mark



Specified Technologies Inc. 210 Evans Way Somerville, NJ 08876

Reproduced courtesy of Underwriters Laboratories, Inc.

Created or Revised: January 2, 2009

(800)992-1180 • (908)526-8000 • FAX (908)231-8415 • E-Mail:techserv@stifirestop.com • Website:www.stifirestop.com



C-AJ-2139
PAGE 1 OF 1