



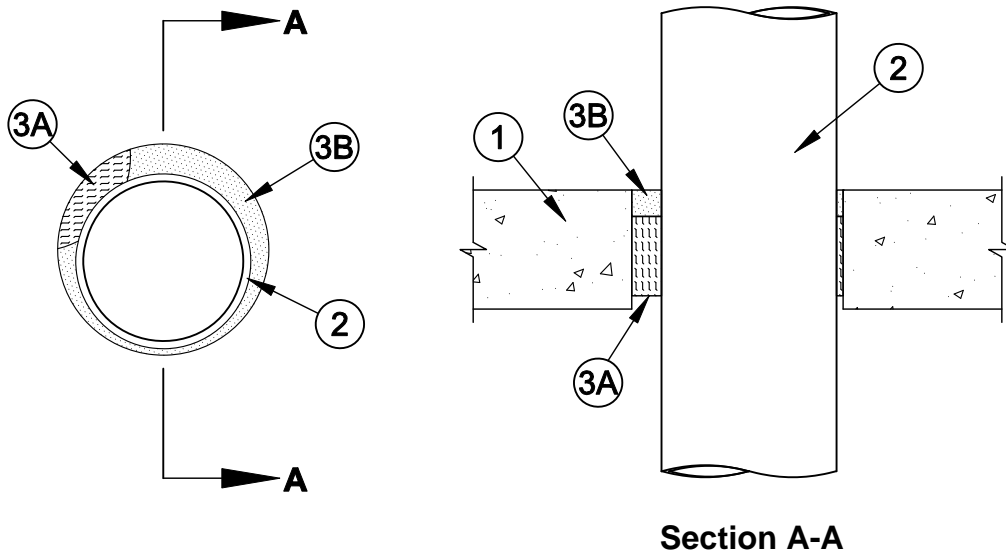
System No. C-AJ-2417

F Rating - 2 Hr

T Rating - 1/4 Hr

L Rating at Ambient-Less than 1 CFM/sq ft

L Rating at 400 F-Less than 1 CFM/sq ft



1. **Floor or Wall Assembly** - Min 4-1/2 in. thick reinforced lightweight or normal weight (100-150 pcf) concrete. Wall may also be constructed of any UL Classified **Concrete Blocks***. Max diam of opening is 8 in.

See **Concrete Blocks** (CAZT) category in the Fire Resistance Directory for names of manufacturers.

2. **Through Penetrant* - Glass Pipe** - Nom 6 in. diam (or smaller) glass pipe for use in closed (process or supply) or vented (drain, waste or vent) piping systems. One pipe to be installed eccentrically or concentrically within the firestop system. The annular space shall be min 1/4 in. to max 1-1/8 in. Pipe coupling to be located min 12 in. from floor or wall surfaces. Pipe to be rigidly supported on both sides of floor or wall assembly.

SCHOTT NORTH AMERICA INC

3. **Firestop System** - The firestop system shall consist of the following:

- A. **Packing Material** - Min 3-1/2 in. thickness of min 4 pcf mineral wool batt insulation firmly packed into opening. Packing material to be recessed from top surface of floor or from both surfaces of wall as required to accommodate the required thickness of fill material (Item 3B).
- B. **Fill, Void or Cavity Material* - Sealant** - Min 1 in. thickness of fill material applied within annulus between pipe and periphery of opening, flush with top surface of floor or both surfaces of wall.

SPECIFIED TECHNOLOGIES INC - SpecSeal Series SSS Sealant or SpecSeal LCI Sealant

*Bearing the UL Classification Mark



Specified Technologies Inc. 210 Evans Way Somerville, NJ 08876

Reproduced courtesy of Underwriters Laboratories, Inc.

Created or Revised: January 2, 2009

(800)992-1180 • (908)526-8000 • FAX (908)231-8415 • E-Mail:techserv@stifirestop.com • Website:www.stifirestop.com



C-AJ-2417
PAGE 1 OF 1