



System No. C-AJ-3023

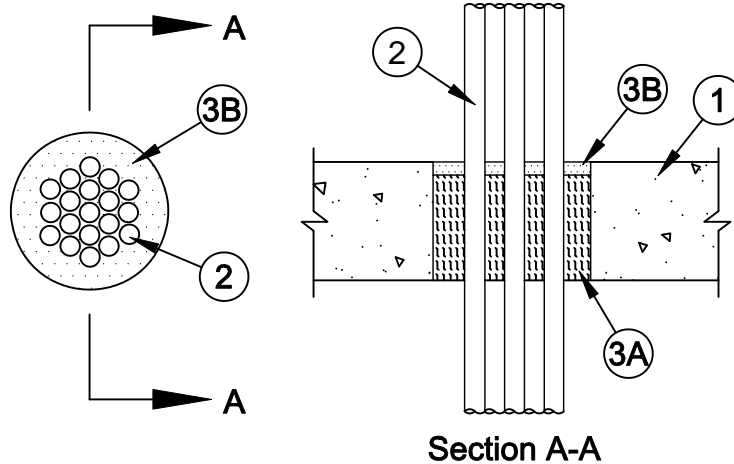
F Ratings - 2 and 3 Hr (See Items 2 and 3B)

T Rating - 1/2 Hr

L Rating At Ambient - 8 CFM/sq ft

L Rating At 400 F - Less Than 1 CFM/sq ft

W Rating - Class 1 (See Items 2 and 3B)



1. **Floor or Wall Assembly** - Min 4-1/2 in. (114 mm) thick reinforced lightweight or normal weight (100-150 pcf or 1600-2400 kg/m³) concrete floor or min 5 in. (127 mm) thick reinforced lightweight or normal weight concrete wall. Wall may also be constructed of any UL Classified **Concrete Blocks***. Max diam of opening is 6 in. (152 mm).

See **Concrete Blocks** (CAZT) category in the Fire Resistance Directory for names of manufacturers.

2. **Cables** - Aggregate cross-sectional area of cables in opening to be max 40 percent of the aggregate cross-sectional area of the opening. Cables to be rigidly supported on both sides of floor or wall assembly. W Rating applies only when the min separation between the individual cables is equal to or greater than 1/8 in. (3 mm). Any combination of the following types and sizes of copper conductor cables may be used:

A. Max seven conductor, No. 12 AWG cables with a polyvinyl chloride (PVC)-Nylon insulation and PVC jacket.

B. Max 300 pair No. 24 AWG cable with PVC insulation and jacket materials.

C. Single conductor max 750 kcmil cable with cross linked polyethylene insulation and PVC jacket materials.

F Rating is 3 hr for Item 2A. F Rating is 2 hr for Items 2B and 2C.

3. **Firestop System** - The firestop system shall consist of the following:

A. **Packing Material** - Min 4 in. (102 mm) thickness of min 4 pcf (64 kg/m³) mineral wool batt insulation firmly packed into opening as a permanent form. Packing material to be recessed from top surface of floor or from both surfaces of wall to accommodate the required thickness of fill material.

B. **Fill, Void or Cavity Material* - Caulk** - Min 1/2 in. (13 mm) thickness of fill material applied within the annulus, flush with top surface of floor or with both surfaces of wall. Caulk to be forced into interstices of cable group to max extent possible. **W Rating applies only when Pensil 300 or Pensil 300 S/L Sealant is used.**

MOMENTIVE PERFORMANCE MATERIALS - Pensil 100 Caulk for floors and walls.

SPECIFIED TECHNOLOGIES INC - Pensil 100 Sealant, Pensil 300 Sealant or SpecSeal Series SIL300 Sealant for floors and walls and Pensil 300 S/L Sealant or SpecSeal Series SIL300SL Sealant for floors only.

*Bearing the UL Classification Mark



Specified Technologies Inc. 210 Evans Way Somerville, NJ 08876

Reproduced courtesy of Underwriters Laboratories, Inc.

Created or Revised: November 26, 2008

(800)992-1180 • (908)526-8000 • FAX (908)231-8415 • E-Mail:techserv@stifirestop.com • Website:www.stifirestop.com



C-AJ-3023
PAGE 1 OF 1