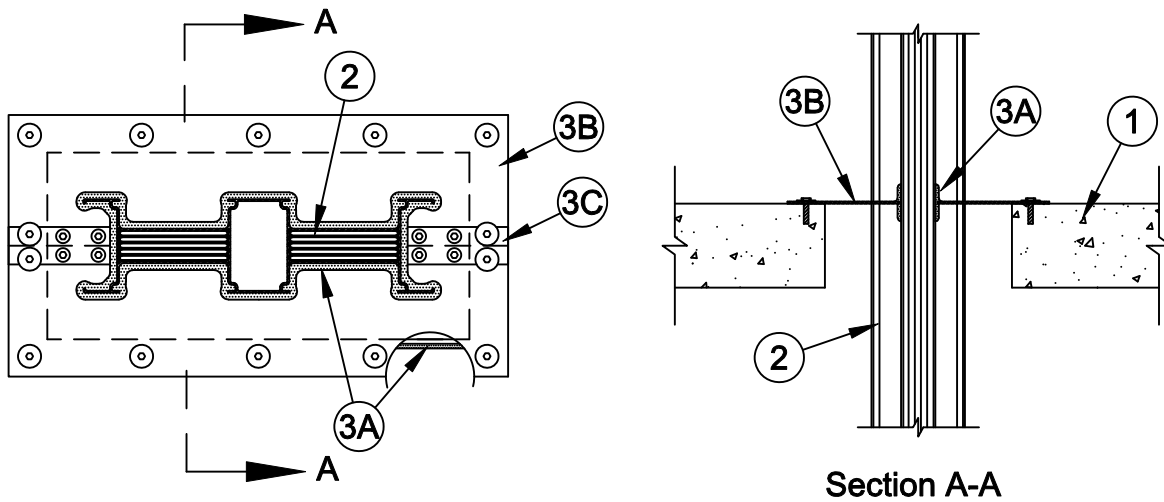




System No. C-AJ-6038

F Rating - 2 Hr

T Rating - 0 Hr



- Floor or Wall Assembly** - Min 4-1/2 in. (114 mm) thick lightweight or normal weight (100-150 pcf or 1600-2400 kg/m³) concrete. Wall may also be constructed of any UL Classified **Concrete Blocks***. The opening shall be sized to be min 1 in. (25 mm) to max 3 in. (76 mm) wider, longer and/or higher than the width and depth of the busway.

See **Concrete Blocks** (CAZT) category in the Fire Resistance Directory for names of manufacturers.

- Busway+** - Max 19 in. wide by 5 in. deep "I" shaped aluminum enclosure containing factory-mounted copper bars rated for 600 V, 5000 A or aluminum bars rated for 600 V, 4000 A. Busway to be rigidly supported on both sides of wall assembly. The busway shall bear the UL Listing Mark and shall be installed in accordance with all provisions of the National Electrical Code, NFPA 70.

- Firestop System** - The firestop shall consist of the following:

A. Fill, Void or Cavity Materials* - Putty or Sealant - Min 3/16 in. (5 mm) thick by 2 in. (51 mm) wide band of putty or sealant installed around entire periphery of penetrant. Putty or sealant band installed to project approx 1 in. (25 mm) beyond each face of the composite sheet (Item 3B) on top surface of floor or both sides of wall assembly. Nom 3/16 in. (5 mm) cove bead of putty or sealant applied around base of through penetrant at its egress from the intumescent sheet on top surface of floor or on both sides of the wall. Nom 3/16 in. (5 mm) wide by 3/16 in. (5 mm) thick putty strips or nom 1/4 in. (6 mm) diam bead of sealant positioned under composite sheet around entire perimeter of through opening on top surface of floor or on both sides of the wall.

SPECIFIED TECHNOLOGIES INC - SpecSeal Putty, SpecSeal 100, 101, 102, 120, 129 or 105 Sealant or SpecSeal LCI Sealant

B. Fill, Void or Cavity Materials*- Composite Sheet - Foil-faced sheet with galv steel sheet backer. Sheets may be installed as one solid sheet or cut in two pieces. Sheets cut to tightly follow the contour of the busway with an annular space equal to or less than 3/16 in. (5 mm). Sheets cut to lap min of 2 in. (51 mm) on floor or wall on all sides. Sheets to be installed on top surface of the floor or each side of wall with foil facing against floor or wall surface and secured with min 3/16 in. (5 mm) diam by 1-1/4 in. (32 mm) long steel concrete screws in conjunction with min 1-1/4 in. (32 mm) diam steel fender washers. Spacing of fasteners not to exceed 6 in. (152 mm) OC with additional fasteners located on each side of butted seams made to permit installation of the sheet around the busway.

SPECIFIED TECHNOLOGIES INC - SpecSeal CS Composite Sheet

C. Steel Cover Strip (Not Shown) - Min 2 in. (51 mm) wide strip of min 0.020 in. (0.51 mm) thick (26 gauge) galv steel centered over entire length of each butted seam made in the composite sheet (Item 4B). Prior to installation of the steel strip, the seam in the sheet shall be covered with a nom 1/8 by 1/2 in. (3.2 mm by 13 mm) ribbon of putty or a nom 1/4 in. (6 mm) diam bead of sealant (Item 4A). Steel cover strip secured to galv steel sheet backer of intumescent sheet with steel sheet metal screws or rivets spaced max 3 in. (76 mm) OC on each side of seam.

*Bearing the UL Classification Mark



Specified Technologies Inc. 210 Evans Way Somerville, NJ 08876

Reproduced courtesy of Underwriters Laboratories, Inc.

Created or Revised: June 3, 2005

(800)992-1180 • (908)526-8000 • FAX (908)231-8415 • E-Mail:techserv@stifirestop.com • Website:www.stifirestop.com



C-AJ-6038
PAGE 1 OF 1