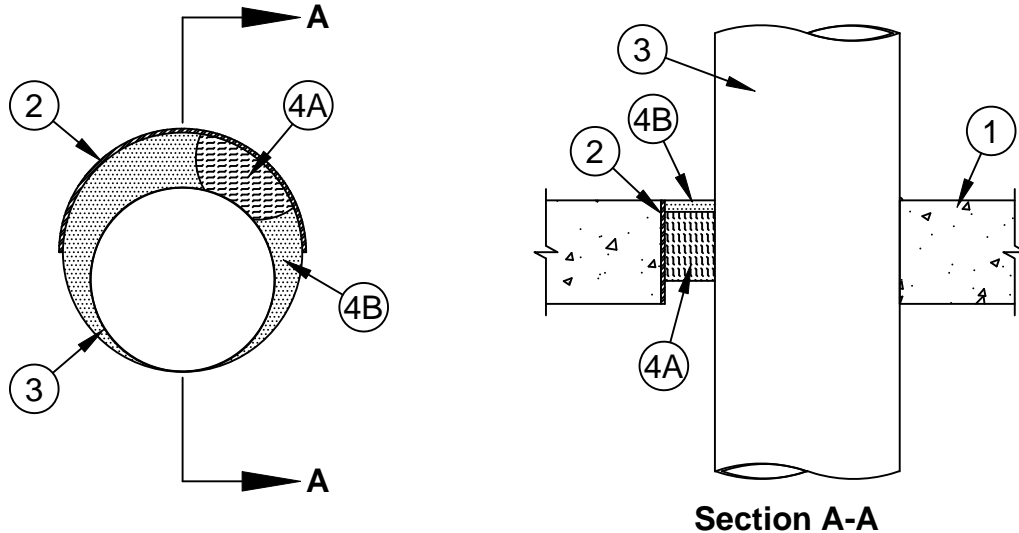


System No. C-AJ-7003

F Rating - 2 Hr
FT Rating - 1/4 Hr
FH Rating - 2 Hr
FTH Rating - 1/4 Hr



- 1. Floor Assembly** - Min 114 mm (4-1/2 in.) thick reinforced lightweight or normal weight (1600-2400 kg/m³ or 100-150 pcf) concrete floor. Floor may also be constructed of any min 152 mm (6 in.) thick hollow-core **Precast Concrete Units***. Wall may also be constructed of any UL Classified **Concrete Blocks***. Max diam of opening is 254 mm (10 in.). Max diam of opening in floors constructed of hollow-core concrete is 178 mm (7 in.).
See **Concrete Blocks (CAZT)** or **Precast Concrete Units (CFTV)** categories in the Fire Resistance Directory for names of manufacturers.
- 2. Steel Sleeve** - (Optional) - Nom 356 mm (14 in.) diam (or smaller) Schedule 10 (or heavier) steel pipe cast or grouted into floor or wall assembly. Steel sleeve may be installed flush or may project a max of 51 mm (2 in.) beyond the floor or wall surfaces.
- 3. Steel Duct** - One nom 305 mm (12 in.) diam (or smaller) galv steel duct. Steel gauge of duct shall conform with SMACNA requirements. Steel duct to be installed eccentrically or concentrically within the firestop system. The annular space between the steel duct and the periphery of the opening shall be min 0 mm (0 in., point contact) to max 51 mm (2 in.). Steel duct to be rigidly supported on both sides of the floor or wall assembly.
- 4. Firestop System** - The firestop system shall consist of the following:
 - A. Packing Material** - Min 76 mm (3 in.) thickness of min 64 kg/m³ (4 pcf) mineral wool batt insulation compressed and tightly packed into opening. Packing material recessed from top surface of floor or both surfaces of wall or precast concrete units to accommodate the required thickness of fill material. When steel sleeve projects from top of floor or from both sides of wall, the thickness of mineral wool batt packing material should be increased by an amount equal to the distance that the sleeve extends past the floor or wall surface.
 - B. Fill, Void or Cavity Material* - Sealant** - Min 13 mm (1/2 in.) thickness of fill material applied within annulus, flush with top surface of floor assembly or top edge of steel sleeve. In walls, min 13 mm (1/2 in.) thickness of fill material applied flush with both surfaces of wall assembly or both ends of steel sleeve. In floors constructed of hollow-core precast concrete units, fill material installed symmetrically on both sides of floor. At point contact location, min 6 mm (1/4 in.) diam bead of fill material installed at steel duct/concrete or steel duct/steel sleeve interface on top surface of floor or both surfaces of wall or precast concrete units.

SPECIFIED TECHNOLOGIES INC - SpecSeal LCI Sealant

*Bearing the UL Classification Mark



Specified Technologies Inc. 210 Evans Way Somerville, NJ 08876

Reproduced courtesy of Underwriters Laboratories, Inc.
Created or Revised: May 29, 2008

(800)992-1180 • (908)526-8000 • FAX (908)231-8415 • E-Mail:techserv@stifirestop.com • Website:www.stifirestop.com



C-AJ-7003
PAGE 1 OF 1