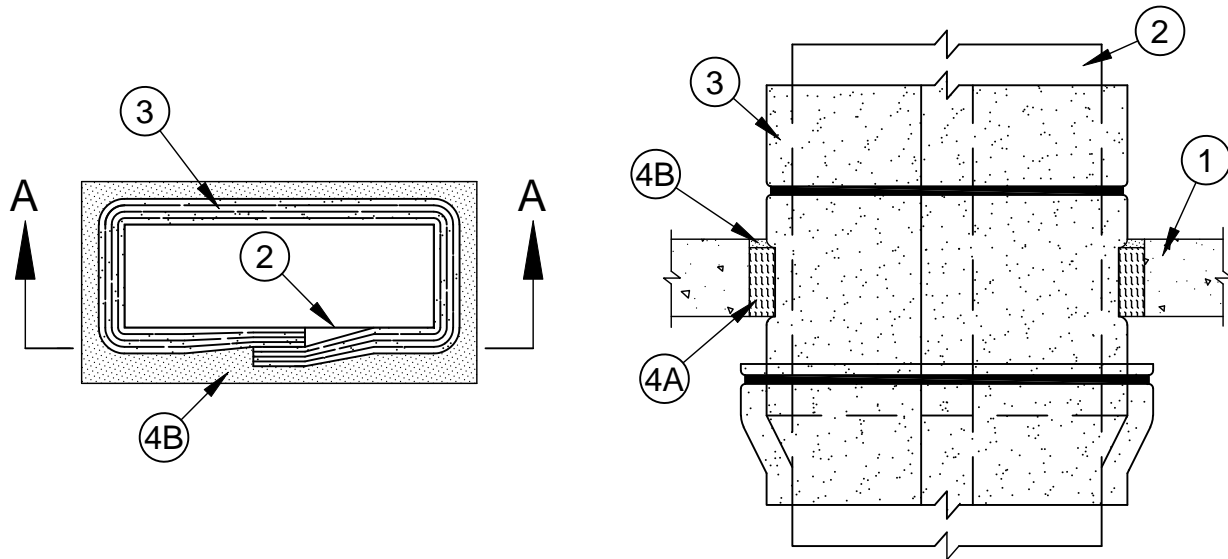




### System No. C-AJ-7047

F Ratings - 1 and 2 Hr (See Item 3)

T Ratings - 1 and 2 Hr (See Item 3)



### Section A-A

1. **Floor or Wall Assembly** - Min 4-1/2 in. (114 mm) thick reinforced lightweight or normal weight (100-150 pcf) concrete floor or min 5 in. (127 mm) thick reinforced lightweight or normal weight concrete wall. Wall may also be constructed of any UL Classified **Concrete Blocks\***. Max area of opening is 640 sq in. (413 sq. m) with max dimension of 32 in. (813 mm).  
See **Concrete Blocks\*** (CAZT) category in the Fire Resistance Directory for names of manufacturers.
2. **Through-Penetrant** - One nom 24 by 12 in. (610 by 305 mm) (or smaller) No. 16 gauge (or heavier) steel air or grease duct to be installed within the firestop system. Duct to be rigidly supported on both sides of floor or wall assembly.
3. **Duct Wrap Materials\*** - Any UL Classified duct wrap material Classified in accordance with HNKT for Grease Duct Assemblies or HNLJ for Ventilation Duct Assemblies, as listed below. The thickness, type, density, number of layers and installation sequence shall conform to the individual requirements outlined within the applicable grease duct or ventilation duct assembly system and shall be installed in accordance with the manufacturer's installation instructions provided with the product. The annular space between the insulated air duct or grease duct and the periphery of the opening shall be a min of 3/4 in. (19 mm) to a max of 1-1/4 in. (32 mm). **The F and T Ratings of the firestop system are dependent upon the hourly rating of the grease duct or ventilation duct assembly.**

**THERMAL CERAMICS INC** - FireMaster Duct Wrap, FireMaster Duct Wrap+, FireMaster FastWrap, FireMaster FastWrap XL, Pyroscat FP Duct Wrap, Pyroscat Duct Wrap XL, Pyroscat FP FastR Duct Wrap or Pyroscat CSM FastR Duct Wrap

**UNIFRAX I L L C** - FyreWrap Duct Insulation , FIRESTOP BLANKET, FLAMESHIELD or FSB Duct Insulation

4. **Firestop System** - The firestop system shall consist of the following:
  - A. **Packing Material** - Min 4 in. (102 mm) thickness of unfaced scrap duct wrap material or min 3 pcf mineral wool batt insulation firmly packed into the opening as a permanent form. The annular space between insulated duct and the periphery of opening after packing shall be a min of 1-1/4 ( 32 mm) to a max of 1-3/4 in. (45 mm). Packing material to be recessed from top surface of floor or from both surfaces of wall as required to accommodate the required thickness of fill material (Item 4B).
  - B. **Fill, Void or Cavity Material\* - Sealant** - Min 1/2 in. (13 mm) thickness of sealant applied within annulus, flush with top surface of floor and with both surfaces of wall.

**SPECIFIED TECHNOLOGIES INC** - SpecSeal 100, 101, 102, 105 or 120 Sealant

\*Bearing the UL Classification Mark



**Specified Technologies Inc. 210 Evans Way Somerville, NJ 08876**

Reproduced courtesy of Underwriters Laboratories, Inc.

Created or Revised: January 2, 2009

(800)992-1180 • (908)526-8000 • FAX (908)231-8415 • E-Mail:techserv@stifirestop.com • Website:www.stifirestop.com



C-AJ-7047  
PAGE 1 OF 1