

System No. F-A-1063

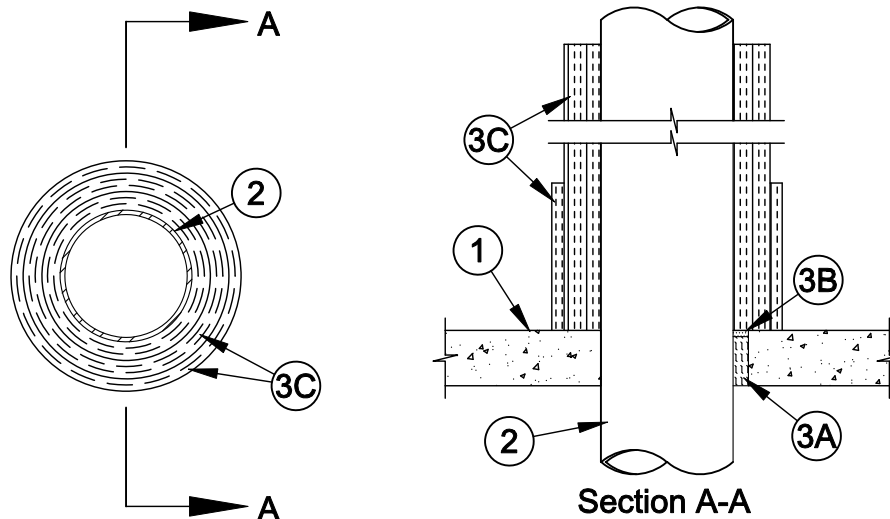
F Rating - 2 Hr

T Rating - 1 Hr

L Rating At Ambient - Less Than 1 CFM/sq ft

L Rating At 400°F - Less Than 1 CFM/sq ft

W Rating - Class 1 (See Item 3B)



1. **Floor Assembly** - Min 4-1/2 in. (114 mm) thick reinforced lightweight or normal weight (100-150 pcf or 1600-2400 kg/m³) concrete. Max diam of opening is 12 in. (305 mm).
See **Concrete Blocks** (CAZT) in Volume 1 of the Fire Resistance Directory for names of manufacturers.
2. **Through-Penetrant** - One metallic pipe or tube installed concentrically or eccentrically within opening. Annular space between penetrant and periphery of opening shall be min 0 in. (0 mm, point contact) to max 2 in. (51 mm). Penetrant to be rigidly supported on both sides of floor assembly. The following types and sizes of penetrants may be used:
 - A. **Steel Pipe** - Nom 10 in. (254 mm) diam (or smaller) Schedule 10 (or heavier) steel pipe.
 - B. **Iron Pipe** - Nom 10 in. (254 mm) diam (or smaller) cast or ductile iron pipe.
 - C. **Copper Tubing** - Nom 4 in. (102 mm) diam (or smaller) Type L (or heavier) copper tubing.
 - D. **Copper Pipe** - Nom 4 in. (102 mm) diam (or smaller) Regular (or heavier) copper pipe.
3. **Firestop System** - The details of the firestop system shall be as follows:
 - A. **Packing Material** - Min 4 in. (102 mm) thickness of min 4 pcf (64 kg/m³) mineral wool batt insulation firmly packed into opening as a permanent form. Packing material to be recessed from top surface of floor to accommodate the required thickness of fill material.
 - B. **Fill, Void or Cavity Materials* - Sealant or Putty** - Min 1/2 in. (13 mm) thickness of sealant or putty applied within the annulus, flush with top surface of floor. Min 1/4 in. (6 mm) diam bead of fill material applied at metal pipe, conduit or tube/concrete interface on top surface of floor.
SPECIFIED TECHNOLOGIES INC - SpecSeal 100, 101, 102, 105, 120 or 129 Sealant, SpecSeal LCI Sealant, SpecSeal Putty, Pensil 300 Sealant, or SpecSeal Series SIL300 Sealant for floors or walls and Pensil 300 S/L Sealant or SpecSeal Series SIL300SL Sealant for floors only.
W Rating applies only when Pensil 300 Sealant, SpecSeal Series SIL300, Pensil 300 S/L or SpecSeal Series SIL300SL Sealants are used.
 - C. **Pipe Covering Materials*** - Nom 3 in. (76 mm) thick unfaced mineral fiber pipe insulation sized to the outside diam of pipe or tube installed around penetrant to extend 36 in. (914 mm) above top surface of floor. An additional layer of 1 in. (25 mm) thick unfaced mineral fiber pipe insulation installed around the first layer of pipe insulation to extend 12 in. (305 mm) above top surface of floor. Pipe insulation secured with 16 AWG steel wire located 3 in. (76 mm) above floor and spaced max 6 in. (152 mm) OC.
IIG MINWOOL L L C - 1200 Series Pipe Insulation
*Bearing the UL Classification Mark



Specified Technologies Inc. 210 Evans Way Somerville, NJ 08876

Reproduced courtesy of Underwriters Laboratories, Inc.

Created or Revised: November 26, 2008

(800)992-1180 • (908)526-8000 • FAX (908)231-8415 • E-Mail:techserv@stifirestop.com • Website:www.stifirestop.com



F-A-1063
PAGE 1 OF 1