



System No. F-A-1068

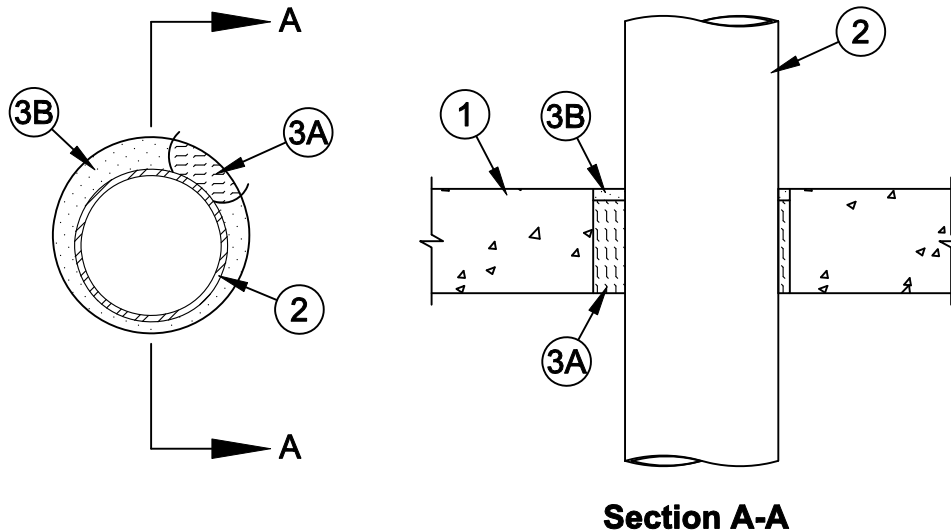
F Rating - 2 Hr

T Rating - 0 Hr

L Rating At Ambient - Less Than 1 CFM/sq ft

L Rating At 400 F - Less Than 1 CFM/sq ft

W Rating - Class 1 (See Item 2)



Section A-A

1. **Floor Assembly** - Min 4-1/2 in. (114 mm) thick reinforced lightweight or normal weight (100-150 pcf or 1600-2400 kg/m³) concrete floor. Max diam of opening is 10 in. (356 mm).
2. **Metallic Penetrant** - One metallic pipe, conduit, or tubing installed concentrically or eccentrically within the firestop system. The annular space shall be min 1/2 in. (13 mm) to max 2 in. (51 mm). Metallic pipe, conduit, or tubing to be rigidly supported on both sides of the floor assembly. One of the following types and sizes of metallic pipe, conduit, or tubing may be used:
 - A. **Steel Pipe** - Nom 8 in. (203 mm) diam (or smaller) Schedule 10 (or heavier) steel pipe. **Class 1 W Rating applies when steel pipe is used.**
 - B. **Iron Pipe** - Nom 8 in. (305 mm) diam (or smaller) cast or ductile iron pipe. **Class 1 W Rating applies when iron pipe is used.**
 - C. **Conduit** - Nom 6 in. (152 mm) diam (or smaller) rigid steel conduit, nom 4 in. (102 mm) diam (or smaller) steel electrical metallic tubing (EMT), or nom 1 in. (25 mm) diam (or smaller) flexible steel conduit. **Class 1 W Rating applies when rigid steel conduit or EMT is used.**
 - D. **Copper Pipe or Tubing** - Nom 4 in. (102 mm) diam (or smaller) Regular copper pipe or Type L (or heavier) copper tubing.
3. **Firestop System** - The firestop system shall consist of the following items:
 - A. **Packing Material** - Mineral wool batt insulation, nom 4 pcf (64 kg/m³), tightly-packed to min 4 in. (102 mm) depth. Packing material recessed from top surface of floor or top edge of steel sleeve as required to accommodate fill material (Item 4B).
 - B. **Fill, Void, or Cavity Material* - Sealant** - Min 1/2 in. (13 mm) thickness of fill material applied within the annulus, flush with top surface of floor.

SPECIFIED TECHNOLOGIES INC - SpecSeal Fast Tack Firestop Spray

*Bearing the UL Classification Mark



Specified Technologies Inc. 210 Evans Way Somerville, NJ 08876

Reproduced courtesy of Underwriters Laboratories, Inc.

Created or Revised: September 7, 2005

(800)992-1180 • (908)526-8000 • FAX (908)231-8415 • E-Mail:techserv@stifirestop.com • Website:www.stifirestop.com



F-A-1068
PAGE 1 OF 1