



System No. F-A-1110

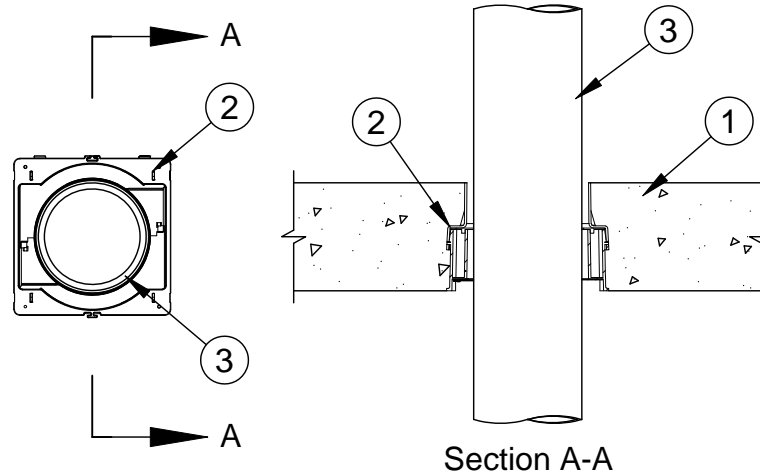
F Rating - 3 Hr

T Ratings - 1/4 and 1 Hr (See Item 2)

L Rating At Ambient - Less Than 1 CFM/sq ft (See Items 3, 4 and 6)

L Rating At 400 F - Less Than 1 CFM/sq ft (See Items 3, 4 and 6)

W Rating - Class 1 (See Item 6)



1. **Floor Assembly** - Min 4-1/2 in. (114 mm) thick reinforced lightweight or normal weight (100-150 pcf or 1600-2400 kg/m³) concrete floor.
 - 1A. **Floor Assembly** - (Not Shown) - As an alternate to Item 1, the fire rated unprotected concrete and steel floor assembly shall be constructed of the material and in the manner specified in the individual D900 Series designs in the UL Fire Resistance Directory and as summarized below:
 - A. **Concrete** - Min 4-1/2 in. (114 mm) thick reinforced lightweight or normal weight (100-150 pcf or 1600-2400 kg/m³) concrete topping, as measured from the top plane of the steel floor units.
 - B. **Steel Floor and Form Units*** - Composite or non-composite max 3 in. (76 mm) deep galv steel fluted units as specified in the individual Floor-Ceiling Design.
 2. **Firestop Device*** - Cast in place firestop device permanently embedded during the concrete pour or grouted into the concrete assembly in accordance with the accompanying installation instructions. The throat of the firestop device may be cut flush with the top surface of the floor or extend beyond the top surface of the floor. **When throat of firestop device extends less than 3 in. (76 mm) above top of floor, T Rating is 1/4 hr. When throat of firestop device extends min 3 in. (76 mm) above top of floor, T Rating is 1 hr.**
SPECIFIED TECHNOLOGIES INC - SpecSeal CD200, CD200M, CD300, CD300M, CD400, CD400M CD600, or CD600M Cast In Firestop Device.
 - 2A. **Firestop Device*** - (Not Shown) - When Item 1A is used, a steel deck adapter kit consisting of steel plates and a nonmetallic extension tube shall be used in conjunction with Item 2. The deck adapter shall be installed in accordance with the accompanying installation instructions.
SPECIFIED TECHNOLOGIES INC - SpecSeal CD200DK, CD300DK, CD400DK or CD600DK Cast In Firestop Device Deck Adapter
 - 2B. **Firestop Device*** - (Not Shown) - When the concrete floor slab or concrete topping thickness over steel deck exceeds 8 in. (203 mm), a nonmetallic extension tube shall be used in conjunction with Item 2. The extension tube shall be installed in accordance with the accompanying installation instructions. The extension tube may be cut flush with the top surface of the floor or extend beyond the top surface of the floor.
SPECIFIED TECHNOLOGIES INC - SpecSeal CD200X, CD300X, CD400X or CD600X Cast In Firestop Device Extension



Specified Technologies Inc. 210 Evans Way Somerville, NJ 08876

Reproduced courtesy of Underwriters Laboratories, Inc.

Created or Revised: February 17, 2010

(800)992-1180 • (908)526-8000 • FAX (908)231-8415 • E-Mail:techserv@stifirestop.com • Website:www.stifirestop.com



F-A-1110
PAGE 1 OF 2

3. **Through Penetrant** - One metallic pipe, tube or conduit to be centered within the firestop system. Pipe, conduit or tube to be rigidly supported on both sides of the floor assembly. The following types and sizes of through penetrant may be used:
- A. **Steel Pipe** - Nom 6 in. (152 mm) diam (or smaller) Schedule 10 (or heavier) steel pipe.
 - B. **Iron Pipe** - Nom 6 in. (152 mm) diam (or smaller) cast or ductile iron pipe.
 - C. **Conduit** - Nom 6 in. (152 mm) rigid steel conduit or steel electrical metallic tubing (EMT).
 - D. **Copper Pipe or Tubing** - Nom 4 in. (102 mm) diam (or smaller) Type M (or heavier) copper tubing or Regular (or heavier) copper pipe.

Nom Pipe Diam+	Firestop Device
1-1/2 or 2 in. (38 or 51 mm)	CD200, CD200M
2-1/2 or 3 in. (64 or 76 mm)	CD300, CD300M
3-1/2 or 4 in. (89 or 102 mm)	CD400, CD400M
6 in. (152 mm)	CD600, CD600M

+When metallic pipe, conduit, or tubing with diam smaller than those shown in the table above are used, packing material and/or fill material shall be installed into the device as described in Items 4 and 5. L Ratings for these penetrants only apply when the fill material is used. Otherwise, the L Rating for each firestop device is less than 1 cfm at ambient and 400F.

4. **Packing Material** - (Not Shown) - When required under Item 3, min 4 in. (102 mm) thickness of min 4 pcf (64 kg/m³) mineral wool firmly packed into device flush with top edge of device (Item 2). When W or L Ratings for penetrants with a diam smaller than those shown in the table above are required, recess mineral wool 1/4 in. (6 mm) from top edge of device to accommodate sealant (Item 6).
5. **Fill, Void, or Cavity Material* - Putty** - (Not Shown) - When required under Item 3, as an option to Item 4, min 1 in. (25 mm) depth of fill material applied to fill annulus between penetrant and throat of firestop device at top of floor.

SPECIFIED TECHNOLOGIES INC - SpecSeal Putty

6. **Fill, Void, or Cavity Material*** - (Optional, Not Shown) - To achieve W or L Ratings for penetrants with a diam smaller than those shown in the table of Item 3, apply min 1/4 in. (6 mm) depth of sealant atop packing material (Item 4) flush with top edge of device.

SPECIFIED TECHNOLOGIES INC - Pensil 300 Silicone Sealant. Pensil 300SL Silicone Sealant, SpecSeal Series SIL 300 Sealant or SpecSeal SIL 300SL

*Bearing the UL Classification Mark

+Bearing the UL Listing Mark



Specified Technologies Inc. 210 Evans Way Somerville, NJ 08876

Reproduced courtesy of Underwriters Laboratories, Inc.
Created or Revised: February 17, 2010

(800)992-1180 • (908)526-8000 • FAX (908)231-8415 • E-Mail:techserv@stifirestop.com • Website:www.stifirestop.com



F-A-1110
PAGE 2 OF 2