



## System No. F-A-2192

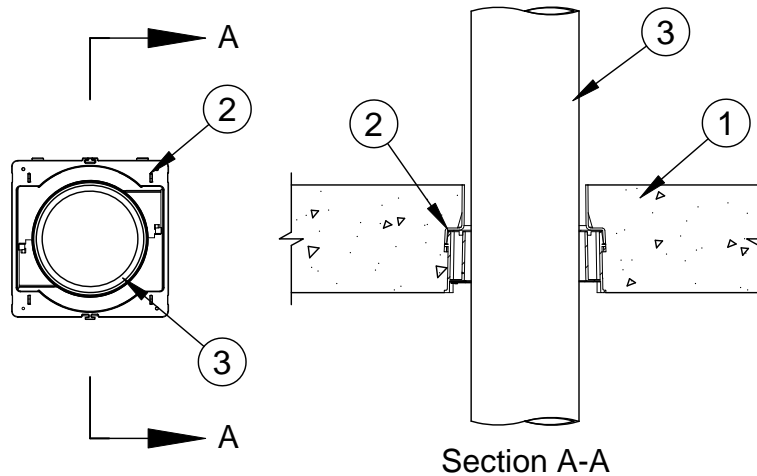
F Rating - 3 Hr

T Ratings - 0 and 3 Hr (See Item 3)

L Rating At Ambient - Less Than 1 CFM/sq ft (See Items 3 and 6)

L Rating At 400 F - Less Than 1 CFM/sq ft (See Items 3 and 6)

W Rating - Class 1 (See Item 6)



1. **Floor Assembly** - Min 4-1/2 in. (114 mm) thick reinforced lightweight or normal weight (100-150 pcf or 1600-2400 kg/m<sup>3</sup>) concrete floor.
- 1A. **Floor Assembly** - (Not Shown) - As an alternate to Item 1, the fire rated unprotected concrete and steel floor assembly shall be constructed of the material and in the manner specified in the individual D900 Series designs in the UL Fire Resistance Directory and as summarized below:
  - A. **Concrete** - Min 4-1/2 in. (114 mm) thick reinforced lightweight or normal weight (100-150 pcf or 1600-2400 kg/m<sup>3</sup>) concrete floor.
  - B. **Steel Floor and Form Units\*** - Composite or non-composite max 3 in. (76 mm) deep galv steel fluted units as specified in the individual Floor-Ceiling Design.
2. **Firestop Device\*** - Cast in place firestop device permanently embedded during the concrete pour or grouted into the concrete assembly in accordance with the accompanying installation instructions. The devices may be cut flush or extend above the top surface of the floor.

**SPECIFIED TECHNOLOGIES INC** - SpecSeal CD200, CD300, CD400 or CD600 Cast In Firestop Device
- 2A. **Firestop Device\*** - (Not Shown) - When Item 1A is used, a steel deck adapter kit consisting of steel plates and a nonmetallic extension tube is used in conjunction with Item 2. Install the deck adapter in accordance with the accompanying installation instructions.

**SPECIFIED TECHNOLOGIES INC** - SpecSeal CD200DK, CD300DK, CD400DK or CD600DK Cast In Firestop Device Deck Adapter
- 2B. **Firestop Device\*** - (Not Shown) - When the concrete thickness exceeds 8 in. (203 mm), a nonmetallic extension tube is used in conjunction with Item 2. Install the extension tube in accordance with the accompanying installation instructions.

**SPECIFIED TECHNOLOGIES INC** - SpecSeal CD200X, CD300X, CD400X or CD600X Cast In Firestop Device Extension



**Specified Technologies Inc. 210 Evans Way Somerville, NJ 08876**

Reproduced courtesy of Underwriters Laboratories, Inc.

Created or Revised: February 17, 2010

(800)992-1180 • (908)526-8000 • FAX (908)231-8415 • E-Mail:techserv@stifirestop.com • Website:www.stifirestop.com



F-A-2192  
PAGE 1 OF 2

3. **Through Penetrants** - One nonmetallic pipe or conduit to be installed within the firestop system. Pipe or conduit to be rigidly supported on both sides of the floor assembly. The following types and sizes of the nonmetallic pipes or conduits may be used:
- A. **Polyvinyl Chloride (PVC) Pipe** - Nom 6 in. (152 mm) diam (or smaller) solid or cellular core Schedule 40 polyvinyl chloride (PVC) pipe for use in closed (process or supply) or vented (drain, waste or vent) piping systems. **When PVC pipe is used, T Rating is 3 hr.**
  - B. **Chlorinated Polyvinyl Chloride (CPVC) Pipe** - Nom 6 in. (152 mm) diam (or smaller) SDR 13.5 chlorinated polyvinyl chloride (CPVC) pipe for use in closed (process or supply) piping systems. **When CPVC pipe is used, T Rating is 3 hr.**
  - C. **Rigid Nonmetallic Conduit+** - Nom 6 in. (152 mm) diam (or smaller) Schedule 40 PVC conduit installed in accordance with the National Electrical Code (NFPA 70). **When PVC conduit is used, T Rating is 3 hr.**
  - D. **Acrylonitrile Butadiene Styrene (ABS) Pipe** - Nom 4 in. (102 mm) diam (or smaller) solid or cellular core Schedule 40 acrylonitrile butadiene styrene (ABS) pipe for use in closed (process or supply) or vented (drain, waste or vent) piping systems. **When ABS pipe is used, T Rating is 3 hr.**
  - E. **Fire Retardant Polypropylene (FRPP) Pipe** - Nom 4 in. (102 mm) diam (or smaller) solid or cellular core Schedule 40 fire retardant polypropylene (FRPP) pipe for use in closed (process or supply) or vented (drain, waste or vent) piping systems. **When FRPP pipe is used, T Rating is 0 hr.**

Nom Pipe Diam+	Firestop Device
1-1/2 or 2 in. (38 or 51 mm )	CD200
2-1/2 or 3 in. (64 or 76 mm )	CD300
3-1/2 or 4 in. (89 or 102 mm )	CD400
6 in. (152 mm )	CD600

**+When metallic pipe, conduit or tubing with diam smaller than those shown in the table above is used, packing material and/or fill material shall be installed into the device as described in Items 4 and 5. L Ratings for these penetrants only apply when the fill material is used. Otherwise, the L Rating for each firestop device is less than 1 cfm at ambient and at 400F.**

- 4. **Packing Material** - (Not Shown) - When required under Item 3, min 4 in. (102 mm) thickness of min 4 pcf (64 kg/m<sup>3</sup>) mineral wool firmly packed into device flush with top edge of device (Item 2). When W Ratings are required, recess mineral wool 1/4 in. (6 mm) from top edge of device to accommodate sealant (Item 6).
- 5. **Fill, Void, or Cavity Material\* - Putty** - (Not Shown) - When required under Item 3, as an option to Item 4, min 1 in. (25 mm) depth of fill material applied within device flush with top edge of device (Item 2).

**SPECIFIED TECHNOLOGIES INC** - SpecSeal Putty

- 6. **Fill, Void, or Cavity Material\*** - (Optional, Not Shown) - To achieve W or L Ratings for penetrants with a diam smaller than those shown in the table above, apply min 1/4 in. (6 mm) depth of sealant atop packing material (Item 4) flush with top edge of device.

**SPECIFIED TECHNOLOGIES INC** - Pensil 300 Silicone Sealant. Pensil 300SL Silicone Sealant, SpecSeal Series SIL 300 Sealant or SpecSeal SIL 300SL Sealant

\*Bearing the UL Classification Mark

+Bearing the UL Listing Mark



**Specified Technologies Inc. 210 Evans Way Somerville, NJ 08876**

Reproduced courtesy of Underwriters Laboratories, Inc.

Created or Revised: February 17, 2010

(800)992-1180 • (908)526-8000 • FAX (908)231-8415 • E-Mail:techserv@stifirestop.com • Website:www.stifirestop.com



F-A-2192  
PAGE 2 OF 2