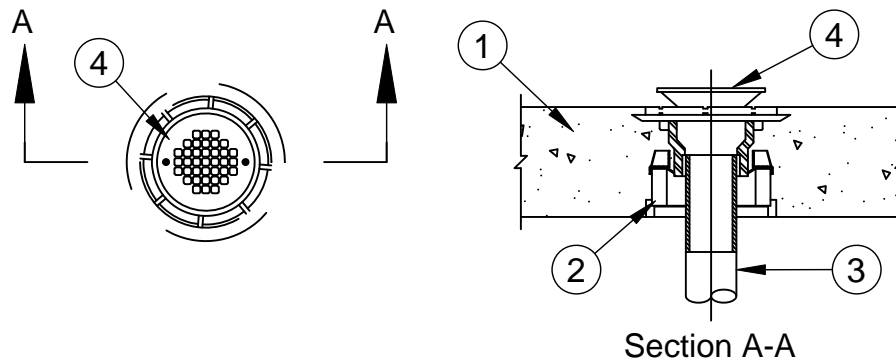




## System No. F-A-2193

F Rating - 3 Hr

T Rating - 0 Hr



1. **Floor Assembly** - Lightweight or normal weight (100-150 pcf or 1600-2400 kg/m<sup>3</sup>) concrete floor assembly. Min concrete thickness is 4-1/2 in. (114 mm).
- 1A. **Floor Assembly** - (Not Shown) - As an alternate to Item 1, the fire rated unprotected concrete and steel floor assembly shall be constructed of the material and in the manner specified in the individual D900 Series designs in the UL Fire Resistance Directory and as summarized below:
  - A. **Concrete** - Min 4-1/2 in. (114 mm) thick reinforced lightweight or normal weight (100-150 pcf or 1600-2400 kg/m<sup>3</sup>) concrete. Min concrete thickness is 4-1/2 in. (114 mm).
  - B. **Steel Floor and Form Units\*** - Composite or non-composite max 3 in. (76 mm) deep galv steel fluted units as specified in the individual Floor-Ceiling Design.
2. **Firestop System - Firestop Device\*** - Cast in place firestop device permanently embedded during concrete placement or grouted in concrete assembly in accordance with accompanying installation instructions.

### SPECIFIED TECHNOLOGIES INC - CD200

- 2A. **Firestop Device\*** - (Not Shown) - When Item 1A is used, a steel deck adapter kit consisting of steel plates and a nonmetallic extension tube is used in conjunction with Item 2. Install the deck adapter in accordance with the accompanying installation instructions.

### SPECIFIED TECHNOLOGIES INC - CD200DK

- 2B. **Firestop Device\*** - (Not Shown) - When the concrete thickness exceeds 8 in. (203 mm), a nonmetallic extension tube is used in conjunction with Item 2. Install the extension tube in accordance with the accompanying installation instructions.

### SPECIFIED TECHNOLOGIES INC - CD200X, CD300X, or CD400X

3. **Drain Piping** - Nom 2 in. (51 mm) diam Schedule 40 cellular or solid core polyvinyl chloride (PVC) pipe.
4. **Shower Drain Fitting** - Polyvinyl chloride (PVC) shower fitting with chromed steel shower drain or floor drain strainer sized to accommodate drain pipe. PVC body cemented to nonmetallic drain pipe (Item 3).

\*Bearing the UL Classification Mark



**Specified Technologies Inc. 210 Evans Way Somerville, NJ 08876**

Reproduced courtesy of Underwriters Laboratories, Inc.

Created or Revised: January 15, 2009

(800)992-1180 • (908)526-8000 • FAX (908)231-8415 • E-Mail:techserv@stifirestop.com • Website:www.stifirestop.com



F-A-2193  
PAGE 1 OF 1