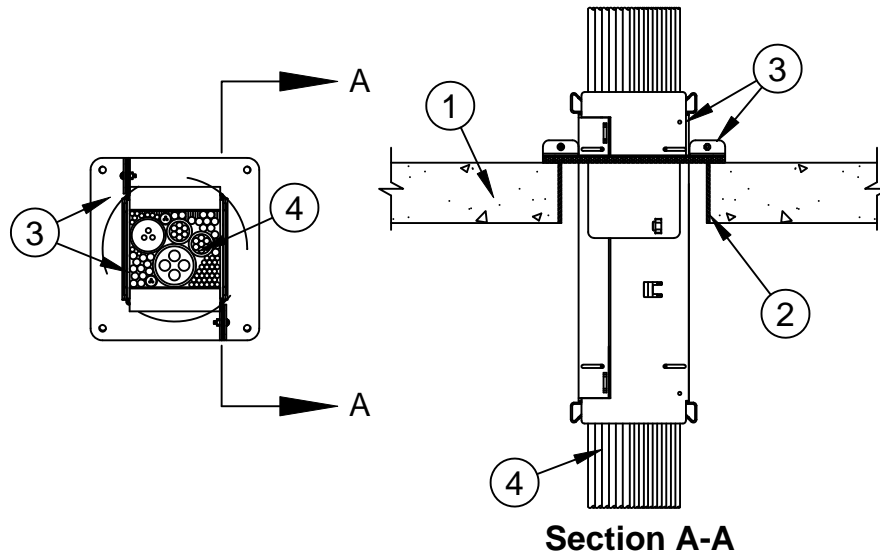




System No. F-A-3054

F Ratings - 2, 3 and 4 Hr (See Items 1 and 4)
T Ratings - 0 and 1/2 Hr (See Item 4)



1. **Floor Assembly** - Min 2-1/2 in (64 mm) thick reinforced lightweight or normal weight (100-150 pcf or 1600-2400 kg/m³) concrete floor. Min 4-1/2 in. (114 mm) floor thickness required for 3 and 4 Hr F Ratings. Floor may also be constructed of any UL Classified hollow-core **Precast Concrete Units***. Diam of opening is 6 in. (152 mm). Steel sleeve (Item 2) is required for floors constructed of hollow-core Precast Units.

See **Precast Concrete Units** (CFTV) category in the Fire Resistance Directory for names of manufacturers.

2. **Steel Sleeve** - (Optional) - Nom 6 in. (152 mm) diam Schedule 10 to Schedule 40 steel pipe or rigid steel conduit cast or grouted into concrete floor flush with floor surfaces.
3. **Firestop Device*** - The firestop device module consists of a 4 by 4-5/8 by 14 in. (102 by 118 by 356 mm) long galv steel tube with spring loaded steel retainer plates and an intumescent material lining. Firestop device module to be installed in accordance with the accompanying installation instructions. Firestop device module secured in place by means of two "L" shaped steel floor brackets installed with gasket material supplied with the product. Each floor bracket is secured to the device module by means of an integral hook and eye window attachment. Floor brackets are secured together forming the rectangular floor plate by means of steel screws and nuts supplied with the product. Floor plate to be secured to the top surface of the floor through predrilled holes in the floor plate using nom 3/16 in. (4.8 mm) by min 1-1/4 in. (32 mm) long concrete screws. As an option, the device may be cast or grouted into floor assembly. When the device is cast or grouted in place, the split floor plate is optional.

SPECIFIED TECHNOLOGIES INC - EZ PATH Series 44 Fire Rated Pathway



Specified Technologies Inc. 210 Evans Way Somerville, NJ 08876

Reproduced courtesy of Underwriters Laboratories, Inc.
Created or Revised: May 11, 2009

(800)992-1180 • (908)526-8000 • FAX (908)231-8415 • E-Mail:techserv@stifirestop.com • Website:www.stifirestop.com



F-A-3054
PAGE 1 OF 2

4. **Cables** - Within the loading area for the firestop device module, the loose or grouped cables may represent a 0 to 100 percent visual fill. Cables to be rigidly supported on both sides of the floor assembly. Any combination of the following types of cables may be used:
- A. Max 400 pair No. 24 AWG (or smaller) copper conductor telecommunication cable with polyvinyl chloride (PVC) or plenum-rated jacketing and insulation.
 - B. Max 750 kcmil single copper conductor power cable with XLPE jacket and insulation
 - C. Max 7/C No. 12 AWG copper conductor control cable with PVC or XLPE jacket and insulation.
 - D. Max 3/C No. 2/0 AWG metal clad or armored cable with steel or aluminum jacket.
 - E. Max 3/C No. 8 AWG NM cable (Romex) with PVC insulation and jacket.
 - F. Max four pair No. 22 AWG (or smaller) copper conductor data cable with PVC or plenum rated jacketing and insulation.
 - G. Coaxial cable with fluorinated ethylene or PVC insulation and jacketing having a max diam of 5/8 in. (16 mm).
 - H. Optical fiber cable with PVC or polyethylene (PE) jacket and insulation and having a max diam of 5/8 in. (16 mm).
 - I. **Optical Fiber Raceway+** - Max 1-1/2 in. (38 mm) diam (or smaller) optical fiber raceway ("innerduct") formed of either PVC or polyvinylidene fluoride (PVDF) with optical fiber cable fill. Raceways installed in accordance with the National Electrical Code (NFPA 70).

When Item 5A, 5B, 5C, 5D or 5E is used, the max F Rating is 3 hr. When Item 5F, 5G, 5H or 5I is used, the max F Rating is 4 hr. When cable fill within the device is min 0 percent (empty) to max 20 percent, the T Rating is 0 Hr. When cable fill within the device is greater than 20 percent, the T Rating is 1/2 Hr.

+Bearing the UL Listing Mark

*Bearing the UL Classification Mark



Specified Technologies Inc. 210 Evans Way Somerville, NJ 08876

Reproduced courtesy of Underwriters Laboratories, Inc.
Created or Revised: May 11, 2009

(800)992-1180 • (908)526-8000 • FAX (908)231-8415 • E-Mail:techserv@stifirestop.com • Website:www.stifirestop.com



F-A-3054
PAGE 2 OF 2