

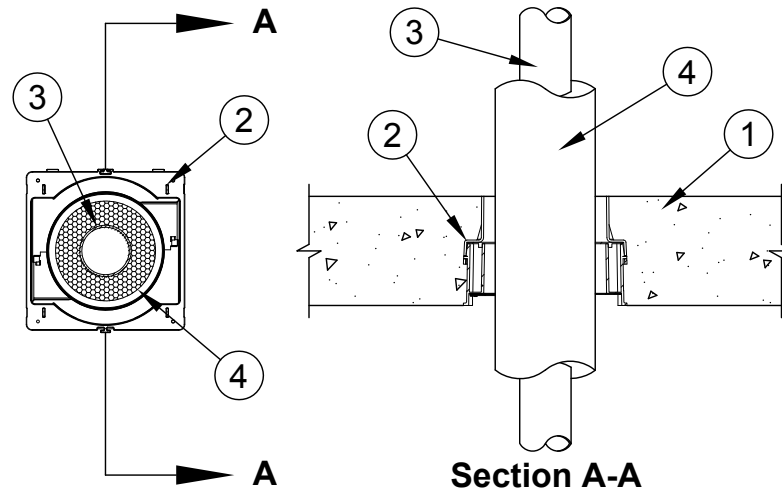
System No. F-A-5007

F Rating - 2 Hr
FT Rating - 1/4 Hr
FH Rating - 0 Hr
FTH Rating - 0 Hr

L Rating At Ambient - Less Than 1 CFM/sq ft (See Item 5 and 7)

L Rating At 400 F - Less Than 1 CFM/sq ft (See Item 5 and 7)

W Rating - Class 1 (See Item 5 and 7)



1. **Floor Assembly** - Min 4-1/2 in. (114 mm) thick reinforced lightweight or normal weight (100-150 pcf or 1600-2400 kg/m³) concrete floor.
- 1A. **Alternate Floor Assembly** - (Not Shown) - The fire rated unprotected concrete and steel deck floor assembly shall be constructed of the material and in the manner specified in the individual D900 Series designs in the UL Fire Resistance Directory and as summarized below:
 - A. **Concrete** - Min 4-1/2 in. (114 mm) thick reinforced lightweight or normal weight (100-150 pcf or 1600-2400 kg/m³) concrete, as measured from the top plane of the steel floor units.
 - B. **Steel Floor and Form Units*** - Composite or non-composite max 3 in. (76 mm) deep galv steel fluted units as specified in the individual Floor-Ceiling Design.
2. **Firestop Device*** - Cast in place firestop device permanently embedded during the concrete pour or grouted into the concrete assembly in accordance with the accompanying installation instructions. The devices may be cut flush or extend above the top surface of the floor.

SPECIFIED TECHNOLOGIES INC - SpecSeal CD200, CD200M, CD300, CD300M, CD400 or CD400M Cast In Firestop Device

- 2A. **Firestop Device*** - (Not Shown) - When Item 1A is used, a steel deck adapter kit consisting of steel plates and a nonmetallic extension tube is used in conjunction with Item 2. Install the deck adapter in accordance with the accompanying installation instructions.

SPECIFIED TECHNOLOGIES INC - SpecSeal CD200DK, CD300DK, or CD400DK Cast In Firestop Device Deck Adapter



Specified Technologies Inc. 200 Evans Way Somerville, NJ 08876

Reproduced courtesy of Underwriters Laboratories, Inc.

Created or Revised: June 08, 2009

(800)992-1180 • (908)526-8000 • FAX (908)231-8415 • E-Mail:techserv@stifirestop.com • Website:www.stifirestop.com



F-A-5007
PAGE 1 OF 2

2B. **Firestop Device*** - (Not Shown) - When the concrete thickness exceeds 8 in. (203 mm), a nonmetallic extension tube is used in conjunction with Item 2. Install the extension tube in accordance with the accompanying installation instructions.

SPECIFIED TECHNOLOGIES INC - SpecSeal CD200X, CD300X, or CD400X Cast In Firestop Device Extension

3. **Through Penetrant** - One metallic pipe or tube to be installed within the firestop system. Pipe or tube to be rigidly supported on both sides of the floor assembly. Penetrants to be rigidly supported on both sides of floor assembly. The following types and sizes of penetrants may be used.

- A. **Steel Pipe** - Nom 2 in. (25 mm) diam (or smaller) Schedule 10 (or heavier) steel pipe.
- B. **Iron Pipe** - Nom 2 in. (25 mm) diam (or smaller) cast or ductile iron pipe.
- C. **Copper Pipe** - Nom 2 in. (25 mm) diam (or smaller) Regular (or heavier) copper pipe.
- D. **Copper Tube** - Nom 2 in. (25 mm) diam (or smaller) Type M (or heavier) copper tube.

Nom Pipe Diam+, in. (mm)	Nom Thickness of Pipe Insulation, in. (mm)	Firestop Device
1/2 (13)	1 (25)	CD200 and CD200M
1 (25)	1 (25)	CD300 and CD300M
1-1/4 (32)	1 (25)	CD300 and CD300M
2 (51)	1 (25)	CD400 and CD400M

+When nom diam of metallic pipe or tubing is smaller than that shown in the table, fill material or packing material shall be installed in the device as described within Item 5 and 6.

4. **Pipe or Tube Insulation - Plastics#** - Nom 1 in. (25 mm) thick acrylonitrile butadiene/polyvinyl chloride (AB/PVC) flexible foam furnished in the form of tubing.

See **Plastics** (QMFZ2) category in the Plastics Recognized Component Directory for names of manufacturers. Any Recognized Component tube insulation meeting the above specifications and having a UL 94 Flammability Classification of 94-5VA may be used.

5. **Packing Material** - (Not Shown) - When required under Item 3, min 4 in. (102 mm) thickness of min 4 pcf (64 kg/m³) mineral wool firmly packed into device flush with top edge of device (Item 3). When L or W Rating is required, min 4 in. (102 mm) thickness of min 4 pcf (64 kg/m³) mineral wool firmly packed into the top of the device (Item 2) and recessed min 1/4 in. (6 mm) from top edge of device to accommodate for sealant (Item 6).

6. **Fill, Void, or Cavity Material* - Putty** - (Not Shown) - When required under Item 3, as an option to Item 5, min 1 in. (25 mm) depth of fill material applied within device flush with top edge of device (Item 2).

SPECIFIED TECHNOLOGIES INC - SpecSeal Putty

7. **Fill, Void, or Cavity Material*** - (Optional, Not Shown) - To achieve L or W Ratings, apply min 1/4 in. (6 mm) depth of sealant atop packing material (Item 4) flush with top edge of device.

SPECIFIED TECHNOLOGIES INC - Pensil 300 Sealant, SpecSeal Series SIL300 Sealant or Pensil 300 SL Sealant or SpecSeal Series SIL300 Sealant

*Bearing the UL Classification Mark

+Bearing the UL Listing Mark



Specified Technologies Inc. 200 Evans Way Somerville, NJ 08876

Reproduced courtesy of Underwriters Laboratories, Inc.

Created or Revised: June 08, 2009

(800)992-1180 • (908)526-8000 • FAX (908)231-8415 • E-Mail:techserv@stifirestop.com • Website:www.stifirestop.com



F-A-5007
PAGE 2 OF 2