



System No. F-A-7020

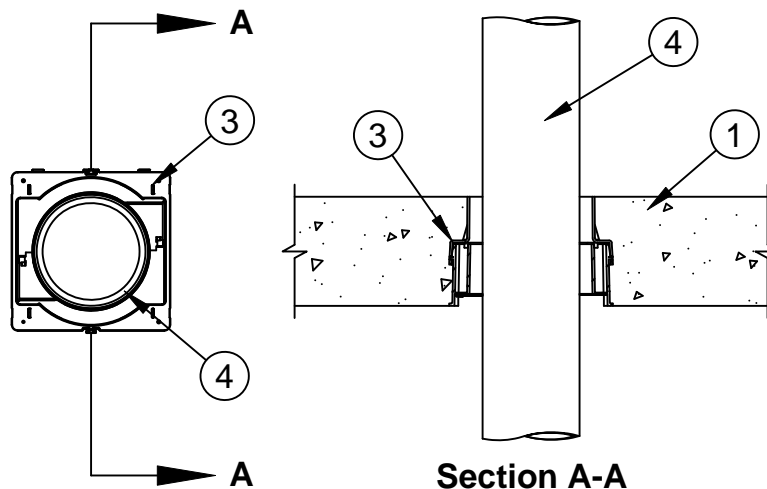
F Rating - 3 Hr

T Rating - 0 Hr

L Rating At Ambient - Less Than 1 CFM/sq ft

L Rating At 400 F - Less Than 1 CFM/sq ft

W Rating - Class 1 (See Items 4 and 5)



1. **Floor Assembly** - Min 4-1/2 in. (114 mm) thick reinforced lightweight or normal weight (100-150 pcf or 1600-2400 kg/m³) concrete floor.
- 1A. **Alternate Floor Assembly** - (Not Shown) - The fire rated unprotected concrete and steel floor assembly shall be constructed of the material and in the manner specified in the individual D900 Series designs in the UL Fire Resistance Directory and as summarized below:
 - A. **Concrete** - Min 4-1/2 in. (114 mm) thick reinforced lightweight or normal weight (100-150 pcf or 1600-2400 kg/m³) concrete, as measured from the top plane of the steel floor units.
 - B. **Steel Floor and Form Units*** - Steel Floor and Form Units* - Composite or non-composite max 3 in. (76 mm) deep galv steel fluted units as specified in the individual Floor-Ceiling Design.
2. **Firestop Device*** - Cast in place firestop device permanently embedded during the concrete pour or grouted into the concrete assembly in accordance with the accompanying installation instructions. The throat of the firestop device may be cut flush with the top surface of the floor or extend beyond the top surface of the floor.
SPECIFIED TECHNOLOGIES INC - SpecSeal CD400 or CD400M Cast In Firestop Device
- 2A. **Firestop Device*** - (Not Shown) - When Item 1A is used, a steel deck adapter kit consisting of steel plates and a nonmetallic extension tube is used in conjunction with Item 2. Install the deck adapter in accordance with the accompanying installation instructions.
SPECIFIED TECHNOLOGIES INC - SpecSeal CD400DK Cast In Firestop Device Deck Adapter



Specified Technologies Inc. 210 Evans Way Somerville, NJ 08876

Reproduced courtesy of Underwriters Laboratories, Inc.

Created or Revised: February 17, 2010

(800)992-1180 • (908)526-8000 • FAX (908)231-8415 • E-Mail:techserv@stifirestop.com • Website:www.stifirestop.com



F-A-7020
PAGE 1 OF 2

- 2B. **Firestop Device*** - (Not Shown) - When the concrete thickness exceeds 8 in. (204 mm), a nonmetallic extension tube is used in conjunction with Item 2. Install the extension tube in accordance with the accompanying installation instructions.

SPECIFIED TECHNOLOGIES INC - SpecSeal CD400X Cast In Firestop Device Extension

3. **Steel Duct** - One 4 in. to 4-1/2 in. (102 to 114 mm) diam, No. 30 GA (or heavier) steel duct. Steel duct rigidly supported on both sides of assembly. Water resistance of steel duct must be considered for W Rating in addition to water resistance of firestop system (Items 4 and 5).
4. **Packing Material** - (Optional, Not Shown) - Min 4 in. (51 mm) thickness of min 4 pcf (64 kg/m³) mineral wool firmly packed into device flush with top edge of device (Item 2). When W Ratings are required, recess mineral wool 1/4 in. (6 mm) from top edge of device to accommodate sealant (Item 5).
5. **Fill, Void, or Cavity Material*** - (Optional, Not Shown) - Min 1/4 in. (6 mm) depth of sealant applied atop mineral wool (Item 4) flush with top edge of device. W Ratings apply only when fill material is used.

SPECIFIED TECHNOLOGIES INC - Pensil 300 Silicone Sealant, Pensil 300SL Silicone Sealant, SpecSeal Series SIL 300 Sealant or SpecSeal SIL 300SL Sealant

*Bearing the UL Classification Mark

+Bearing the UL Listing Mark



Specified Technologies Inc. 210 Evans Way Somerville, NJ 08876

Reproduced courtesy of Underwriters Laboratories, Inc.

Created or Revised: February 17, 2010

(800)992-1180 • (908)526-8000 • FAX (908)231-8415 • E-Mail:techserv@stifirestop.com • Website:www.stifirestop.com



F-A-7020
PAGE 2 OF 2