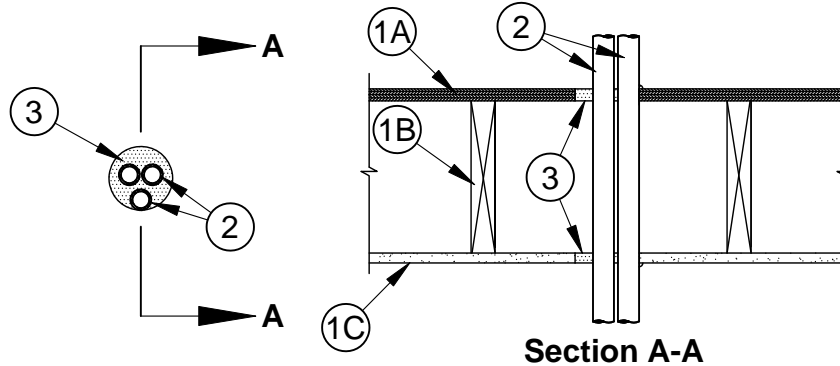




System No. F-C-1075

F Ratings - 1 Hr and 2 Hr (See Item 1)
 T Ratings - 1/4, 1/2 and 1 Hr (See Item 2)
 L Rating At Ambient - Less Than 1 CFM/sq ft
 L Rating At 400 F - Less Than 1 CFM/sq ft



Section A-A

1. **Floor - Ceiling Assembly** - The 1 hr fire-rated wood joist floor-ceiling assembly shall be constructed of the materials and in the manner specified in the individual L500 Designs in the UL Fire Resistance Directory. The 2 hr fire-rated wood joist floor-ceiling assembly shall be constructed of the materials and in the manner specified in Design Nos. L505, L511 or L536 in the UL Fire Resistance Directory. **The F Rating of the firestop system is equal to the fire rating of the floor-ceiling assembly**. The general construction features of the floor assembly are summarized below:
 - A. **Flooring System** - Lumber or plywood subfloor with finish floor of lumber, plywood or **Floor Topping Mixture*** as specified in the individual Floor-Ceiling Design. Max diam of opening is 4 in. (102 mm). As an alternate, the the opening may be square-cut with a max area of 16 sq in. (103 cm²) an a max dimension of 4 in. (102 mm).
 - B. **Wood Joists** - Nom 10 in. (254 mm) deep (or deeper) lumber, steel or combination lumber and steel joists, trusses or **Structural Wood Members*** with bridging as required and with ends firestopped.
 - C. **Gypsum Board*** - Thickness, type, number of layers and fasteners as required in the individual Floor-Ceiling Design. Max diam of opening is 4 in.
 - D. **Furring Channel** - (Not Shown) - In 2 hr fire-rated assemblies, resilient galv steel furring channels installed perpendicular to wood joists between base and face layers of gypsum board (Item C). Furring channels spaced max 24 in. (610 mm) OC with additional short lengths of furring channel installed adjacent to and max 3 in. (76 mm) from two opposing sides of penetrants.
- 1A. **Chase Wall** - (Optional, Not Shown) - The through penetrant (Item 2) may be routed through a 1 or 2 hr fire rated single, double or staggered wood stud/gypsum board chase wall. Depth of chase wall stud cavity to be min 1/2 in. (13 mm) greater than diameter of opening cut in sole and top plates to accommodate the through penetrant (Item 2). The chase wall shall be constructed of the materials and in the manner specified in the individual U300 Series Wall and Partition Designs in the UL Fire Resistance Directory and shall include the following construction features:
 - A. **Studs** - Nom 2 by 4 in. (51 by 102 mm), 2 by 6 in. (51 by 152 mm) or double nom 2 by 4 in. (51 by 102 mm) lumber studs.
 - B. **Sole Plate** - Nom 2 by 4 in. (51 by 102 mm), 2 by 6 in. (51 by 152 mm) or parallel 2 by 4 in. (51 by 102 mm) lumber plates, tightly butted. Max diam of opening is 4 in. (102 mm).
 - C. **Top Plate** - The double top plate shall consist of two nom 2 by 4 in. (51 by 102 mm), two nom 2 by 6 in. (51 by 152 mm) or two sets of parallel 2 by 4 in. (51 by 102 mm) lumber plates, tightly butted. Max diam of opening is 4 in. (102 mm).
 - D. **Gypsum Board*** - Thickness, type, number of layers and fasteners shall be as specified in the individual Wall and Partition Design.
2. **Through Penetrants** - One or more metallic pipes, conduits or tubing to be installed either concentrically or eccentrically within the opening. The space between the pipes, conduits or tubing shall be min 1/4 in. to max 1/2 in. (6 to 13 mm). Annular space between the pipes, conduits or tubing and the periphery of the opening shall be min 0 in. (point contact) to max 1 in. (0 to 25 mm). Penetrants to be rigidly supported on both sides of floor-ceiling assembly. The following types and sizes of metallic pipe, conduits or tubing may be used:



Specified Technologies Inc. 210 Evans Way Somerville, NJ 08876

Reproduced courtesy of Underwriters Laboratories, Inc.
 Created or Revised: June 17, 2010

(800)992-1180 • (908)526-8000 • FAX (908)231-8415 • E-Mail:techserv@stifirestop.com • Website:www.stifirestop.com



F-C-1075
 PAGE 1 OF 2

- A. **Steel Pipe** - Nom 1 in. (25 mm) diam (or smaller) Schedule 5 (or heavier) steel pipe.
- B. **Iron Pipe** - Nom 1 in. (25 mm) diam (or smaller) cast or ductile iron pipe.
- C. **Conduit** - Nom 1 in. (25 mm) diam (or smaller) steel conduit, steel electrical metallic tubing or flexible steel conduit.
- D. **Copper Pipe or Tube** - Nom 1 in. (25 mm) diam (or smaller) Regular (or heavier) copper pipe or Type L (or heavier) copper tube.

The T Rating is 1/4 hr when copper pipe or tube is used in 1 hr fire-rated assemblies. The T Rating is 1/2 hr when copper pipe of tube is used in 2 hr fire-rated assemblies. When steel pipe, iron pipe, steel conduit or flexible metal piping (Item 2A) is used, T Rating is 1 hr.

- 2A. **Through Penetrating Product* - Flexible Metal Piping** - As an alternate to Item 2, one or more nom 1 in. (25 mm) diam (or smaller) steel flexible metal pipes to be installed either concentrically or eccentrically within the firestop. The space between the pipes shall be min 1/4 in. to max 1/2 in. (6 to 13 mm). Annular space between the pipes and the periphery of the opening shall be min 0 in. (point contact) to max 1 in. (0 to 25 mm). Pipes to be rigidly supported on both sides of floor-ceiling assembly.

OMEGA FLEX INC

GASTITE, DIV OF TITFLEX

WARD MFG L L C

- 3. **Fill, Void or Cavity Material* - Sealant** - Min 3/4 in. (19 mm) thickness of fill material applied within the annulus, flush with the top surface of the floor or sole plate. Min 5/8 in. (16 mm) thickness of fill material applied within the annulus, flush with bottom surface of ceiling or top plate. Min 1/4 in. (6 mm) diam bead of fill material applied at point contact location on the top surface of floor or sole plate and at the penetrant/ceiling or top plate interface.

SPECIFIED TECHNOLOGIES INC - SpecSeal LCI Sealant or Type WF300 Firestop Caulk

*Bearing the UL Classification Mark



Specified Technologies Inc. 210 Evans Way Somerville, NJ 08876

Reproduced courtesy of Underwriters Laboratories, Inc.
Created or Revised: June 17, 2010

(800)992-1180 • (908)526-8000 • FAX (908)231-8415 • E-Mail:techserv@stifirestop.com • Website:www.stifirestop.com



F-C-1075
PAGE 2 OF 2