

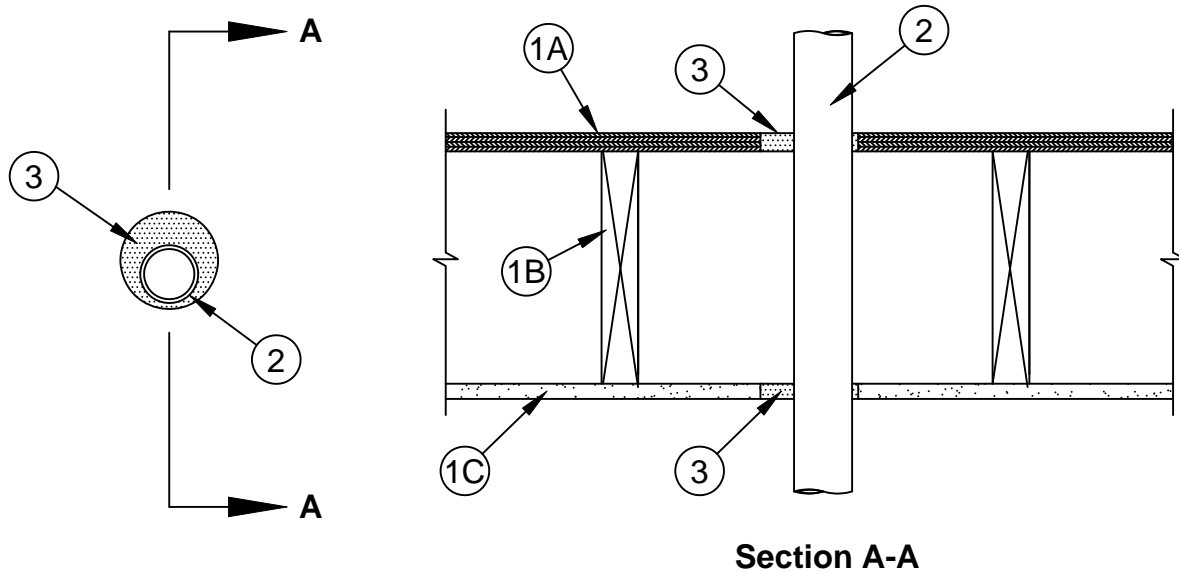
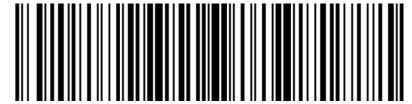
System No. F-C-2032

F Rating - 1 Hr

T Ratings - 0, 1/4, 3/4 and 1 Hr (See Item 2)

L Rating At Ambient - Less Than 1 CFM/sq ft

L Rating At 400 F - Less Than 1 CFM/sq ft



Section A-A

1. **Floor - Ceiling Assembly** - The 1 hr fire-rated solid or trussed lumber joist floor-ceiling assembly shall be constructed of the materials and in the manner specified in individual L500 Series Floor-Ceiling Designs in the UL Fire Resistance Directory. The general construction details of the floor-ceiling assembly are summarized below:
 - A. **Flooring System** - Lumber or plywood subfloor with finish floor of lumber, plywood or **Floor Topping Mixture*** as specified in the individual Floor-Ceiling Design. Max diam of floor opening is 4 in. (102 mm).
 - B. **Wood Joists** - Nom 2 by 10 in. (51 by 254 mm) lumber joists spaced 16 in. (406 mm) OC with nom 1 by 3 in. (25 by 76 mm) lumber bridging and with ends firestopped. As an alternate to lumber joists, nom 10 in. (254 mm) deep (or deeper) lumber, steel or combination lumber and steel joists, trusses or **Structural Wood Members*** with bridging as required and with ends firestopped.
 - C. **Furring Channels** - (Not Shown) - Resilient galv steel furring installed perpendicular to wood joists (Item 1B) between gypsum board (Item 1D) and wood joists as required in the individual Floor-Ceiling Design.
 - D. **Gypsum Board*** - Nom 4 ft (1.2 m) wide by 5/8 in. (16 mm) thick as specified in the individual Floor-Ceiling Design. Gypsum board secured to wood joists or furring channels as specified in the individual Floor-Ceiling Design. Max diam of ceiling opening is 4 in. (102 mm).
- 1.1 **Chase Wall** - (Optional. Not Shown) - The through penetrant (Item No. 2) may be routed through a fire rated or non fire rated single, double or staggered wood stud/gypsum board chase wall. When fire rated the chase wall shall be constructed of the materials and in the manner specified in the individual U300 Series Wall and Partition Designs in the UL Fire Resistance Directory and shall include the following construction features:
 - A. **Studs** - Nom 2 by 4 in. (51 by 102 mm), 2 by 6 in. (51 by 152 mm) or double 2 by 4 in. (51 by 102 mm) lumber studs.
 - B. **Sole Plate** - Nom 2 by 4 in. (51 by 102 mm), 2 by 6 in. (51 by 152 mm) or parallel 2 by 4 in. (51 by 102 mm) lumber plates, tightly butted.
 - C. **Top Plate** - The double top plate shall consist of two nom 2 by 4 in. (51 by 102 mm) or 2 by 6 in. (51 by 152 mm) or two sets of parallel 2 by 4 in. (51 by 102 mm) lumber plates, tightly butted. Max diam of opening is 4 in. (102 mm).
 - D. **Gypsum Board*** - Thickness, type, number of layers and fasteners shall be as specified in individual Wall and Partition Design.



Specified Technologies Inc. 210 Evans Way Somerville, NJ 08876

Reproduced courtesy of Underwriters Laboratories, Inc.

Created or Revised: June 17, 2010

(800)992-1180 • (908)526-8000 • FAX (908)231-8415 • E-Mail:techserv@stifirestop.com • Website:www.stifirestop.com



F-C-2032
PAGE 1 OF 2

2. **Through-Penetrants** - One nonmetallic pipe, conduit or tubing to be installed within the firestop system. Diam of openings hole-sawed through flooring system and through gypsum board ceiling to be 1/4 to 1-5/8 in. (6 to 41 mm) larger than the outside diam of through-penetrant. Pipe, conduit or tubing to be rigidly supported on both sides of the floor-ceiling assembly. The following types and sizes of nonmetallic pipes, conduits or tubing may be used:
- A. **Polyvinyl Chloride (PVC) Pipe** - Nom 2 in. (51 mm) diam (or smaller) Schedule 40 solid or cellular core PVC pipe for use in closed (process or supply) or vented (drain, waste or vent) piping systems. **The T Rating for the firestop system when this penetrant is used is 1 hr except that when nom diam of pipe exceeds 1 in. (25 mm), the T Rating is 1/4 hr.**
 - B. **Rigid Nonmetallic Conduit (RNC)+** - Nom 2 in. (51 mm) diam (or smaller) Schedule 40 PVC conduit installed in accordance with Article 347 of the National Electrical Code (NFPA No. 70). **The T Rating for the firestop system when this penetrant is used is 1 hr except that when nom diam of pipe exceeds 1 in. (25 mm), the T Rating is 1/4 hr.**
 - C. **Chlorinated Polyvinyl Chloride (CPVC) Pipe** - Nom 2 in. (51 mm) diam (or smaller) SDR 17 CPVC pipe for use in closed (process or supply) or vented (drain, waste or vent) piping systems. **The T Rating for the firestop system when this penetrant is used is 1 hr except that when nom diam of pipe exceeds 1 in. (25 mm), the T Rating is 1/4 hr.**
 - D. **Acrylonitrile Butadiene Styrene (ABS) Pipe** - Nom 2 in. (51 mm) diam (or smaller) Schedule 40 cellular or solid core ABS pipe for use in closed (process or supply) or vented (drain, waste or vent) piping systems. **The T Rating for the firestop system when this penetrant is used is 0 hr.**
 - E. **Polybutylene (PB) Pipe** - Nom 1 in. (25 mm) diam (or smaller) SDR 11 PB pipe for use in closed (process or supply) piping systems. **The T Rating for the firestop system when this penetrant is used is 1 hr.**
 - F. **Cross Linked Polyethylene Aluminum-Cross Linked Polyethylene (PEX AL-PEX) Tubing** - Nom 1 in. (25 mm) diam (or smaller) SDR 5 PEX-AL-PEX tubing for use in closed (process or supply) piping systems. **The T Rating for the firestop system when this penetrant is used is 3/4 hr.**
 - G. **Cross Linked Polyethylene (PEX) Tubing** - Nom 2 in. (51 mm) diam (or smaller) SDR 9 PEX tubing for use in closed (process or supply) piping systems. **The T Rating for the firestop system when this penetrant is used is 1 hr.**
 - H. **Electrical Nonmetallic Tubing (ENT)+** - Nom 2 in. (51 mm) diam (or smaller) PVC tubing installed in accordance with Article 331 of the National Electrical Code (NFPA No. 70). **The T Rating for the firestop system when this penetrant is used is 1 hr except that when nom diam of tube exceeds 1 in. (25 mm), the T Rating is 1/4 hr.**
 - I. **Chlorinated Polyvinyl Chloride (CPVC) Pipe** - Nom 2 in. (51 mm) diam (or smaller) Schedule 80 CPVC pipe for use in closed (process or supply) piping systems.
 When 2A, 2B, 2C, 2E, 2F, 2G, 2H or 2I is used, the annular space shall be min 0 in. (point contact) to max 1-5/8 in. (41 mm). When 2D is used, the annular space shall be min 0 in. (point contact) to max 1 in. (25 mm) except that when nom pipe diam exceeds 1-1/2 in. (38 mm), the max annular space is 5/8 in. (16 mm).
3. **Fill, Void or Cavity Material* - Sealant** - Min 3/4 in. (19 mm) thickness of fill material applied within annulus on top surface of floor. Min 5/8 in. (16 mm) thickness of fill material applied within annulus on bottom surface of ceiling or lower top plate of chase wall assembly. Additional fill material to be installed such that a min 1/8 in. (3 mm) crown is formed around the through penetrant on bottom surface of ceiling or lower plate of chase wall assembly.

SPECIFIED TECHNOLOGIES INC - SpecSeal Series SSS Sealant, r SpecSeal LCI Sealant, or Type WF300 Firestop Caulk

+Bearing the UL Listing Mark

*Bearing the UL Classification Marking



Specified Technologies Inc. 210 Evans Way Somerville, NJ 08876

Reproduced courtesy of Underwriters Laboratories, Inc.
 Created or Revised: June 17, 2010

(800)992-1180 • (908)526-8000 • FAX (908)231-8415 • E-Mail:techserv@stifirestop.com • Website:www.stifirestop.com



F-C-2032
 PAGE 2 OF 2