

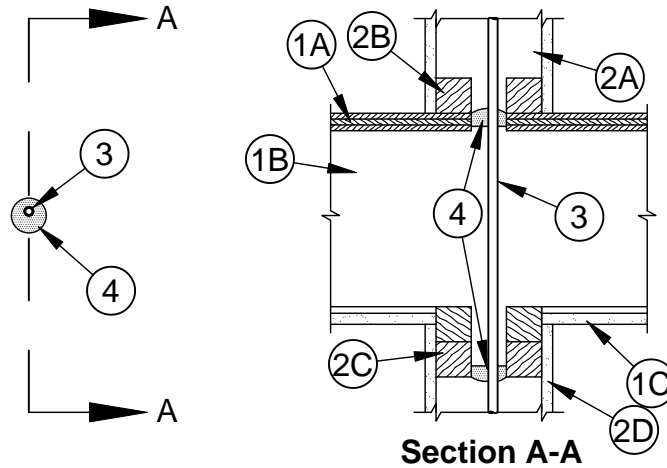
## System No. F-C-3016

F Rating - 1 Hr

T Ratings - 3/4 and 1 Hr (See Items 3 and 3A)

L Rating at Ambient - Less Than 1 CFM/sq ft

L Rating at 400° F - Less Than 1 CFM/sq ft



Section A-A

- Floor-Ceiling Assembly** - The 1 hr fire-rated solid or trussed lumber joist Floor-Ceiling assembly shall be constructed of the materials and in the manner specified in the individual L500 Series Floor-Ceiling Designs in the UL Fire Resistance Directory, as summarized below:
  - Flooring System** - Lumber or plywood subfloor with finish floor of lumber, plywood or **Floor Topping Mixture\*** as specified in the individual Floor-Ceiling Design. Max diam of floor opening is 2 in. (51 mm).
  - Joists** - Nom 10 in. (254 mm) deep (or deeper) lumber and steel joist, trusses or **Structural Wood Members\*** with bridging as required and with ends firestopped.
  - Gypsum Board\*** - Nom 4 ft (1.2 m) wide by 5/8 in. (16 mm) thick. Gypsum board directly attached to joists or attached to furring channels as specified in the individual Floor-Ceiling Design. Max diam of opening is 2 in. (51 mm).
- Chase Wall** - (Optional) - The through penetrants (Item 3) may be routed through a 1 hr fire-rated single, double or staggered wood stud/gypsum board chase wall constructed of the materials and in the manner specified in the individual U300 Series Wall and Partition Designs in the UL Fire Resistance Directory and shall include the following construction features:
  - Studs** - Nom 2 by 6 in. (51 by 152 mm) or double nom 2 by 4 in. (51 by 102 mm) lumber studs.
  - Sole Plate** - Nom 2 by 6 in. (51 by 152 mm) or parallel 2 by 4 in. (51 by 102 mm) lumber plates, tightly butted.
  - Top Plate** - The double top plate shall consist of two nom 2 by 6 in. (51 by 152 mm) or two sets of parallel 2 by 4 in. (51 by 102 mm) lumber plates, tightly butted. Max diam of opening is 2 in. (51 mm).
  - Gypsum Board\*** - Thickness, type, number of layers and fasteners shall be as specified in individual Wall and Partition Design.
- Cables** - One or more cables cable to be installed either concentrically or eccentricity within the firestop system. Cables to be installed approximately midway between wood joists. Diam of openings hole-sawed through flooring system and through ceiling or sole and top plates of chase wall assembly to be nom 3/8 in. (10 mm) larger than the outside diam of cable or cable bundle. Cable to be rigidly supported on both sides of floor-ceiling assembly. The following types and sizes of cables may be used:
  - Max 100 pair No. 24 AWG (or smaller) copper conductor telephone cables with polyvinyl chloride (PVC) insulation and jacket materials.
  - Max 3/C (with ground) No. 2/0 AWG aluminum conductor service entrance cable with PVC insulation and jacket materials.
  - Max 3/C (with ground) No. 12 AWG (or smaller) copper conductor nonmetallic sheathed (Romex) cable with PVC insulation and jacket materials.The number of cables allowed within the opening and the hourly T Rating is dependent upon the type and size of cable as tabulated in Item 3A.



Specified Technologies Inc. 210 Evans Way Somerville, NJ 08876

Reproduced courtesy of Underwriters Laboratories, Inc.

Created or Revised: January 2, 2009

(800)992-1180 • (908)526-8000 • FAX (908)231-8415 • E-Mail:techserv@stifirestop.com • Website:www.stifirestop.com



F-C-3016  
PAGE 1 OF 2

3A. **Through Penetrating Product\*** - (Not Shown) - As an alternate to Item 3, max through-penetrating product to be installed either concentrically or eccentricity within the firestop system. Cable to be installed approximately midway between wood joists. Diam of openings hole-sawed through flooring system and through ceiling or sole and top plates of chase wall assembly to be nom 3/8 in. (10 mm) larger than the outside diam of cable. Through-penetrating product to be rigidly supported on both sides of a floor-ceiling assembly. The following types of through-penetrating products may be used:

A. Max four copper conductors No. 2/0 AWG (or smaller) aluminum or steel **Armored Cable#** or **Metal-Clad Cable+**.

**AFC CABLE SYSTEMS INC**

B. Two or more twisted copper conductor No. 6 AWG (or smaller) **Power Limited Circuit Cable+** with or without a jacket under a metal armor.

**AFC CABLE SYSTEMS INC**

C. Two or more twisted copper conductor No. 10 AWG (or smaller) **Power Limited Fire Alarm Cable+** with or without a jacket under a metal armor.

**AFC CABLE SYSTEMS INC**

D. Two or more twisted copper conductor No. 12 AWG (or smaller) **Non Power Limited Fire Alarm Cable+** with or without a jacket under a metal armor.

**AFC CABLE SYSTEMS INC**

The number of through penetrants permitted within the firestop system is dependent upon the type and size of through penetrant as tabulated below:

Type Of Through Penetrant	Max Number Of Penetrants	T RATING (Hr)
Telephone Cable	1	1
Service Entrance Cable	1	1
Armored Cable	1	3/4
Romex Cable	7	3/4
Metal Clad Cable, Power Limited Circuit Cable,	1	3/4
Non Power Limited Fire Alarm Cable or		3/4
Power Limited Fire Alarm Cable		3/4

4. **Fill, Void or Cavity Material\* - Sealant** - Min 3/4 in. (19 mm) thickness of fill material applied within the annulus, flush with top surface of floor or sole plate. Min 5/8 in. (16 mm) thickness of fill material also applied within the annulus of the ceiling or top plate, flush with bottom surface of ceiling or lower top plate. When multiple cables are installed, the cables must be individually separated such that the sealant can be applied between the individual cables for the L Ratings to apply.

**SPECIFIED TECHNOLOGIES INC** - SpecSeal Series SSS Sealant or SpecSeal LCI Sealant

\*Bearing the UL Classification Mark



**Specified Technologies Inc. 210 Evans Way Somerville, NJ 08876**

Reproduced courtesy of Underwriters Laboratories, Inc.

Created or Revised: January 2, 2009

(800)992-1180 • (908)526-8000 • FAX (908)231-8415 • E-Mail:techserv@stifirestop.com • Website:www.stifirestop.com



F-C-3016  
PAGE 2 OF 2