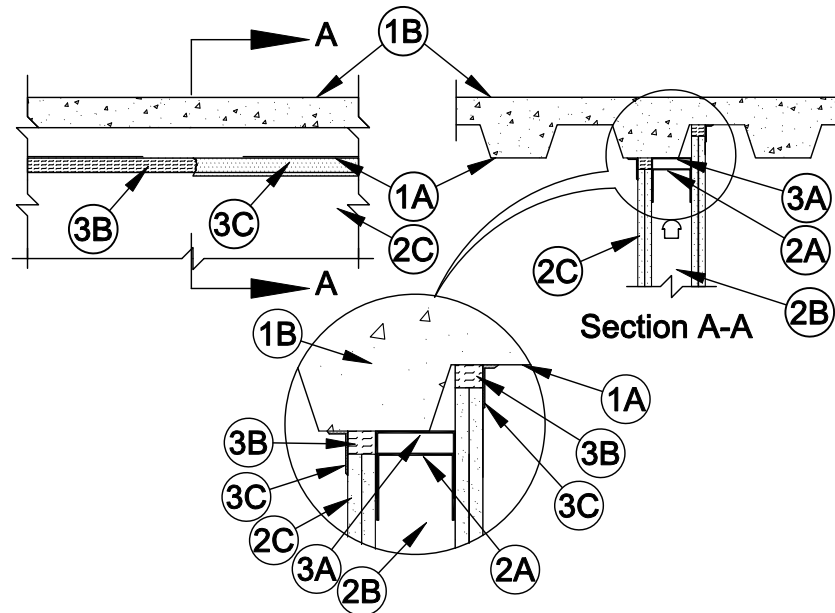




System No. HW-D-0365

Assembly Ratings - 1 and 2 Hrs (See Item 2)
 Nominal Joint Width - 3/4 or 1 In. (See Item 3)
 L Rating At Ambient - Less Than 1 CFM/Lin Ft
 L Rating At 400°F - Less Than 1 CFM/Lin Ft
 Class II Movement Capabilities - 25% or 100% Compression or Extension (See Item 3)



1. **Floor Assembly** - The fire-rated fluted steel deck/concrete floor assembly shall be constructed of the materials and in the manner described in the individual Floor-Ceiling Design in the UL Fire Resistance Directory and shall include the following construction features:
 - A. **Steel Floor and Form Units*** - Max 3 in. (76 mm) deep galv steel fluted floor units having a min valley width of 4-3/4 in. (121 mm).
 - B. **Concrete** - Min 2-1/2 in. (64 mm) thick reinforced concrete, as measured from the top plane of the floor units.
- 1A. **Roof Assembly** - (Not Shown) - As an alternate to the floor assembly (Item 1), a fire rated fluted steel deck roof assembly may be used. The roof assembly shall be constructed of the materials and in the manner described in the individual P900 Series Roof-Ceiling Design in the UL Fire Resistance Directory. The hourly fire rating of the roof assembly shall be equal to or greater than the hourly fire rating of the wall assembly. The roof assembly shall include the following construction features:
 - A. **Steel Roof Deck** - Max 3 in. (76 mm) deep galv steel fluted roof deck having a min valley width of 4-3/4 in. (121 mm).
 - B. **Roof Insulation** - Min 2-1/4 in. (57 mm) thick poured insulating concrete, as measured from the top plane of the steel roof deck.
 - C. **Roof Covering*** - Hot mopped or cold-application materials compatible with insulating concrete.
2. **Wall Assembly** - The 1 or 2 hr fire-rated gypsum board/stud wall assembly shall be constructed of the materials and in the manner described in the individual U400 or V400 Series Wall and Partition Design in the UL Fire Resistance Directory and shall include the following construction features:
 - A. **Steel Floor and Ceiling Runners** - Floor and ceiling runners of wall assembly shall consist of galv steel channels sized to accommodate steel studs . Ceiling runner to be provided with min 1-1/4 in. (32 mm) to max 3 in. (76 mm) flanges. When deflection channel (Item 3A) is used, flange height of ceiling runner is to be equal to or greater than flange height of deflection channel and the ceiling runner is to nest within the deflection channel with a 1/2 to 1 in. (13 to 25 mm) gap maintained between the top of the ceiling runner and the top of the deflection channel. When deflection channel is not used, ceiling runner installed parallel with direction of fluted steel floor units or roof deck and secured to valley with steel fasteners or welds spaced max 24 in. (610 mm) OC. Ceiling runner not to cantilever more than 1-1/2 in. (38 mm) beyond edge of valley.



Specified Technologies Inc. 210 Evans Way Somerville, NJ 08876

Reproduced courtesy of Underwriters Laboratories, Inc.
 Created or Revised: March 19, 2010

(800)992-1180 • (908)526-8000 • FAX (908)231-8415 • E-Mail:techserv@stifirestop.com • Website:www.stifirestop.com



HW-D-0365
 PAGE 1 OF 3

- A1. **Light Gauge Framing* - Slotted Ceiling Runner** - As an alternate to the ceiling runner in Item 2A, slotted ceiling runner consisting of galv steel channel with slotted flanges sized to accommodate steel studs (Item 2B). Ceiling runner installed parallel with direction of fluted steel floor or roof deck and secured to valley with steel fasteners or welds spaced max 24 in. OC. Slotted ceiling runner not to cantilever more than 1-1/2 in. beyond edge of valley. When slotted ceiling runner is used, deflection channel (Item 3A) shall not be used.

BRADY CONSTRUCTION INNOVATIONS INC,

DBA SLIPTRACK SYSTEMS - SLP-TRK

CALIFORNIA EXPANDED METAL PRODUCTS CO - CST

CLARKWESTERN BUILDING SYSTEMS INC - Type SLT, SLT-H

METAL-LITE INC - The System

- A2. **Light Gauge Framing* - Clipped Ceiling Runner** - As an alternate to the ceiling runner in Items 2A and 2A1, clipped runner to consist of galv steel channel with clips preformed in track flanges which positively engage the inside flange of the steel studs (Item 2B). Track sized to accommodate steel studs (Item 2B). Track flanges to be min 3-1/4 in. (83 mm). Clipped ceiling runner installed parallel with direction of fluted steel floor units or roof deck and secured to valley with steel fasteners spaced max 24 in. (610 mm) OC. Clipped ceiling runner not to cantilever more than 1-1/2 in. (38 mm) beyond edge of valley. When clipped ceiling runner is used, deflection channel (Item 3A) shall not be used.

TOTAL STEEL SOLUTIONS L L C - Snap Trak

- A3. **Light Gauge Framing* - Vertical Deflection Ceiling Runner** - As an alternate to the ceiling runner in Items 2A, 2A1 and 2A2, vertical deflection ceiling runner consisting of galv steel channel with slotted vertical deflection clips mechanically fastened within runner. Slotted clips, provided with step bushings, for permanent fastening of steel studs. Vertical deflection ceiling runner installed parallel with direction of fluted steel floor or roof deck and secured to valley with steel fasteners or welds spaced max 24 in. (610 mm) OC. Vertical deflection ceiling runner not to cantilever more than 1-1/2 in. (38 mm) beyond edge of valley. When vertical deflection ceiling runner is used, deflection channel (Item 3A) shall not be used.

THE STEEL NETWORK INC - VertiTrack VTD362, VTD400, VTD600 and VTD800

- B. **Studs** - Steel studs to be min 3-5/8 in. (92 mm) wide. Studs cut 1/2 to 3/4 in. (13 to 19 mm) less in length than assembly height with bottom nesting in and secured to floor runner. When deflection channel (Item 3A) is used, steel studs attached to ceiling runner (Item 2A) with sheet metal screws located 3/4 in. (19 mm) below the bottom to the deflection channel. When deflection channel is not used, studs to nest in ceiling runner without attachment. When slotted ceiling runner (Item 2A1) is used, steel studs secured to slotted ceiling runner with No. 8 by 1/2 in. (13 mm) long wafer head steel screws at midheight of slot on each side of wall. When vertical deflection ceiling runner (Item 2A3) is used, steel studs secured to slotted vertical deflection clips, through bushings, with steel screws at midheight of each slot. Stud spacing not to exceed 24 in. (610 mm) OC.
- C. **Gypsum Board*** - Gypsum board sheets installed to a min total 5/8 or 1-1/4 in. (16 or 32 mm) thickness on each side of wall for 1 and 2 hr rated assemblies, respectively. Wall to be constructed as specified in the individual U400 or V400 Series Design in the UL Fire Resistance Directory, except that a max 1 in. (25 mm) gap shall be maintained between the top of the gypsum board and the underside of the steel floor or roof deck. The screws attaching the gypsum board to the studs along the top of the wall shall be located 1 in. (25 mm) below the bottom of the ceiling runner. No gypsum board attachment screws shall be driven into the ceiling runner or into the optional deflection channel.

The hourly fire rating of the joint system is equal to the hourly fire rating of the wall.

3. **Joint System - Max separation between floor or roof deck and top of gypsum board (at time of installation of joint system) is 3/4 or 1 in. (19 or 25 mm). The joint system is designed to accommodate a max 25 or 100 percent compression or extension from its installed width. When Item 3B1 is used in lieu of the mineral wool strips described in Item 3B, the maximum joint width is 3/4 in. (19 mm) and the movement capabilities are 100% compression or extension.** The joint system shall consist of forming and fill materials, with or without a deflection channel (Item 3A), as follows:

- A. **Deflection Channel** - Max 3 in. (76 mm) deep min 24 gauge galv steel channel sized to accommodate ceiling runner (Item 2A). Deflection channel installed parallel with direction of fluted steel floor units or roof deck and secured to valley with steel fasteners or welds spaced max 24 in. (610 mm) OC. Deflection channel not to cantilever more than 1-1/2 in. (38 mm) beyond edge of valley. The ceiling runner (Item 2A) is installed within the deflection channel to maintain a 1/2 to 1 in. (13 to 25 mm) gap between the top of the ceiling runner and the top of the deflection channel. The ceiling runner nests inside the deflection channel without attachment.



Specified Technologies Inc. 210 Evans Way Somerville, NJ 08876

Reproduced courtesy of Underwriters Laboratories, Inc.

Created or Revised: March 19, 2010

(800)992-1180 • (908)526-8000 • FAX (908)231-8415 • E-Mail:techserv@stifirestop.com • Website:www.stifirestop.com



HW-D-0365
PAGE 2 OF 3

- B. **Forming Material*** - Min 5/8 or 1-1/4 in. (16 or 32 mm) wide strips of nom 4 pcf (64 kg/m³) density mineral wool batt insulation for 1 or 2 hr rated assemblies, respectively. Strips of mineral wool compressed 50 percent in thickness and installed cut edge first to fill the gap between the top of the gypsum board and the underside of the steel floor or roof deck. The forming material shall be installed flush with both surfaces of wall.

FIBREX INSULATIONS INC - FBX Safing Insulation

IIG MINWOOL L L C - MinWool-1200 Safing

ROCK WOOL MANUFACTURING CO - Delta Board

ROXUL ASIA SDN BHD - Safe

ROXUL INC - Safe

THERMAFIBER INC - Type SAF

- B1. **Forming Material*** - (Not Shown) - As an option to Item 3B, nom 3/16 in. (4.8 mm) thick by 4 in. (102 mm) high joint forming material profile installed on both sides of the wall assembly. Profile installed by first marking a line across the top of the wall 3 in. (76 mm) below the bottom plane of the steel floor or roof deck valleys. Joint profile material positioned with its top edge against the underside of the steel deck and with its bottom edge on the line scribed on the wall assembly. Bottom of the joint profile attached to gypsum board with nom 1/2 in. (13 mm) long steel staples spaced not greater than 8 in. (203 mm) OC. Adjoining lengths of profile to overlap approx 3/4 in. (19 mm) at shiplapped ends.

SPECIFIED TECHNOLOGIES INC - SpecSeal Speed Flex Joint Profile

- C. **Fill, Void or Cavity Material* - Sealant** - Min 1/8 in. (3.2 mm) wet thickness (min 1/16 in. or 1.6 mm dry thickness) of fill material spray applied on each side of the wall between the top of the wall and the bottom of the steel floor or roof deck, overlapping min 1/2 in. (13 mm) onto both the gypsum board and steel floor or roof deck on both sides of wall.

SPECIFIED TECHNOLOGIES INC - SpecSeal AS 200 Elastomeric Spray

*Bearing the UL Classification Mark



Specified Technologies Inc. 210 Evans Way Somerville, NJ 08876

Reproduced courtesy of Underwriters Laboratories, Inc.

Created or Revised: March 19, 2010

(800)992-1180 • (908)526-8000 • FAX (908)231-8415 • E-Mail:techserv@stifirestop.com • Website:www.stifirestop.com



HW-D-0365
PAGE 3 OF 3