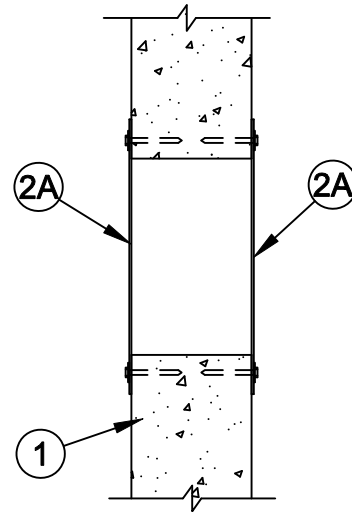
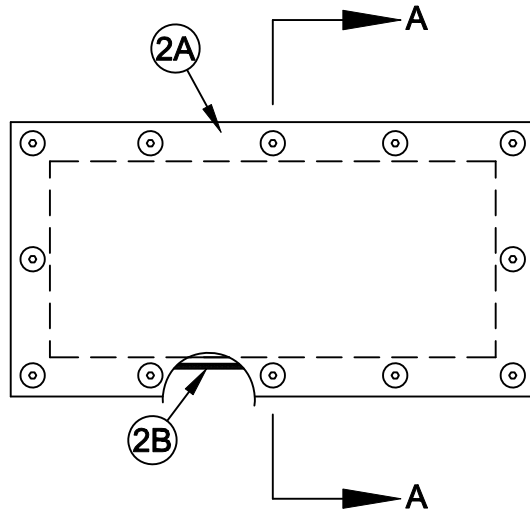




System No. W-J-0011

F Ratings - 3 and 4 Hr (See Item 1)

T Rating - 3/4 Hr



Section A-A

1. **Wall Assembly** - Min 6 in. (152 mm) thick reinforced lightweight or normal weight (100-150 pcf or 1600-2400 kg/m³) concrete. Min 7-1/2 in. (191 mm) thick reinforced lightweight or normal weight (100-150 pcf or 1600-2400 kg/m³) concrete required for 4 hr F Rating. Wall may also be constructed of any UL Classified **Concrete Blocks***. Max area of opening is 240 sq in. (0.15 m²) with max dimension of 24 in. (610 mm).

See **Concrete Blocks** (CAZT) category in the Fire Resistance Directory for names of manufacturers.

2. **Firestop System** - The firestop system shall consist of the following:

- A. **Fill, Void or Cavity Materials* - Composite Sheet** - Foil-faced sheet with galv steel sheet backer installed as one solid sheet. Sheets cut to lap min of 2 in. (51 mm) on the wall on all sides of opening. Sheets to be installed on each side of wall with foil facing against wall surface and secured with min 3/16 in. (5 mm) diam by 1-1/4 in. (32 mm) long steel concrete screws in conjunction with min 1-1/4 in. (32 mm) diam steel fender washers. Spacing of fasteners not to exceed 6 in. (152 mm) OC.

SPECIFIED TECHNOLOGIES INC - SpecSeal CS Composite Sheet

- B. **Fill, Void or Cavity Materials* - Putty or Sealant** - Nom 3/16 in. (5 mm) wide by 3/16 in. (5 mm) thick putty strips or nom 1/4 in. (6 mm) diam bead of sealant applied beneath composite sheet around entire perimeter of through opening on both sides of the wall.

SPECIFIED TECHNOLOGIES INC - SpecSeal Putty, SpecSeal Series SSS Sealant or SpecSeal LCI Sealant

*Bearing the UL Classification Mark



Specified Technologies Inc. 210 Evans Way Somerville, NJ 08876

Reproduced courtesy of Underwriters Laboratories, Inc.

Created or Revised: January 2, 2009

(800)992-1180 • (908)526-8000 • FAX (908)231-8415 • E-Mail:techserv@stifirestop.com • Website:www.stifirestop.com



W-J-0011
PAGE 1 OF 1