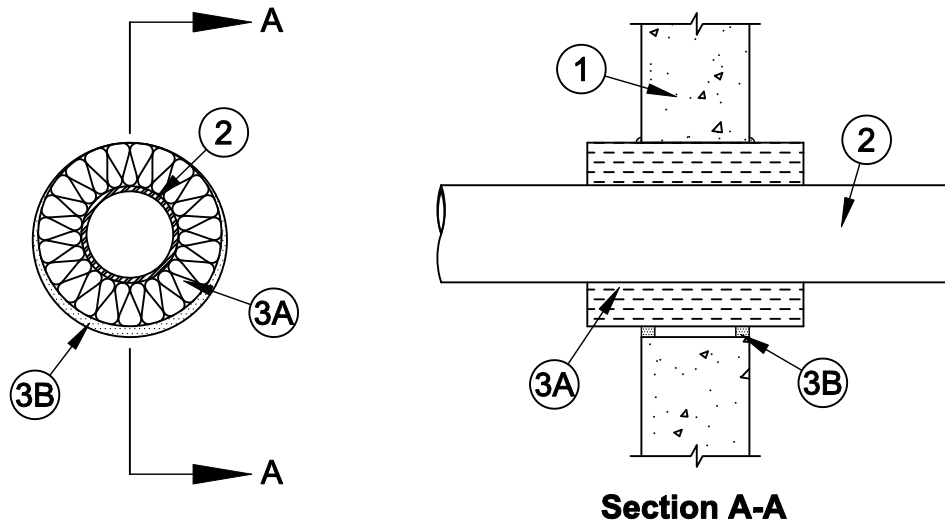


System No. W-J-1035

F Rating - 2 Hr
T Rating - 0 Hr



- Wall Assembly** - Min 5 in. thick reinforced lightweight or normal weight (100-150 pcf) concrete. Wall may also be constructed of any UL Classified **Concrete Blocks***. Max diam of opening is 9 in.
See **Concrete Blocks** (CAZT) category in the Fire Resistance Directory for names of manufacturers.
- Through Penetrants** - One metallic pipe or tubing to be installed either concentrically or eccentrically within the firestop system. Pipe or tubing to be rigidly supported on both sides of wall assembly. The following types and sizes of metallic pipes or tubing may be used:
 - Steel Pipe** - Nom 4 in. diam (or smaller) Schedule 10 (or heavier) steel pipe.
 - Iron Pipe** - Nom 4 in. diam (or smaller) cast or ductile iron pipe.
 - Copper Tubing** - Nom 4 in. diam (or smaller) Type L (or heavier) copper tubing.
 - Copper Pipe** - Nom 4 in. diam (or smaller) Regular (or heavier) copper pipe.
- Firestop System** - The firestop system shall consist of the following:
 - Pipe and Equipment Covering Materials*** - Max 2 in. thick hollow cylindrical heavy density (min 3.5 pcf) glass fiber units jacketed on the outside with an all service jacket. Longitudinal joints sealed with metal fasteners or factory-applied self-sealing lap tape. Pipe covering to be wrapped around the through penetrant and extend a min 2-1/2 in. beyond both surfaces of the wall. The annular space between pipe covering and the edge of the through opening shall be min 0 in. (continuous point contact) to max 1/2 in.
See **Pipe and Equipment Covering - Materials** (BRGU) category in the Building Materials Directory for names of manufacturers. Any pipe covering material meeting the above specifications and bearing the UL Classification Marking with a Flame Spread Index of 25 or less and a Smoke Developed Index of 50 or less may be used.
 - Fill, Void or Cavity Material* - Sealant** - Min 5/8 in. thickness of fill material applied within annulus, flush with both surfaces of wall. A min 1/4 in. crown of fill material shall be applied to the pipe covering/concrete interface at the point contact location and lapping 1/4 in. beyond the periphery of the opening on both sides of the wall.

SPECIFIED TECHNOLOGIES INC - SpecSeal Series SSS Sealant or SpecSeal LCI Sealant

*Bearing the UL Classification Mark



Specified Technologies Inc. 210 Evans Way Somerville, NJ 08876

Reproduced courtesy of Underwriters Laboratories, Inc.
Created or Revised: January 2, 2009

(800)992-1180 • (908)526-8000 • FAX (908)231-8415 • E-Mail:techserv@stifirestop.com • Website:www.stifirestop.com



W-J-1035
PAGE 1 OF 1