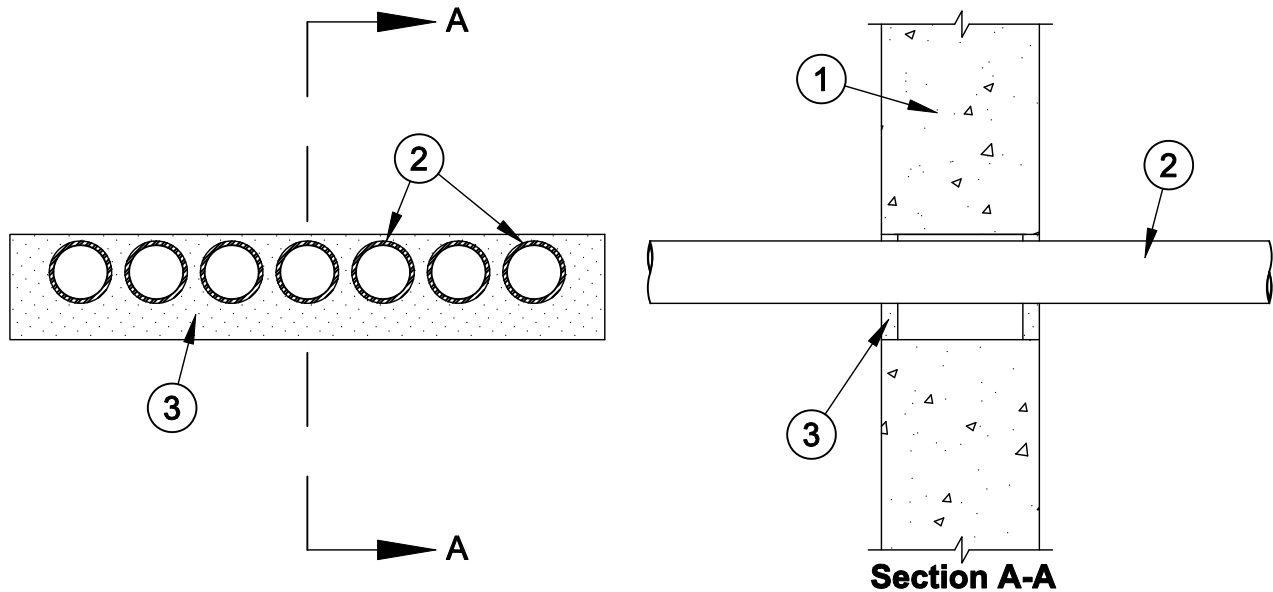




System No. W-J-1053

F Rating - 2 Hr
T Rating - 3/4 Hr



- 1. Wall Assembly** - Min 6 in. thick reinforced lightweight or normal weight (100-150 pcf) concrete. Wall may also be constructed of any UL Classified **Concrete Blocks***. Max area of opening is 90-1/2 sq in. with max dimensions of 22-5/8 in.

See **Concrete Blocks** (CAZT) category in the Fire Resistance Directory for names of manufacturers.

- 2. Through Penetrants** - One or more pipes, conduits or tubing to be installed within the opening. The space between pipes, conduits or tubing shall be a nom 1/2 in. The space between pipes, conduits or tubing and periphery of opening shall be min 1/4 in. to max 1-5/16 in. Pipe, conduit or tubing to be rigidly supported on both sides of wall assembly. The following types and sizes of pipes, conduits or tubing may be used:

- A. Steel Pipe** - Nom 2 in. diam (or smaller) Schedule 10 (or heavier) steel pipe.
- B. Iron Pipe** - Nom 2 in. diam (or smaller) cast or ductile iron pipe.
- C. Conduit** - Nom 2 in. diam (or smaller) steel electrical metallic tubing or galv steel conduit.

- 3. Fill, Void or Cavity Material* - Sealant** - Min 5/8 in. thickness of fill material applied within annulus, flush with both surfaces of wall.

SPECIFIED TECHNOLOGIES INC - SpecSeal Series SSS Sealant or SpecSeal LCI Sealant

*Bearing the UL Classification Mark



Specified Technologies Inc. 210 Evans Way Somerville, NJ 08876

Reproduced courtesy of Underwriters Laboratories, Inc.
Created or Revised: January 2, 2009

(800)992-1180 • (908)526-8000 • FAX (908)231-8415 • E-Mail:techserv@stifirestop.com • Website:www.stifirestop.com



W-J-1053
PAGE 1 OF 1