



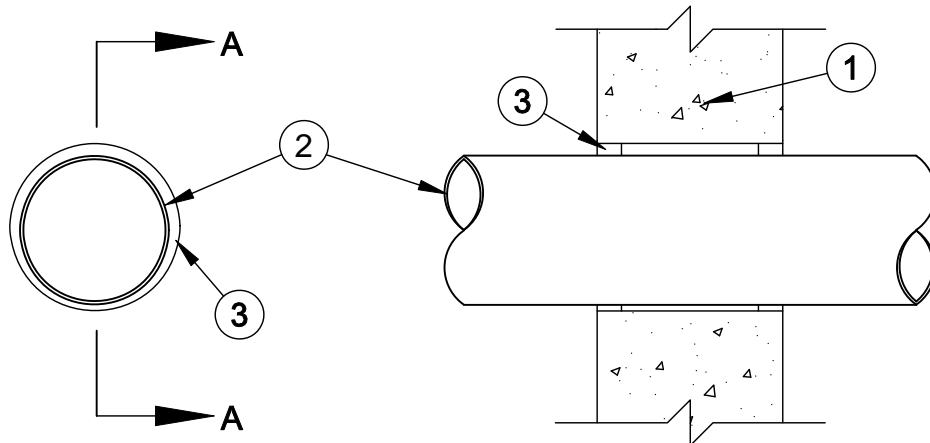
System No. W-J-1071

F Rating - 4 Hr

T Rating - 0 Hr

L Rating At Ambient - Less than 1 CFM/sq ft

L Rating At 400 F - Less than 1 CFM/sq ft



Section A-A

1. **Wall Assembly** - Min 7-5/8 in. thick reinforced lightweight or normal weight (100-150 pcf) concrete wall assembly. Wall may also be constructed of any UL Classified **Concrete Blocks***. Max diam of opening is 13-1/2 in.

See **Concrete Blocks** (CAZT) category in the Fire Resistance Directory for names of manufacturers.

2. **Through Penetrants** - One metallic pipe, conduit or tubing to be installed either concentrically or eccentrically within the firestop system. The annular space between the pipe, conduit or tubing and the periphery of the opening shall be min 1/4 in. to max 1/2 in. Pipe, conduit or tubing to be rigidly supported on both sides of floor or wall assembly. The following types and sizes of metallic pipes, conduits or tubing may be used:

A. **Steel Pipe** - Nom 12 in. diam (or smaller) Schedule 10 (or heavier) steel pipe.

B. **Iron Pipe** - Nom 12 in. diam (or smaller) cast or ductile iron pipe.

C. **Conduit** - Nom 6 in. diam (or smaller) rigid steel conduit, nom 4 in. diam (or smaller) electrical metallic tubing or nom 1 in. diam (or smaller) flexible steel conduit.

D. **Copper Tubing** - Nom 6 in. diam (or smaller) Type M (or heavier) copper tubing.

E. **Copper Pipe** - Nom 6 in. diam (or smaller) Regular (or heavier) copper pipe.

3. **Fill, Void or Cavity Material* - Sealant** - Min 1 in. thickness of fill material applied within the annulus, flush with both surfaces of wall.

SPECIFIED TECHNOLOGIES INC - SpecSeal Series SSS Sealant or SpecSeal LCI Sealant

*Bearing the UL Classification Mark



Specified Technologies Inc. 210 Evans Way Somerville, NJ 08876

Reproduced courtesy of Underwriters Laboratories, Inc.

Created or Revised: January 2, 2009

(800)992-1180 • (908)526-8000 • FAX (908)231-8415 • E-Mail:techserv@stifirestop.com • Website:www.stifirestop.com



W-J-1071
PAGE 1 OF 1