



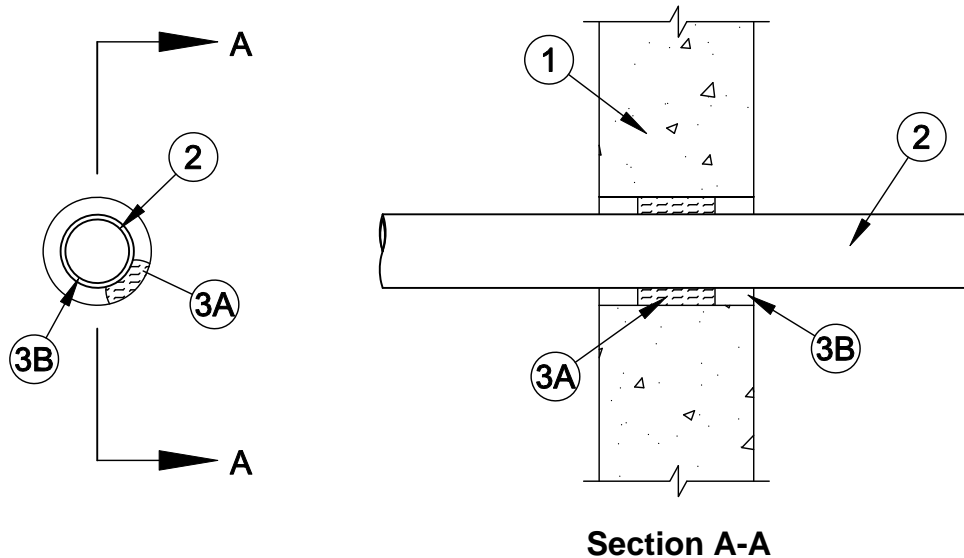
System No. W-J-2013

F Rating - 2 Hr

T Rating - 2 Hr

L Rating At Ambient - Less Than 1 CFM/sq ft

L Rating At 400 F - Less Than 1 CFM/sq ft



- 1. Wall Assembly** - Min 5 in. thick reinforced lightweight or normal weight (100-150 pcf) concrete. Wall may also be constructed of any UL Classified **Concrete Blocks***. Max diam of opening is 3-1/2 in.
See **Concrete Blocks** (CAZT) category in the Fire Resistance Directory for names of manufacturers.
- 2. Nonmetallic Pipes** - One nonmetallic pipe to be centered within the firestop system. A nom annular space of 9/16 in. is required within the firestop system. Pipe to be rigidly supported on both sides of the wall assembly. The following types and sizes of metallic pipes may be used:
 - A. Polyvinyl Chloride (PVC) Pipe** - Nom 2 in. diam (or smaller) Schedule 40 PVC pipe for use in closed (process or supply) piping systems.
 - B. Chlorinated Polyvinyl Chloride (PVC) Pipe** - Nom 2 in. diam (or smaller) SDR 17 CPVC pipe for use in closed (process of supply) piping systems.
- 3. Firestop System** - The firestop system shall consist of the following:
 - A. Packing Material** - Min 2-1/2 in. thickness of min 3.5 pcf fiberglass insulation wrapped around through penetrant and secured together by means of No. 24 AWG steel tie wire. Packing material shall be centered at mid-depth of opening and recessed from both surfaces of wall as required to accommodate the required thickness of fill material.
 - B. Fill, Void or Cavity Material* - Caulk** - Min 1-1/4 in. thickness of fill material applied within the annulus, flush with both surfaces of wall.

SPECIFIED TECHNOLOGIES INC - SpecSeal Series SSS Sealant or SpecSeal LCI Sealant

*Bearing the UL Classification Mark



Specified Technologies Inc. 210 Evans Way Somerville, NJ 08876

Reproduced courtesy of Underwriters Laboratories, Inc.

Created or Revised: January 2, 2009

(800)992-1180 • (908)526-8000 • FAX (908)231-8415 • E-Mail:techserv@stifirestop.com • Website:www.stifirestop.com



W-J-2013
PAGE 1 OF 1