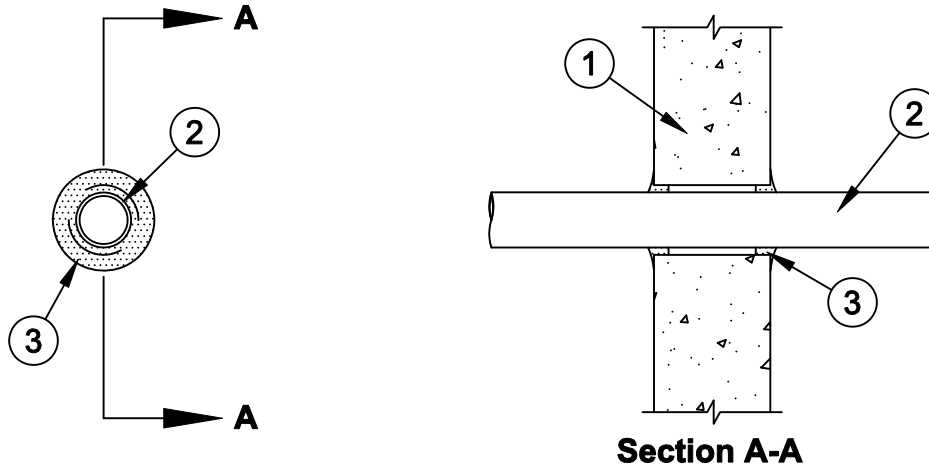


System No. W-J-2018

F Rating - 2 Hr

T Ratings - 1 and 1-1/2 Hr (See Item 2)



1. **Wall Assembly** - Min 5 in. thick reinforced lightweight or normal weight (100-150 pcf) concrete. Wall may also be constructed of any UL Classified **Concrete Blocks***. Max diam of opening is 3 in.
See **Concrete Blocks (CAZT)** category in the Fire Resistance Directory for names of manufacturers.
2. **Through Penetrants** - One nonmetallic pipe, conduit or raceway to be centered within the firestop system. A nom annular space of 5/16 in. is required within the firestop system. Pipe, conduit or raceway to be rigidly supported on both sides of the floor or wall assembly. The following types and sizes of nonmetallic pipes, conduits or raceway may be used:
 - A. **Polyvinyl Chloride (PVC) Pipe** - Nom 2 in. diam (or smaller) Schedule 40 cellular or solid core PVC pipe for use in closed (process or supply) piping systems.
 - B. **Rigid Nonmetallic Conduit+** - Nom 2 in. diam (or smaller) Schedule 40 PVC conduit installed in accordance with Article 347 of the National Electrical Code (NFPA No. 70). See **Rigid Nonmetallic Conduit (DZYR)** category in the **Electrical Construction Materials Directory** for names of manufacturers.
 - C. **Chlorinated Polyvinyl Chloride (CPVC) Pipe** - Nom 2 in. diam (or smaller) SDR17 CPVC pipe for use in closed (process or supply) piping systems.
 - D. **Optical Fiber Raceway+** - Nom 2 in. diam (or smaller) optical fiber raceway formed from polyvinyl chloride (PVC) or nom 1-1/4 in. diam (or smaller) optical fiber raceway formed from polyvinylidene fluoride (PVDF). Raceway to be installed in accordance with Article No. 770 of the National Electrical Code.
See **Optical Fiber Raceway (QAZM)** category in the Electrical Construction Materials Directory for names of manufacturers.
 - E. **Electrical Nonmetallic Tubing+** - Nom 2 in. diam (or smaller) PVC tubing installed in accordance with Article 331 of the National Electrical Code (NFPA No. 70). See **Electrical Nonmetallic Tubing (FKHU)** category in the Electrical Construction Materials Directory for names of manufacturers.

The hourly T Rating of the firestop system is dependent upon the diam of the raceway as shown below:

Max Diam of Thought Penetrant, In.	T Rating, Hr
2	1
1-1/4	1-1/2

3. **Fill, Void or Cavity Material* - Sealant** - Min 5/8 in. thickness of fill material within annulus, flush with both surfaces of wall. Additional fill material installed such that a min 1/4 in. thick crown is formed around the penetrating item lapping 1 in. beyond the periphery of the opening.

SPECIFIED TECHNOLOGIES INC - SpecSeal Series SSS Sealant or SpecSeal LCI Sealant

+Bearing the UL Listing Mark

*Bearing the UL Classification Mark



Specified Technologies Inc. 210 Evans Way Somerville, NJ 08876

Reproduced courtesy of Underwriters Laboratories, Inc.

Created or Revised: January 2, 2009

(800)992-1180 • (908)526-8000 • FAX (908)231-8415 • E-Mail:techserv@stifirestop.com • Website:www.stifirestop.com

