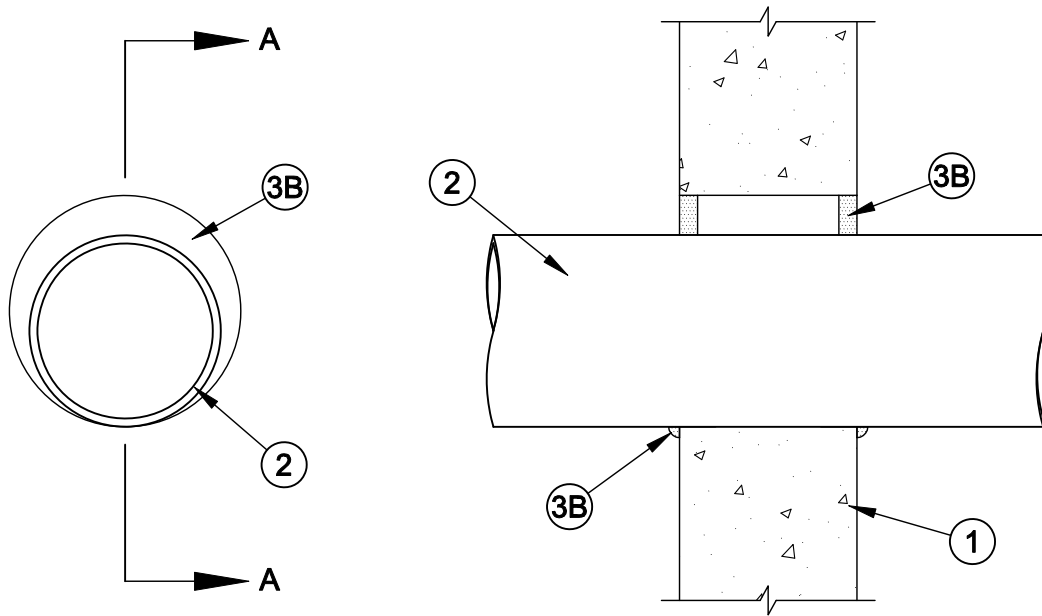




System No. W-J-2032

F Rating - 2 Hr
T Rating - 1/4 Hr



Section A-A

1. **Wall Assembly** - Min 6 in. thick reinforced lightweight or normal weight (100-150 pcf) concrete. Wall may also be constructed of any UL Classified **Concrete Blocks***. Max diam of opening is 8 in.
See **Concrete Blocks** (CAZT) category in the Fire Resistance Directory for names of manufacturers.
2. **Through Penetrant* - Glass Pipe** - Nom 6 in. diam (or smaller) glass pipe for use in closed (process or supply) or vented (drain, waste, or vent) piping systems. One pipe to be installed concentrically or eccentrically within the firestop system. Annular space to be min 0 in. (point contact) to max 1-3/8 in. Pipe coupling to be located min 12 in. from wall surfaces. Pipe to be rigidly supported on both sides of wall assembly.

SCHOTT NORTH AMERICA INC

3. **Firestop System** - The firestop system shall consist of the following:
 - A. **Packing Material - Pipe and Equipment Covering Materials*** - (Optional, Not Shown) - Foam backer rod, mineral wool batt insulation or glass fiber insulation packed into opening and recessed min 5/8 in. from each surface of the wall to accommodate the fill material.
 - B. **Fill, Void or Cavity Material* - Sealant** - Min 5/8 in. thickness of fill material applied within annulus, flush with both surfaces of wall.

SPECIFIED TECHNOLOGIES INC - SpecSeal Series SSS Sealant or SpecSeal LCI Sealant

*Bearing the UL Classification Mark



Specified Technologies Inc. 210 Evans Way Somerville, NJ 08876

Reproduced courtesy of Underwriters Laboratories, Inc.
Created or Revised: January 2, 2009

(800)992-1180 • (908)526-8000 • FAX (908)231-8415 • E-Mail:techserv@stifirestop.com • Website:www.stifirestop.com



W-J-2032
PAGE 1 OF 1