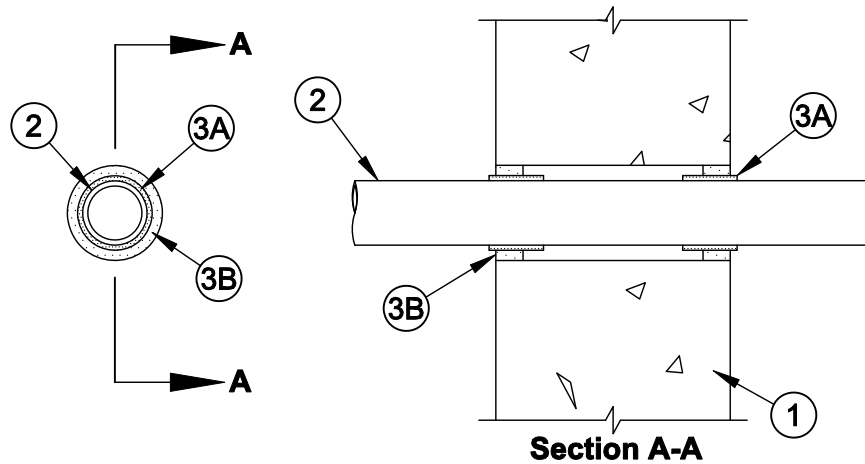




System No. W-J-2085

F Rating - 4 Hr

T Rating - 4 Hr



1. **Wall Assembly** - Min 7-5/8 in. (194 mm) thick reinforced lightweight or normal weight (100-150 pcf or 1600-2400 kg/m³) concrete. Wall may also be constructed of any UL Classified **Concrete Blocks***. Max diam of opening is 3-1/2 in. (89 mm).

See **Concrete Blocks** (CAZT) category in the Fire Resistance Directory for names of manufacturers.

2. **Through Penetrants** - One nonmetallic pipe or conduit to be centered within the firestop system. The annular space shall be nom 1/2 in. (13 mm). Pipe or conduit to be rigidly supported on both sides of the wall assembly. The following types and sizes of nonmetallic pipes or conduits may be used:
 - A. **Polyvinyl Chloride (PVC) Pipe** - Nom 2 in. (51 mm) diam (or smaller) Schedule 40 cellular or solid core PVC pipe for use in closed (process or supply) or vented (drain, waste or vent) piping systems.
 - B. **Chlorinated Polyvinyl Chloride (CPVC) Pipe** - Nom 2 in. (51 mm) diam (or smaller) SDR13.5 CPVC pipe for use in closed (process or supply) piping systems.
 - C. **Rigid Nonmetallic Conduit+** - Nom 2 in. (51 mm) diam (or smaller) Schedule 40 PVC conduit installed in accordance with Article 347 of the National Electrical Code (NFPA No. 70).
 - D. **Acrylonitrile Butadiene Styrene (ABS) Pipe** - Nom 2 in. (51 mm) diam (or smaller) Schedule 40 cellular or solid core ABS pipe for use in closed (process or supply) or vented (drain, waste or vent) piping systems.
 - E. **Flame Retardant Polypropylene (FRPP) Pipe** - Nom 2 in. (51 mm) diam (or smaller) Schedule 40 FRPP pipe for use in closed (process or supply) or vented (drain, waste or vent) piping systems.
 - F. **Polypropylene (PP) Pipe** - Nom 1 in. (25 mm) diam (or smaller) Schedule 80 PP pipe for use in closed (process or supply) piping systems.
3. **Firestop System** - The firestop system shall consist of the following:
 - A. **Fill, Void or Cavity Material* - Wrap Strip** - Nom 1/8 or 3/16 in. (3.2 or 4.8 mm) thick intumescent material faced on both sides with a plastic film, supplied in 2 in. (51 mm) wide strips. Single layer of wrap strip wrapped around the through penetrant with the ends butted and held in place by means of foil tape. The wrap strip is slid along the through penetrant into annulus such that 1/4 in. (6 mm) of the wrap strip protrudes from the wall. One set of wrap strips to be installed on each side of wall.

SPECIFIED TECHNOLOGIES INC - SpecSeal BLU Wrap Strip or SpecSeal BLU2 Wrap Strip
 - B. **Fill, Void or Cavity Material* - Sealant** - A min 1/2 in. (13 mm) thickness of fill material applied within the annulus, flush with both surfaces of wall.

SPECIFIED TECHNOLOGIES INC - SpecSeal Series SSS Sealant or SpecSeal LCI Sealant

*Bearing the UL Classification Mark



Specified Technologies Inc. 210 Evans Way Somerville, NJ 08876

Reproduced courtesy of Underwriters Laboratories, Inc.

Created or Revised: January 2, 2009

(800)992-1180 • (908)526-8000 • FAX (908)231-8415 • E-Mail:techserv@stfirestop.com • Website:www.stfirestop.com



W-J-2085
PAGE 1 OF 1