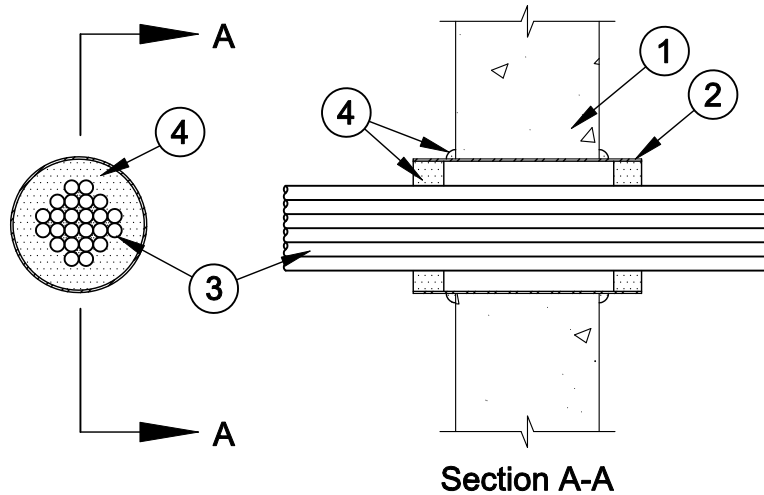




System No. W-J-3043

F Rating - 2 Hr
T Rating - 0 Hr



1. **Wall Assembly** - Min 6 in. thick lightweight or normal weight (100-150 pcf) concrete. Wall may also be constructed of any UL Classified **Concrete Blocks***. Max diam of opening is 4-1/2 in.
See Concrete Blocks* (CAZT) category in the Fire Resistance Directory for names of manufacturers.
2. **Steel Sleeve** - Nom 4 in. diam (or smaller) steel electrical metallic tubing (EMT) or Schedule 5 (or heavier) steel pipe cast or grouted into wall assembly. Sleeve installed such that the ends project 1-1/2 to 2 in. beyond each side of the wall.
3. **Cables** - Aggregate cross-sectional area of cables in sleeve to be max 48 percent of the cross-sectional area of the sleeve. Tight bundle of cables to be centered within the steel sleeve. The annular space within the firestop system shall be a nom 1/2 in. Cables to be rigidly supported on both sides of the wall. Any combination of the following types and sizes of cables may be used:
 - A. Max 200 pair No. 24 AWG (or smaller) copper conductor cable with poluvinyl chloride (PVC) jacketing and insulation.
 - B. Max 3/C No. 2/0 AWG (or smaller) aluminum or copper conductor service entrance cable with PVC insulation and jacket.
 - C. Max 3/C No. 8 AWG (or smaller) nonmetallic sheathed (Romex) cable with copper conductors, PVC insulation and jacket.
 - D. Max 7/C No. 2/0 AWG (or smaller) multiconductor power and control cables with XLPE or PVC insulation and XLPE or PVC jacket.
 - E. Max RG59/U (or smaller) coaxial cable with fluorinated ethylene insulation and jacketing.
 - F. Max 62.5/48 fiber optic cable with PVC insulation and jacketing.
 - G. Max 4 pair No. 24 AWG (or smaller) copper conductor data cable with Hylar insulation and jacket.
4. **Fill, Void or Cavity Material* - Putty** - Min 1 in. thickness of fill material applied with annulus, flush with both ends of sleeve. A nom 1/4 in. diam continuous "rope" of putty shall be applied around the circumference of the steel sleeve at its egress from both sides of the wall.
SPECIFIED TECHNOLOGIES INC - SpecSeal Putty
5. **Fill, Void or Cavity Material* - Sealant** - As an option to the "rope" of putty, a min 1/4 in. diam bead of sealant may be applied at the wall/steel sleeve interface on both sides of the wall.
SPECIFIED TECHNOLOGIES INC - SpecSeal Series SSS Sealant, SpecSeal LCI Sealant or Series LC Sealant

*Bearing the UL Classification Mark



Specified Technologies Inc. 210 Evans Way Somerville, NJ 08876

Reproduced courtesy of Underwriters Laboratories, Inc.
Created or Revised: January 2, 2009

(800)992-1180 • (908)526-8000 • FAX (908)231-8415 • E-Mail:techserv@stifirestop.com • Website:www.stifirestop.com



W-J-3043
PAGE 1 OF 1