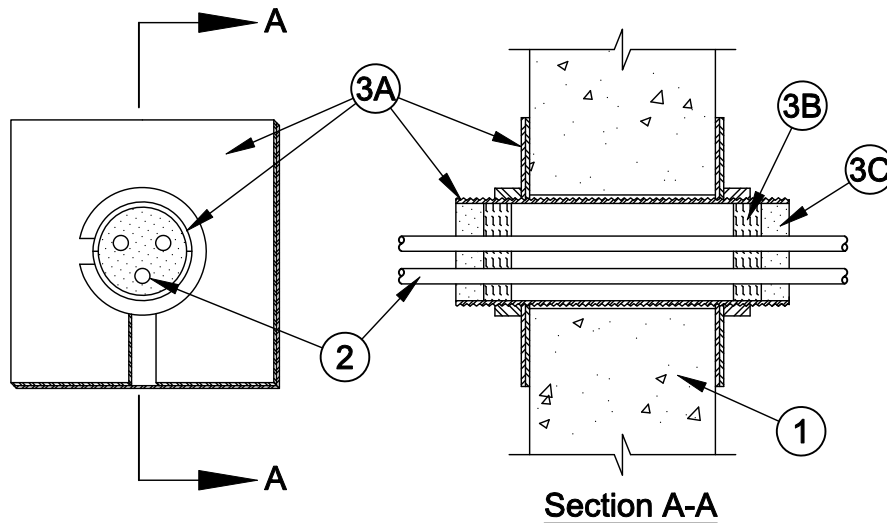




### System No. W-J-3047

F Rating - 2 Hr  
T Rating - 0 Hr



- Wall Assembly** - Min 6 in. thick reinforced lightweight or normal weight (100-150 pcf) concrete. Wall may also be constructed of any UL Classified **Concrete Blocks\***.

See **Concrete Blocks** (CAZT) category in the Fire Resistance Directory for names of manufacturers.

- Cables** - Aggregate cross-sectional area of cables in Split Sleeve to be min 8 percent to max 48 percent of the aggregate cross-sectional area of the Split Sleeve. Cables to be rigidly supported on both sides of wall assembly. Any combination of the following types and sizes of cables may be used:

- A. Max 200 pair No. 24 AWG (or smaller) copper conductor cable with polyvinyl chloride (PVC) jacketing and insulation.
- B. Max 1/C, 750 kcmil power cable with copper conductors and cross-linked polyethylene (XLPE) jacketing.
- C. Max 3/C No. 2/0 AWG (or smaller) aluminum or copper conductor service entrance cable with PVC insulation and jacket.
- D. Max 3/C No. 8 AWG (or smaller) nonmetallic sheathed (Romex) cable with copper conductors, PVC insulation and jacket.
- E. Max 7/C No. 12 AWG (or smaller) multiconductor power and control cables with XLPE or PVC insulation and XLPE or PVC jacket.
- F. Max RG59/U (or smaller) coaxial cable with fluorinated ethylene insulation and jacketing.
- G. Max 62.5/48 fiber optic cable with PVC insulation and jacketing.
- H. Max 4 pair No. 24 AWG (or smaller) copper conductor category 5 with Hylar insulation and jacket.

- Firestop System** - The firestop system shall consist of the following:

- A. **Firestop Device\*** - Threaded steel sleeve halves incorporating split nuts and split washers sized to fit the specific diam of the opening. Device shall be installed around cables in accordance with the accompanying installation instructions. Device provided in nom 1, 2 and 4 in. sizes. Max diam of opening in wall for 1, 2 and 4 in. size devices are 1-1/4, 2-7/16 and 4-1/2 in. respectively.

**UNIQUE FIRE STOP PRODUCTS INC** - Split Sleeve

- B. **Fill, Void or Cavity Material\* - Sealant or Putty** - Min 1 in. thickness of fill material applied within the Split Sleeve, flush with each end.

**SPECIFIED TECHNOLOGIES INC** - SpecSeal Series SSS Sealant, SpecSeal LCI Sealant or SpecSeal Putty

\*Bearing the UL Classification Mark



**Specified Technologies Inc. 210 Evans Way Somerville, NJ 08876**

Reproduced courtesy of Underwriters Laboratories, Inc.  
Created or Revised: January 2, 2009

(800)992-1180 • (908)526-8000 • FAX (908)231-8415 • E-Mail:techserv@stifirestop.com • Website:www.stifirestop.com



W-J-3047  
PAGE 1 OF 1