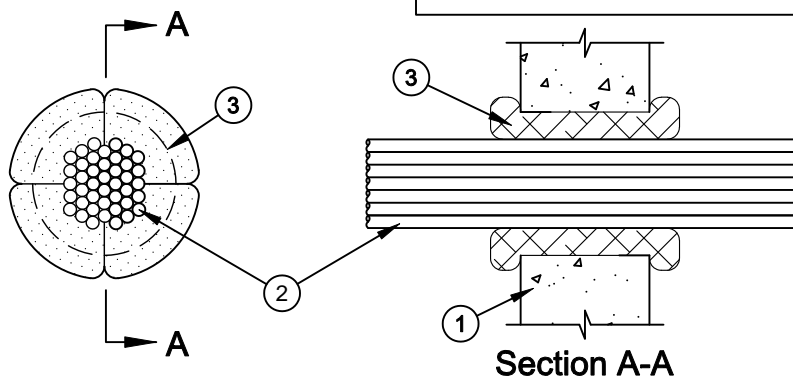


System No. W-J-3140



ANSI/UL1479 (ASTM E814)	CAN/ULC S115
F Ratings - 2 Hr	F Ratings - 2 Hr
T Ratings - 1/2 and 3/4 Hr (See Item 2)	FT Ratings - 1/2 and 3/4 Hr (See Item 2)
L Rating At Ambient - 1.6 CFM/sq ft	FH Ratings - 2 Hr
L Rating at 400 F - 1.6 CFM/sq ft	FTH Ratings - 1/2 and 3/4 Hr (See Item 2)
	L Rating At Ambient - 1.6 CFM/sq ft
	L Rating at 400 F - 1.6 CFM/sq ft



1. **Wall Assembly** - Min 6 in. (152 mm) thick reinforced lightweight or normal weight (100-150 pcf or 1600-2400 kg/m³) concrete wall. Wall may also be constructed of any UL Classified **Concrete Blocks***. Max diam of opening is 6 in. (152 mm). See **Concrete Blocks (CAZT)** category in the Fire Resistance Directory for names of manufacturers.
2. **Cables** - Aggregate cross-sectional area of cables in opening to be max 33 percent of the cross-sectional area of the opening. Cables to be tightly bundled and centered within the opening. The annular space within the firestop system shall be nom 2 in. (51 mm). Cables to be rigidly supported on both sides of the wall. Any combination of the following types and sizes of cables may be used:
 - A. Max 300 pair No. 24 AWG (or smaller) copper conductor cable with polyvinyl chloride (PVC) or plenum rated jacketing and insulation.
 - B. Max 1/C, 750 kcmil power cable with copper conductors and cross-linked polyethylene (XLPE) or plenum rated jacketing.
 - C. Max 3/C No. 2/0 AWG (or smaller) aluminum or copper conductor service entrance cable with PVC or plenum rated insulation and jacket.
 - D. Max 3/C No. 8 AWG (or smaller) nonmetallic sheathed (Romex) cable with copper conductors, PVC or plenum rated insulation and jacket.
 - E. Max 7/C No. 2/0 AWG (or smaller) multiconductor power and control cables with XLPE, PVC or plenum rated insulation and XLPE or PVC jacket.
 - F. Max RG59/U (or smaller) coaxial cable with fluorinated ethylene or plenum rated insulation and jacketing.
 - G. Max 62.5/48 fiber optic cable with PVC or plenum rated insulation and jacketing.
 - H. Max 4/C No. 2/0 (or smaller) aluminum or copper conductor aluminum or steel Metal-Clad# or Armored-Clad# cable.
 - I. Max 4 pair No. 24 AWG (or smaller) copper conductor Category 5 cable with hylar or plenum rated insulation and jacket.

The T, FT and FTH Ratings are 1/2 hr when Item 2B is used; otherwise the T, FT and FTH Ratings are 3/4 hr.
3. **Fill, Void or Cavity Material* - Pillows** - Max 9 in. (229 mm) long by 6 in. (152 mm) wide by 3 in. (76 mm) thick plastic covered intumescent pillows installed within opening. Pillows tightly packed into opening to fill annular space between cables and concrete.
SPECIFIED TECHNOLOGIES INC - SpecSeal Pillows
4. **Fill, Void or Cavity Material* - Putty or Sealant** - (Not Shown) - After installation of the pillows (Item 3), putty or sealant applied to seal any voids between the cables and between the cables and the pillows on both sides of the wall assembly.
SPECIFIED TECHNOLOGIES INC - SpecSeal Putty, SpecSeal Series SSS Sealant or SpecSeal LCI Sealant

*Bearing the UL Classification Mark

#Bearing the UL Listing Mark



Specified Technologies Inc. 210 Evans Way Somerville, NJ 08876

Reproduced courtesy of Underwriters Laboratories, Inc.

Created or Revised: September 14, 2011

(800)992-1180 • (908)526-8000 • FAX (908)231-8415 • E-Mail:techserv@stifirestop.com • Website:www.stifirestop.com



W-J-3140
PAGE 1 OF 1