



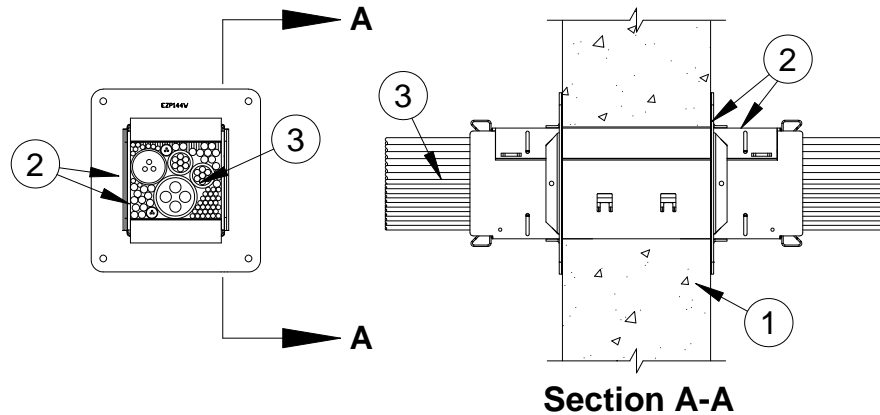
System No. W-J-3180

F Rating - 2 Hr

T Ratings - 0, 1/2, 3/4, 1, 1-1/2 and 2 Hr (See Item 3)

L Rating At Ambient - 2.3, 7.4 or 6.2 CFM (See Item 3)

L Rating At 400 F - 2.3, 4.5 or 5 CFM (See Item 3)



1. **Wall Assembly** - Min 5 in. (127 mm) thick reinforced lightweight or normal weight (100-150 pcf or 1600-2400 kg/m³) concrete wall. Wall may also be constructed of any UL Classified **Concrete Blocks***. Opening in wall to be 6 in. (152 mm) in diam or max 4-1/8 in. (105 mm) by 4-3/4 in. (121 mm).

See **Concrete Blocks** (CAZT) category in the Fire Resistance Directory for names of manufacturers.

2. **Firestop Device*** - The firestop device module consists of a 4 by 4-5/8 by 14 in. (102 by 118 by 356 mm) long galv steel tube with spring loaded steel retainer plates and an intumescent material lining. Firestop device module to be installed in accordance with the accompanying installation instructions. The space between the firestop device and the periphery of the opening shall be min 0 in. (point contact) to max 1/4 in. (6 mm). Firestop device module secured in place by means of steel wall plates installed with gasketing material supplied with product. Steel wall plates installed on both sides of wall and secured to each device by means of steel screws provided with device. Firestop device module is to be installed with ends projecting an equal distance beyond each surface of the wall assembly.

SPECIFIED TECHNOLOGIES INC - EZ PATH Series 44 Fire Rated Pathway

3. **Cables** - Within the loading area for the firestop device module, the loose or grouped cables may represent a 0 to 100 percent visual fill. Cables to be rigidly supported on both sides of the wall assembly. Any combination of the following types of cables may be used:
 - A. Max 400 pair No. 24 AWG (or smaller) copper conductor telecommunication cable with polyvinyl chloride (PVC) or plenum-rated jacketing and insulation.
 - B. Max 750 kcmil single copper conductor power cable with XLPE jacket and insulation
 - C. Max 7/C No. 12 AWG copper conductor control cable with PVC or XLPE jacket and insulation.
 - D. Max 3/C No. 2/0 AWG metal clad or armored cable with steel or aluminum jacket.
 - E. Max 3/C No. 8 AWG NM cable (Romex) with PVC insulation and jacket.
 - F. Max four pair No. 22 AWG (or smaller) copper conductor data cable with PVC or plenum rated jacketing and insulation.
 - G. Coaxial cable with fluorinated ethylene or PVC insulation and jacketing having a max diam of 5/8 in. (16 mm).



Specified Technologies Inc. 210 Evans Way Somerville, NJ 08876

Reproduced courtesy of Underwriters Laboratories, Inc.

Created or Revised: February 17, 2010

(800)992-1180 • (908)526-8000 • FAX (908)231-8415 • E-Mail:techserv@stifirestop.com • Website:www.stifirestop.com



W-J-3180
PAGE 1 OF 2

- H. Optical fiber cable with PVC or polyethylene (PE) jacket and insulation and having a max diam of 5/8 in. (16 mm).
- I. **Optical Fiber Raceway+** - Max 1-1/2 in. (38 mm) diam (or smaller) optical fiber raceway ("innerduct") formed of either PVC or polyvinylidene fluoride (PVDF) with optical fiber cable fill. Raceways installed in accordance with the National Electrical Code (NFPA 70).

When Item 3A is used, the T Rating is 1 hr. When Item 3B, 3C, 3D, or 3E is used, the T Rating is 1/2 Hr. When Item 3F or 3G is used, the T Rating is 1 and 1-1/2 Hr for 1 and 2 hr rated assemblies respectively. When Item 3H is used, the T Rating is 1 or 2 Hr for 1 and 2 hr rated assemblies respectively. When Item 3I is used, the T Rating is 3/4 Hr. When device is empty, the T Rating is 0 Hr.

The L Rating for each empty firestop device is 2.3 cfm at ambient and at 400F. When Item 3A is used, the L Rating with 100 percent visual fill of cable is 7.4 CFM/firestop device module at ambient and 5 CFM/firestop device module at 400F. When Item 3F or 3G is used, the L Rating with 100 percent visual fill of cable is 6.2 CFM/firestop device module at ambient and 4.5 CFM/firestop device module at 400F.

+Bearing the UL Listing Mark

*Bearing the UL Classification Mark



Specified Technologies Inc. 210 Evans Way Somerville, NJ 08876

Reproduced courtesy of Underwriters Laboratories, Inc.
Created or Revised: February 17, 2010

(800)992-1180 • (908)526-8000 • FAX (908)231-8415 • E-Mail:techserv@stifirestop.com • Website:www.stifirestop.com



W-J-3180
PAGE 2 OF 2