

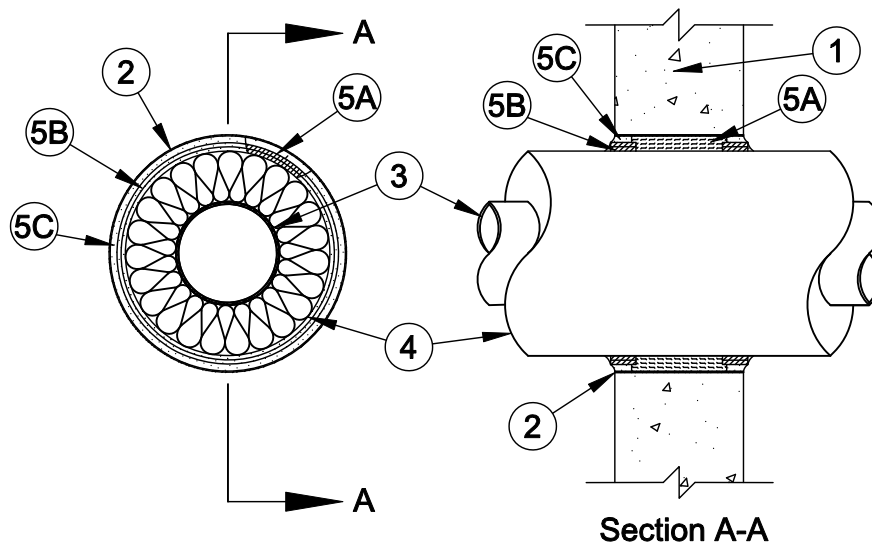
System No. W-J-5047

F Rating - 3 Hr

T Rating - 2 Hr

L Rating At Ambient - Less than 1 CFM/sq ft

L Rating At 400 F - Less than 1 CFM/sq ft



1. **Wall Assembly** - Min 7-5/8 in. thick reinforced lightweight or normal weight (100-150 pcf) concrete. Wall may also be constructed of any UL Classified **Concrete Blocks***. Max diam of opening is 14 in.
See **Concrete Blocks** (CAZT) category in the Fire Resistance Directory for names of manufacturers.
2. **Metallic Sleeve** - Max 14 in. diam cylindrical sleeve fabricated from min 0.031 in. thick (No. 22 MSG) galv sheet steel and having a min 2 in. lap along the longitudinal seam. The ends of the steel sleeve shall be installed flush with each face of the wall.
3. **Through Penetrants** - (Optional)-One metallic pipe or tubing to be centered within the firestop system. Pipe or tubing to be rigidly supported on both sides of the wall. The following types and sizes of metallic pipes or tubing may be used:
 - A. **Steel Pipe** - Nom 6 in. diam (or smaller) Schedule 10 (or heavier) steel pipe.
 - B. **Iron Pipe** - Nom 6 in. diam (or smaller) cast or ductile iron pipe.
 - C. **Copper Pipe** - Nom 6 in. diam (or smaller) Regular (or heavier) copper pipe.
 - D. **Copper Tubing** - Nom 6 in. diam (or smaller) Type L (or heavier) copper tubing.
4. **Pipe Covering*** - One of the following types of pipe coverings shall be used:
 - A. **Pipe and Equipment Covering Materials*** - Max 3 in. thick hollow cylindrical heavy density (min 3.5 pcf) glass fiber units jacketed on the outside with an all-service jacket. Longitudinal joints sealed with metal fasteners or factory-applied self-sealing lap tape. Transverse joints secured with metal fasteners or with butt tape supplied with the product. The annular space shall be a nom 15/16 in.
See **Pipe and Equipment Materials*** (BRGU) category Building Materials Directory for names of manufacturers. Any pipe covering meeting the above specifications and bearing the UL Classification marking with a Flame Spread Index of 25 or less and a Smoke Developed Index of 50 or less may be used.
 - B. **Pipe and Equipment Covering Materials*** - Max 3 in. thick unfaced mineral fiber pipe insulation having a nom density of 3.5 pcf (or heavier) and sized to fit the outside diam of pipe or tube. Pipe insulation secured with min 8 AWG steel wire spaced max 12 in. OC. The annular space between the insulated penetrating item and the periphery of the opening shall be nom 15/16 in.

IIG MINWOOL L L C - High Temperature Pipe Insulation 1200, High Temperature Pipe Insulation BWT or High Temperature Pipe Insulation Thermaloc



Specified Technologies Inc. 210 Evans Way Somerville, NJ 08876

Reproduced courtesy of Underwriters Laboratories, Inc.

Created or Revised: January 2, 2009

(800)992-1180 • (908)526-8000 • FAX (908)231-8415 • E-Mail:techserv@stifirestop.com • Website:www.stifirestop.com



W-J-5047
PAGE 1 OF 2

- C. **Sheathing Material*** - Used in conjunction with Item 4B. Foil-scrim-kraft or all-service jacket material shall be wrapped around the outer circumference of the pipe insulation (Item 4B) with the kraft side exposed. Longitudinal joints and transverse joints sealed with metal fasteners or butt tape.

See **Sheathing Materials*** (BVDV) category in the Building Materials Directory for names of manufacturers. Any pipe covering meeting the above specifications and bearing the UL Classification marking with a Flame Spread Index of 25 or less and a Smoke Developed Index of 50 or less may be used.

5. Firestop System - The firestop system shall consist of the following:

- A. **Packing Material** - Min 5-5/8 in. thickness of 4 pcf mineral wool batt insulation firmly packed into opening as a permanent form. Packing material recessed from each surface of the wall as required to accommodate the required thickness of fill material.
- B. **Fill, Void or Cavity Materials* - Wrap Strips** - Nom 1/4 or 3/16 in. thick intumescent material faced on both sides with a plastic film, supplies in 1-1/2 or 2 in. wide strips, respectively. Two layers of wrap strip individually wrapped around the insulated through penetrant with the ends butted and held in place with tape. Butted ends in successive layers to be aligned or offset. Wrap strips are slid along the through penetrant into annulus such that 1/4 in. of the wrap protrudes from the wall. One set of wrap strips to be installed on each side of the wall.

SPECIFIED TECHNOLOGIES INC - SpecSeal RED or BLU Wrap Strip

- C. **Fill, Void or Cavity Materials* - Sealant** - Min 1 in. thickness of fill material applied within annulus between wrap strips (Item 5B) and periphery of opening, flush with both surfaces of wall. Min 1/4 in. diam bead of fill material applied around circumference of pipe covering at its egress from the wrap strips on each side of the wall.

SPECIFIED TECHNOLOGIES INC - SpecSeal Series SSS Sealant or SpecSeal LCI Sealant

*Bearing the UL Classification Mark



Specified Technologies Inc. 210 Evans Way Somerville, NJ 08876

Reproduced courtesy of Underwriters Laboratories, Inc.
Created or Revised: January 2, 2009

(800)992-1180 • (908)526-8000 • FAX (908)231-8415 • E-Mail:techserv@stifirestop.com • Website:www.stifirestop.com



W-J-5047
PAGE 2 OF 2