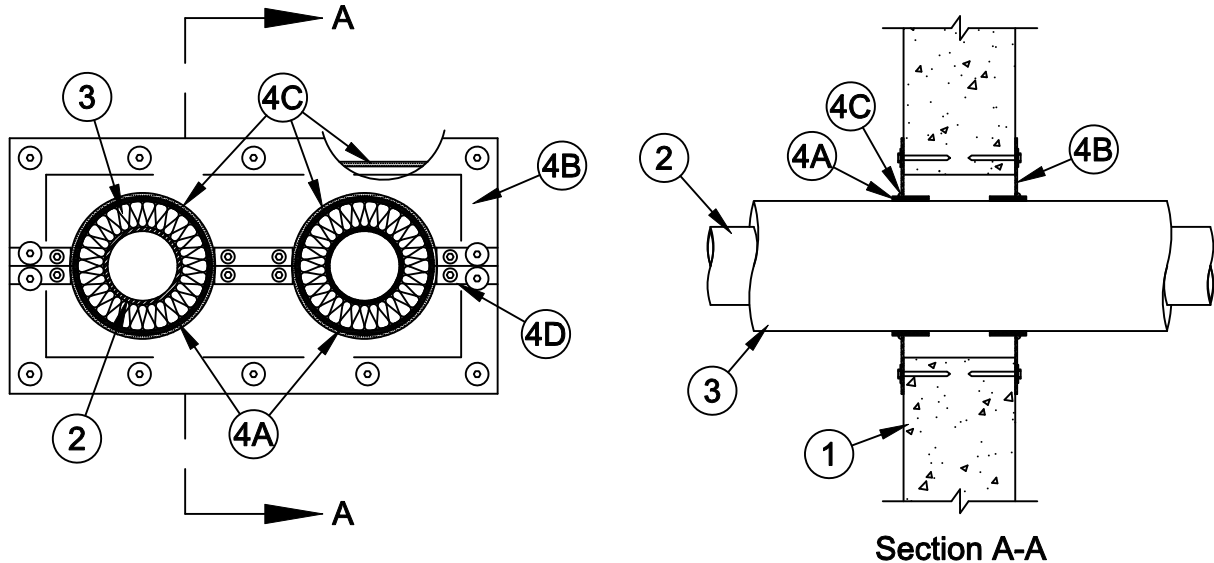




System No. W-J-5124

F Rating - 2 Hr
T Rating - 3/4 Hr



- Wall Assembly** - Min 6 in. (152 mm) thick reinforced lightweight or normal weight (100-150 pcf or 1600-2400 kg/m³) concrete. Wall may also be constructed of any UL Classified **Concrete Blocks***. Max area of opening is 240 sq in. (0.15 m²) with max dimensions of 24 in. (610mm).

See **Concrete Blocks** (CAZT) category in the Fire Resistance Directory for names of manufacturers.

- Metallic Penetrants** - One or more metal pipes or tubing installed within the through opening. The space between the insulated pipes or tubing shall be min 3 in. (76 mm). The space between the insulated pipes or tubing and periphery of opening shall be min 1 in. (25 mm). Pipe or tubing to be rigidly supported on both sides of wall assembly. The following types and sizes of metallic pipes or tubing may be used:

A. **Steel Pipe** - Nom 3 in. (76 mm) diam (or smaller) Schedule 5 (or heavier) steel pipe.

B. **Iron Pipe** - Nom 3 in. (76 mm) diam (or smaller) cast or ductile iron pipe.

C. **Copper Pipe or Tube** - Nom 3 in. (76 mm) diam (or smaller) Regular (or heavier) copper pipe or Type L (or heavier) copper tube.

- Pipe Insulation** - The following types of pipe insulations may be used:

A. **Pipe and Equipment Covering Materials*** - Nom 2 in. (51 mm) thick hollow cylindrical heavy density (min 3.5 pcf or 56 kg/m³) glass fiber units jacketed on the outside with an all service jacket. Longitudinal joints sealed with metal fasteners or factory-applied self-sealing lap tape. Transverse joints secured with metal fasteners or with butt tape supplied with the product.

See **Pipe and Equipment Covering Materials** (BRGU) category in the Building Materials Directory for names of manufacturers. Any pipe covering meeting the above specifications and bearing the UL Classification Marking with a Flame Spread Index of 25 or less and a Smoke Developed Index of 50 or less may be used.

B. **Pipe Covering Materials*** - Nom 2 in. (51 mm) thick unfaced mineral fiber pipe insulation having a min density of 3.5 pcf (56 kg/m³) and sized to the outside diam of the pipe or tube. Pipe insulation secured with min 18 AWG steel wire spaced max 12 in. (305 mm) OC.

IIG MINWOOL L L C - High Temperature Pipe Insulation 1200, High Temperature Pipe Insulation BWT and High Temperature Pipe Insulation Thermaloc



Specified Technologies Inc. 210 Evans Way Somerville, NJ 08876

Reproduced courtesy of Underwriters Laboratories, Inc.
Created or Revised: January 2, 2009

(800)992-1180 • (908)526-8000 • FAX (908)231-8415 • E-Mail:techserv@stifirestop.com • Website:www.stifirestop.com



W-J-5124
PAGE 1 OF 2

C. **Sheathing Material*** - Use in conjunction with Item 3B. Foil-scrim-kraft or all service jacket material shall be wrapped around the outer circumference of the pipe insulation (Item 3B) with the kraft side exposed. Longitudinal and transverse joints sealed with metal fasteners or butt tape.

See **Sheathing Materials** (BVDV) category in the Building Materials Directory for names of manufacturers. Any sheathing material meeting the above specifications and bearing the UL Classification Marking with a Flame Spread Index of 25 or less and a Smoke Developed Index of 50 or less may be used.

4. **Firestop System** - The firestop shall consist of the following:

A. **Fill, Void or Cavity Material* - Wrap Strip** - Nom 1/8 in. (3 mm) or 3/16 in. (5 mm) thick intumescent material supplied in 2 in. (51 mm) wide strips or nom 1/4 in. (6 mm) thick intumescent material supplied in 1-1/2 in. (38 mm) wide strips faced on both sides with a plastic film. Wrap strip tightly-wrapped around each insulated metallic pipe and secured in place with one layer of aluminum foil tape. Wrap strips to protrude approx 1/2 in. (13 mm) beyond surface of the intumescent sheet (Item 4B) on each side of the wall.

SPECIFIED TECHNOLOGIES INC - SpecSeal RED Wrap Strip, SpecSeal BLU Wrap Strip or SpecSeal BLU2 Wrap Strip

B. **Fill, Void or Cavity Materials* - Composite Sheet** - Foil-faced sheet with galv steel sheet backer. Sheets may be installed as one solid sheet, cut in two pieces (top and bottom) or slit on one side of the penetrant(s). Opening in intumescent sheet to be max 3/8 in. (10 mm) larger than outer diameter of through penetrants. Sheets cut to lap min of 2 in. (51 mm) on the wall on all sides. Sheets to be installed on each side of wall with foil facing against wall surface and secured to wall with min 3/16 in. (5 mm) diam by 1-1/4 in. (32 mm) long steel concrete screws in conjunction with min 1-1/4 in. (32 mm) diam steel fender washers. Spacing of fasteners not to exceed 6 in. (152 mm) OC.

SPECIFIED TECHNOLOGIES INC - SpecSeal CS Composite Sheet

C. **Fill, Void or Cavity Materials* - Putty or Sealant** - Putty or sealant applied into annular space between the wrap strip and the edge of the opening in composite sheet to the full depth of the composite sheet (Item 4B). Additional thin layer of putty or sealant to be applied over wrap strip material (Item 4A) on both sides of the wall. Nom 3/16 in. (5 mm) cove bead of caulk or putty applied around base of through penetrants at their egress from the intumescent sheet on both sides of the wall. Nom 3/16 in. (5 mm) wide by 3/16 in. (5 mm) thick putty strips or 1/4 in. (6 mm) diam bead of sealant applied beneath composite sheet around entire perimeter of through opening on both sides of the wall.

SPECIFIED TECHNOLOGIES INC - SpecSeal Putty, SpecSeal Series SSS Sealant or SpecSeal LCI Sealant

D. **Steel Cover Strip** - Min 2 in. (51 mm) wide strip of min 0.020 in. (0.51 mm) thick (26 gauge) galv steel centered over entire length of each butted seam or slit made in the composite sheet (Item 4B). Prior to installation of the steel strip, the seam or slit in the intumescent sheet shall be covered with a nom 1/8 by 1/2 in. (3.2 by 13 mm) ribbon of putty or a nom 1/4 in. (6 mm) diam bead of sealant (Item 4C). Steel cover strip secured to galv steel sheet backer of composite sheet with steel sheet metal screws or rivets spaced max 3 in. (76 mm) OC on each side of seam or slit.

*Bearing the UL Classification Mark



Specified Technologies Inc. 210 Evans Way Somerville, NJ 08876

Reproduced courtesy of Underwriters Laboratories, Inc.

Created or Revised: January 2, 2009

(800)992-1180 • (908)526-8000 • FAX (908)231-8415 • E-Mail:techserv@stifirestop.com • Website:www.stifirestop.com



W-J-5124
PAGE 2 OF 2