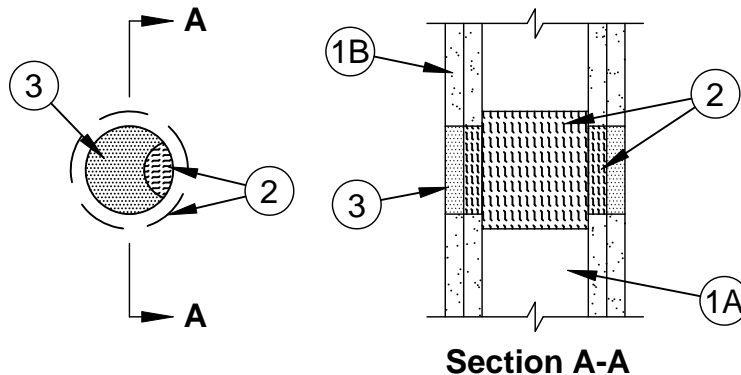


System No. W-L-0035

F Ratings - 1 and 2 Hr (See Item 1)
T Ratings - 1 and 2 Hr (See Item 1)
L Rating At Ambient - Less Than 1 CFM/sq ft
L Rating At 400 F - Less Than 1 CFM/sq ft



1. **Wall Assembly** - The 1 or 2 h fire rated gypsum board/stud wall assembly shall be constructed of the materials and in the manner described in the individual U300, U400 or V400 Series Wall and Partition Designs in the UL Fire Resistance Directory and shall include the following construction features:
 - A. **Studs** - Wall framing may consist of either wood studs or steel studs. Wood studs to consist of nom 2 by 4 in. (51 by 102 mm) lumber spaced 16 in. (406 mm) OC. Steel studs to be min 3-1/2 in. (89 mm) wide and spaced max 24 in. (610 mm) OC.
 - B. **Gypsum Board** - Thickness, type, number of layers and fasteners as specified in the individual Wall and Partition Design. Max diam of opening is 3 in. (76 mm). **The hourly F and T Ratings of the firestop system are equal to the hourly assembly rating of the wall assembly in which it is installed.**
- 1A. **Wall Assembly** - (Not Shown) - As an option to Item 1, the 1 or 2 hr fire rated gypsum board/steel stud shaft wall assembly shall be constructed of the materials and in the manner specified in the individual U400 or V400 Series Wall and Partition Designs in the UL Fire Resistance Directory and shall incorporate the following construction features:
 - A. **Steel Studs** - "C-H" or "C-T" shaped studs, min 2-1/2 in. (64 mm) wide by 1-1/2 in. (38 mm) deep, fabricated from min No. 25 gauge galv steel, spaced max 24 in. (610 mm) OC.
 - B. **Gypsum Board*** - 1 in. (25 mm) thick, 24 in. (610 mm) wide gypsum liner panels installed vertically. Max diam of opening is 3 in. (76 mm).
 - C. **Gypsum Board*** - 1/2 in. or 5/8 in. (13 or 16 mm) thick, 48 in. (1.2 m) wide gypsum board. The gypsum board type, thickness, number of layers, fastener type and sheet orientation shall be as specified in the individual Wall and Partition Design. Max diam of opening is 3 in. (76 mm). **The hourly F Rating of the firestop system is equal to the hourly fire rating of the wall assembly in which it is installed.**
2. **Packing Material** - Mineral wool batt insulation, nom 4 pcf (64 kg/m³) density, compressed and tightly-packed into wall cavity and opening as a permanent form. The packing material thickness shall be 1/2 in. (13 mm) thicker than the depth of the stud cavity to ensure a compression-fit. The packing material is installed within the wall cavity by cutting a plug approximately 1 in. (25 mm) larger than the diameter of the opening in the gypsum board layers, compressing the edges of the plug as it is slid through the first opening, and positioning the mineral wool plug such that the edges of the plug extend approx 1/2 in. (13 mm) beyond the periphery of the opening. In 2 hr walls, additional 5/8 in. (16 mm) depth of mineral wool shall be packed tightly into the opening within the gypsum board. Packing material recessed from wall surface as required to accommodate required thickness of sealant (Item 3).
3. **Fill, Void or Cavity Material* - Caulk or Sealant** - Min 5/8 in. (16 mm) thickness of fill material applied within annulus, flush with each surface of the wall assembly.

SPECIFIED TECHNOLOGIES INC - SpecSeal Series SSS Sealant, LCI Sealant, LC150 Sealant, or SIL300 Silicone Firestop Sealant

*Bearing the UL Classification Mark



Specified Technologies Inc. 210 Evans Way Somerville, NJ 08876

Reproduced courtesy of Underwriters Laboratories, Inc.
Created or Revised: February 17, 2010

(800)992-1180 • (908)526-8000 • FAX (908)231-8415 • E-Mail:techserv@stifirestop.com • Website:www.stifirestop.com



W-L-0035
PAGE 1 OF 1