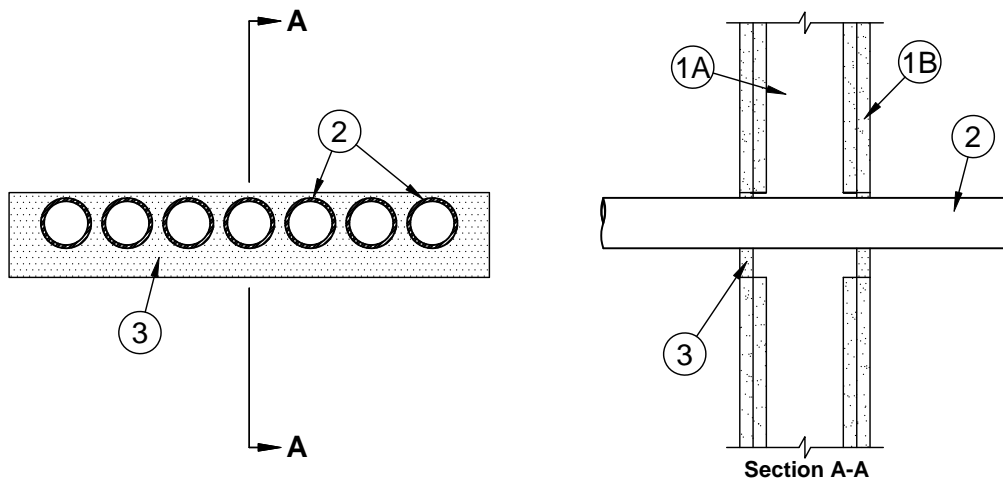




System No. W-L-1126

F Ratings - 1 & 2 Hr (See Item 1)

T Rating - 3/4 Hr



1. **Wall Assembly** - The 1 or 2 hr fire-rated gypsum wallboard/stud wall assembly shall be constructed of the materials and in the manner described in the individual U300 or U400 Series Wall or Partition Design in the UL Fire Resistance Directory and shall include the following construction features:

- A. **Studs** - Wall framing may consist of either wood studs or steel channel studs. Wood studs to consist of nom 2 by 4 in. (51 by 102 mm) lumber spaced 16 in. (406 mm) OC with nom 2 by 4 in. (51 by 102 mm) lumber end plates and cross braces. Steel studs to be min 3-5/8 in. (92 mm) wide and spaced max 24 in. (610 mm) OC. In wood stud/gypsum wallboard assemblies, additional framing members to be installed within stud cavity in such a manner to form a rectangular box with max dimensions of 14-1/2 in. (368 mm) wide by 4 in. (102 mm) high. In steel stud/gypsum wallboard assemblies, additional framing members to be installed within stud cavity in such a manner to form a rectangular box with max dimensions of 22-5/8 in. (575 mm) wide by 4 in. (102 mm) high.
- B. **Gypsum Board*** - 5/8 in. (16 mm) thick, 4 ft (1.2 m) wide with square or tapered edges. The gypsum wallboard type, thickness, number of layers, fastener type and sheet orientation shall be as specified in the individual U300 or U400 Series Design in the UL Fire Resistance Directory. If the through penetrants are installed in wood stud/gypsum wallboard assemblies, max area of opening is 58 sq in. (374 cm²) with max dimensions of 14-1/2 in. (368 mm) If the through penetrants are installed in steel stud/gypsum wallboard assemblies, max area of opening is 90-1/2 sq in. (584 cm²) with max dimensions of 22-5/8 in. (575 mm).

The hourly F Rating of the firestop system is equal to hourly fire rating of the wall assembly in which it is installed.

2. **Through Penetrants** - One or more pipes, conduits of tubing to be installed within the opening. The space between pipes, conduits or tubing shall be a nom 1/2 in. (13 mm). The space between pipes, conduits or tubing and periphery of opening shall be min 1/4 in. to max 1-5/16 in. (6 to 33 mm). Pipe, conduit or tubing to be rigidly supported on both sides of wall assembly. The following types and sizes of pipes, conduits or tubing may be used:
 - A. **Steel Pipe** - Nom 2 in. (51 mm) diam (or smaller) Schedule 10 (or heavier) steel pipe.
 - B. **Iron Pipe** - Nom 2 in. (51 mm) diam (or smaller) cast or ductile iron pipe.
 - C. **Conduit** - Nom 2 in. (51 mm) diam (or smaller) steel electrical metallic tubing or galv steel conduit.
3. **Fill, Void or Cavity Material* - Sealant** - Min 5/8 in. (16 mm) thickness of fill material applied within annulus, flush with both surfaces of wall.

SPECIFIED TECHNOLOGIES INC - SpecSeal Series SSS Sealant or SpecSeal LCI Sealant

*Bearing the UL Classification Mark



Specified Technologies Inc. 210 Evans Way Somerville, NJ 08876

Reproduced courtesy of Underwriters Laboratories, Inc.

Created or Revised: May 6, 2010

(800)992-1180 • (908)526-8000 • FAX (908)231-8415 • E-Mail:techserv@stifirestop.com • Website:www.stifirestop.com



W-L-1126
PAGE 1 OF 1