



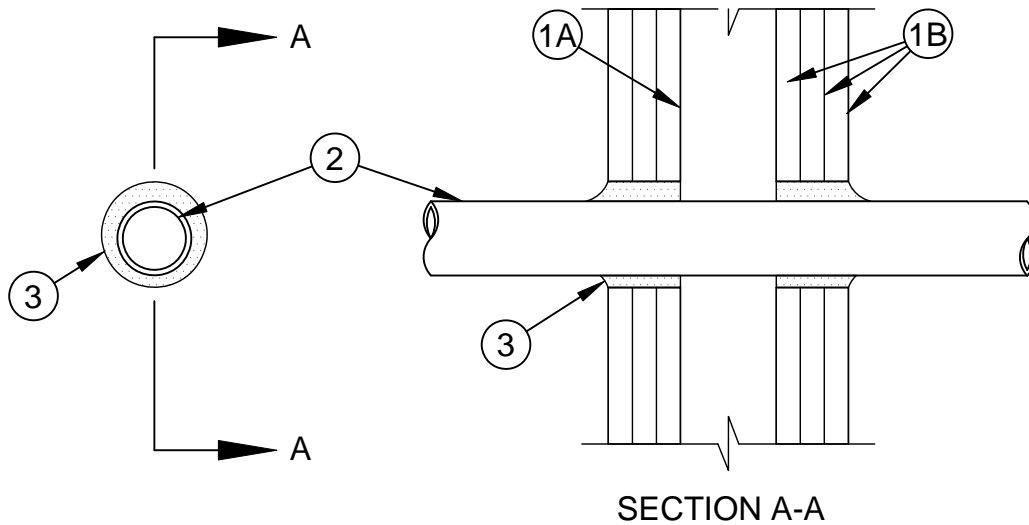
System No. W-L-1156

F Ratings - 1, 2 and 3 Hr (See Item 1)

T Rating - 0 Hr

L Rating at Ambient - Less Than 1 CFM/sq ft

L Rating at 400F - Less Than 1 CFM/sq ft



1. **Wall Assembly** - The 1, 2 or 3 hr fire-rated gypsum wallboard/stud wall assembly shall be constructed of the materials and in the manner described in the individual U300 or U400 Series Wall or Partition Designs in the UL Fire Resistance Directory and shall include the following construction features:
 - A. **Studs** - Wall framing shall consist of either wood studs or steel channel studs. Wood studs to consist of nom 2 by 4 in. (51 by 102 mm) lumber spaced 16 in. (406 mm) OC. Steel studs to be min 3-5/8 in. (92 mm) wide and spaced 24 in. (610 mm) OC.
 - B. **Gypsum Board*** - 1/2 or 5/8 in. (13 or 16 mm) thick, 4 ft (1.2 m) wide with square or tapered edges. The gypsum wallboard type, thickness, number of layers, fastener type and sheet orientation shall be as specified in the individual U300 or U400 Series Designs in the UL Fire Resistance Directory. Max diam of opening is 1-1/2 in. (38 mm)

The hourly F Rating of the firestop system is equal to the hourly fire rating of the wall assembly in which it is installed.
2. **Through Penetrants** - One metallic pipe or conduit installed concentrically or eccentrically within the firestop system. The annular space within the firestop system shall be min 1/4 in. to max 1/2 in. (6 to 13 mm). Pipe or conduit to be rigidly supported on both sides of wall assembly. The following types and sizes of metallic pipe or conduit may be used:
 - A. **Steel Pipe** - Nom 3/4 in. (19 mm) diam (or smaller) Schedule 5 (or heavier) steel pipe.
 - B. **Conduit** - Nom 3/4 in. (19 mm) diam (or smaller) rigid steel conduit, steel electrical metallic tubing (EMT) or flexible steel conduit.
3. **Fill, Void or Cavity Materials* - Sealant** - Fill material installed to completely fill annular space between pipe or conduit and gypsum wallboard with a min 1/4 in. (6 mm) diam bead of caulk applied to perimeter of pipe or conduit at its egress from both sides of the wall.

SPECIFIED TECHNOLOGIES INC - SpecSeal Series SSS Sealant or SpecSeal LCI Sealant

*Bearing the UL Classification Mark



Specified Technologies Inc. 210 Evans Way Somerville, NJ 08876

Reproduced courtesy of Underwriters Laboratories, Inc.

Created or Revised: May 6, 2010

(800)992-1180 • (908)526-8000 • FAX (908)231-8415 • E-Mail:techserv@stifirestop.com • Website:www.stifirestop.com



W-L-1156
PAGE 1 OF 1