



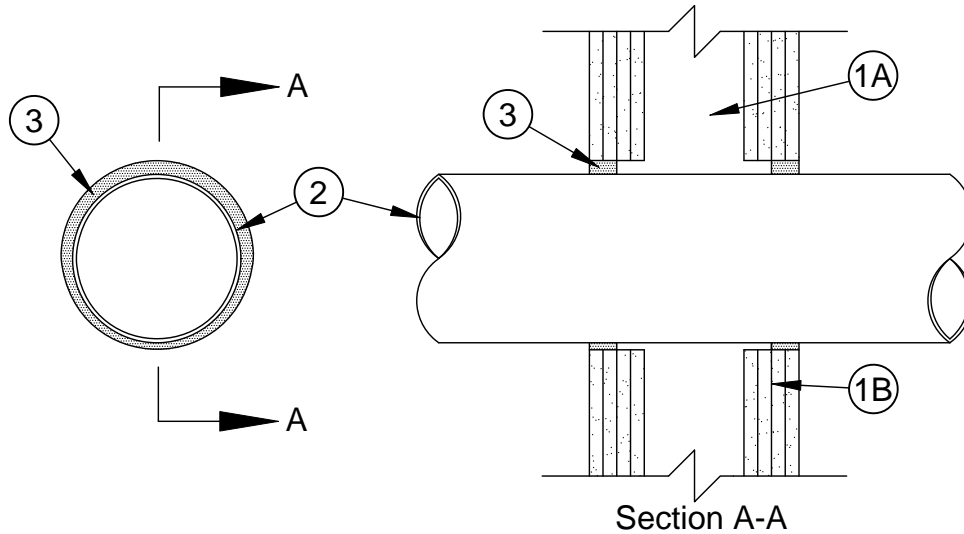
System No. W-L-1172

F Ratings - 3 and 4 Hr (See Item 1)

T Rating - 0 Hr

L Rating At Ambient - Less Than 1 CFM/sq ft

L Rating At 400 F - Less Than 1 CFM/sq ft



1. **Wall Assembly** - The 3 or 4 hr fire-rated gypsum wallboard/steel stud wall assembly shall be constructed of the materials and in the manner specified in the individual U400 Series Wall and Partition Designs in the UL Fire Resistance Directory and shall include the following construction features:

- A. **Studs** - Wall framing shall consist of steel channel studs. Steel studs to be min 3-5/8 in. (92 mm) wide and spaced max 24 in. (610 mm) OC.
- B. **Gypsum Board*** - Multiple layers of min 1/2 in. (13 mm) thick gypsum wallboard. The gypsum wallboard type, thickness, number of layers and orientation shall be as specified in the individual Wall and Partition Design. Max diam of opening is 13-1/2 in. (343 mm).

The hourly F Rating of the firestop system is equal to the hourly fire rating of the wall assembly in which it is installed.

2. **Through Penetrants** - One metallic pipe, conduit or tubing to be installed either concentrically or eccentrically within the firestop system. The annular space between the pipe, conduit or tubing and the periphery of the opening shall be min 1/4 in. to max 1/2 in. (6 to 13 mm). Pipe, conduit or tubing to be rigidly supported on both sides of floor or wall assembly. The following types and sizes of metallic pipes, conduits or tubing may be used:

- A. **Steel Pipe** - Nom 12 in. (305 mm) diam (or smaller) Schedule 10 (or heavier) steel pipe.
- B. **Iron Pipe** - Nom 12 in. (305 mm) diam (or smaller) cast or ductile iron pipe.
- C. **Conduit** - Nom 6 in. (152 mm) diam (or smaller) rigid steel conduit, nom 4 in. (102 mm) diam (or smaller) electrical metallic tubing or nom 1 in. (25 mm) diam (or smaller) flexible steel conduit.
- D. **Copper Tubing** - Nom 6 in. (152 mm) diam (or smaller) Type M (or heavier) copper tubing.
- E. **Copper Pipe** - Nom 6 in. (152 mm) diam (or smaller) Regular (or heavier) copper pipe.

3. **Fill, Void or Cavity Materials* - Sealant** - Min 1 in. (25 mm) thickness of fill material applied within the annulus, flush with both surfaces of wall.

SPECIFIED TECHNOLOGIES INC - SpecSeal Series SSS Sealant or SpecSeal LCI Sealant

*Bearing the UL Classification Mark



Specified Technologies Inc. 210 Evans Way Somerville, NJ 08876

Reproduced courtesy of Underwriters Laboratories, Inc.

Created or Revised: May 6, 2010

(800)992-1180 • (908)526-8000 • FAX (908)231-8415 • E-Mail:techserv@stifirestop.com • Website:www.stifirestop.com



W-L-1172
PAGE 1 OF 1