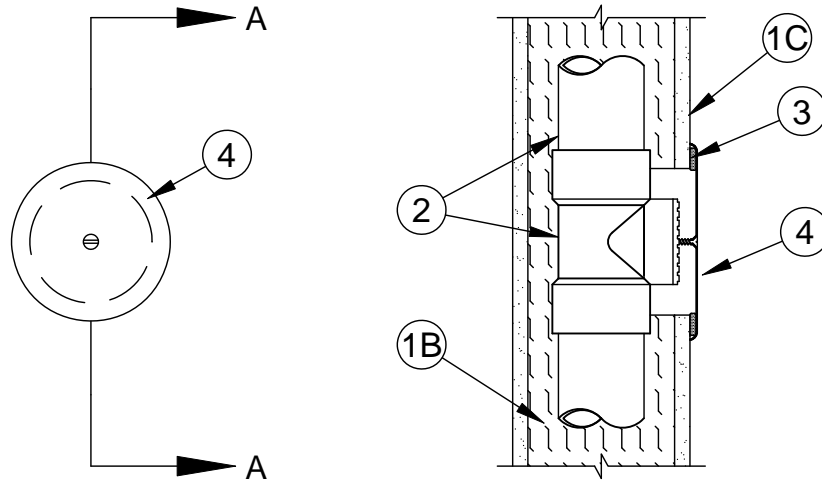




System No. W-L-2552

F Rating - 1 Hr
T Rating - 1 Hr



SECTION A-A

1. **Wall Assembly** - The 1 hr fire rated gypsum board/stud wall assembly shall be constructed of the materials and in the manner specified in the individual U300, U400 or V400 Series Wall and Partition Designs in the UL Fire Resistance Directory and shall include the following construction features:
 - A. **Studs** - (Not Shown) - Wall framing to consist of min 2 by 6 in. (51 by 152 mm) wood or steel channel studs spaced in accordance with the individual U300, U400, or V400 Series Wall and Partition Designs.
 - B. **Batts and Blankets*** - Glass fiber or mineral wool batt insulation placed to fill stud cavity containing nonmetallic DWV pipe with clean-out tee (Item 2). Glass fiber insulation to have a min density of 0.9 pcf (14 kg/m³) and a min R-13 thermal insulation rating. Mineral wool batt insulation to have a min density of 3 pcf (48 kg/m³).
See **Batts and Blankets** (BKNV) Category in the Building Materials Directory and Batts and Blankets (BZJZ) Category in the Fire Resistance Directory for names of Classified Companies.
 - C. **Gypsum Board*** - One layer of nom 5/8 in. (16 mm) thick gypsum board, as specified in the individual Wall and Partition Design. Max diam of opening is 5 in. (127 mm).
2. **Piping System** - One nom 3 in. (76 mm) diam (or smaller) Schedule 40 solid core or cellular core PVC or ABS pipe with PVC or ABS clean-out tee, with threaded plug, for use in vented (drain, waste or vent) piping system installed within stud cavity. The threaded PVC or ABS clean-out plug is to be centered behind opening in gypsum board.
3. **Fill, Void or Cavity Material* - Putty or Sealant** - Min 3/4 by 5/16 in. (19 by 8 mm) continuous band of putty or min 1/2 in. (13 mm) diam continuous bead of sealant applied as a gasket around perimeter of opening.
SPECIFIED TECHNOLOGIES INC - SpecSeal Putty, SpecSeal SSS Series Sealant, SpecSeal LCI Sealant, Pensil 300 Sealant or Type WF300 Firestop Caulk (U300-Series Wall and Partition Designs only)
4. **Cover Plate** - Min 6-1/2 in. (165 mm) diam 24 gauge (or heavier) stainless steel cover plate secured to PVC or ABS clean-out plug with stainless steel screw through center of plate. Cover plate to be tightened squarely to wall and shall overlap surface of gypsum board min 3/4 in. (19 mm) around entire perimeter of opening.

*Bearing the UL Classification Mark



Specified Technologies Inc. 210 Evans Way Somerville, NJ 08876

Reproduced courtesy of Underwriters Laboratories, Inc.
Created or Revised: May 14, 2010

(800)992-1180 • (908)526-8000 • FAX (908)231-8415 • E-Mail:techserv@stifirestop.com • Website:www.stifirestop.com



W-L-2552
PAGE 1 OF 1