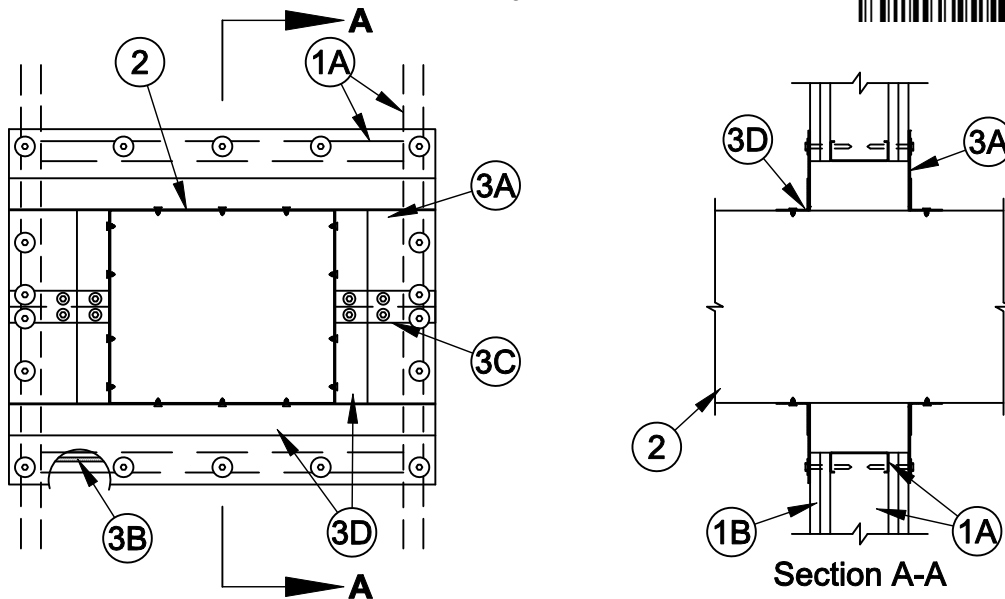


System No. W-L-7131

F Ratings - 1 and 2 Hr (See Item 1)

T Rating - 0 Hr



1. **Wall Assembly** - The 1 or 2 hr fire rated gypsum board/stud wall assembly shall be constructed of the materials and in the manner described within the individual U400 or V400 Series Wall and Partition Designs in the UL Fire Resistance Directory and shall incorporate the following construction features:

- A. **Steel Studs** - Steel studs to be min 3-1/2 in. (89 mm) wide and spaced max 24 in. (610 mm) OC. Additional studs shall be installed horizontally to form a rectangular box around the through penetrant (Item 2).
- B. **Gypsum Board*** - Thickness, type, number of layers and fasteners as specified in the individual Wall and Partition Design. The opening shall be sized to be min 1 in. (25 mm) to max 3 in. (76 mm) wider and higher than the width and depth of the duct.

The hourly F Rating of the firestop system is equal to the hourly fire rating of the wall in which it is installed.

2. **Through Penetrant** - Max 12 by 14 in. (305 by 356 mm) No. 24 gauge (or heavier) steel duct, to be installed within the firestop system. Steel duct to be rigidly supported on both sides of wall assembly.
3. **Firestop System** - The firestop system shall consist of the following:

- A. **Fill, Void or Cavity Materials* - Composite Sheet** - Foil-faced sheet with galv steel sheet backer. Sheets may be installed as one solid sheet, cut in two pieces (top and bottom) or split on one side of the penetrant(s). Sheets cut to tightly follow the contour of the steel duct with an annular space less than or equal to 1/8 in. (3 mm). Sheets cut to lap min of 2 in. (51 mm) on the wall on all sides. Sheets to be installed on each side of wall with foil facing against wall surface and secured to steel framing, through gypsum board layers, with min 2 in. (51 mm) long steel drywall screws in conjunction with min 1-1/4 in. (32 mm) diam steel fender washers. Spacing of fasteners not to exceed 6 in. (152 mm) OC.

SPECIFIED TECHNOLOGIES INC - SpecSeal CS Composite Sheet

- B. **Fill, Void or Cavity Materials* - Putty or Sealant** - After installation of composite sheet, apply putty or sealant into annular space between penetrant and the edge of the opening in composite sheet to the full depth of the composite sheet (Item 3A). Nom 3/16 in. cove bead of putty or sealant applied around base of the duct at its egress from the intumescent sheet on both sides of the wall. Nom 3/16 in. (5 mm) wide by 3/16 in. (5 mm) thick putty strips or nom 1/4 in. (6 mm) diam bead of sealant positioned under composite sheet around entire perimeter of through opening on both sides of the wall.

SPECIFIED TECHNOLOGIES INC - SpecSeal Putty, SpecSeal Series SSS Sealant or SpecSeal LCI Sealant

- C. **Steel Cover Strip** - Min 2 in. (51 mm) wide strip of min 0.020 in. (0.51 mm) thick (26 gauge) galv steel centered over entire length of each butted seam or slit made in the intumescent sheet (Item 3B). Prior to installation of the steel strip, the seam or slit in the intumescent sheet shall be covered with a nom 1/8 by 1/2 in. (3.2 by 13 mm) ribbon of putty or a nom 1/4 in. (6 mm) diam bead of sealant (Item 3A). Steel cover strip secured to galv steel sheet backer of intumescent sheet with steel sheet metal screws or rivets spaced max 3 in. (76 mm) OC on each side of seam or slit.
- D. **Retaining Angles** - Min 2 by 2 in. (51 by 51 mm) No. 16 gauge (or heavier) galv steel angles installed on all four sides of duct on both sides of wall assembly. Angles on top and bottom surfaces of duct to extend the full length of composite sheet such that the ends extend over wall framing. Angles attached to duct with min 1/4 in. (6 mm) long, No. 10 (or larger) steel sheet metal screws spaced a max of 1 in. (25 mm) from each end of duct and spaced a max of 6 in. (152 mm) OC.

*Bearing the UL Classification Mark



Specified Technologies Inc. 210 Evans Way Somerville, NJ 08876

Reproduced courtesy of Underwriters Laboratories, Inc.

Created or Revised: January 2, 2009

(800)992-1180 • (908)526-8000 • FAX (908)231-8415 • E-Mail:techserv@stifirestop.com • Website:www.stifirestop.com



W-L-7131
PAGE 1 OF 1