



### System No. WW-D-0020

(Limited To Fire Exposure On Interior Only)

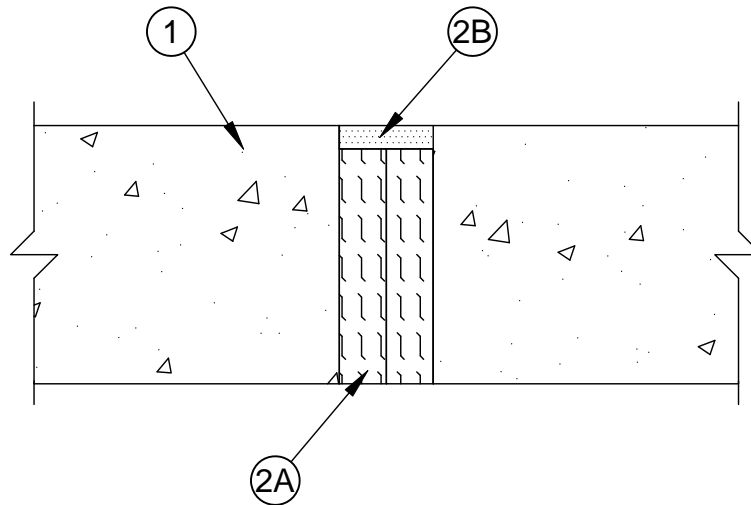
Assembly Rating - 4 Hr

L Rating At Ambient - Less Than 1 CFM/Lin ft

L Rating At 400 F - Less Than 1 CFM/Lin ft

Nominal Joint Width - 2 in.

Class II Movement Capabilities - 12.5% Compression or Extension



1. **Wall Assembly** - Min 5-1/2 in. (140 mm) thick reinforced lightweight or normal weight (100-150 pcf or 1600-2400 kg/m3) structural concrete. Wall may also be constructed of any UL Classified **Concrete Blocks\***.  
See **Concrete Blocks** (CAZT) category in the Fire Resistance Directory for names of manufacturers.
2. **Joint System** - Max width of joint (at time of installation of joint system) is 2 in. (51 mm). The joint system is designed to accommodate a max 12.5 percent compression or extension from its installed width. The joint system shall consist of forming and fill materials, as follows:

A. **Forming Material\*** - Min 4 pcf (64 kg/m3) mineral wool batt insulation installed in joint opening as a permanent form. Pieces of batt cut to min 5 in. (127 mm) width and installed edge-first into joint opening, parallel with joint direction, such that batt sections are compressed min 50 percent in thickness and that the compressed batt sections are recessed from the exterior surface of the wall to accommodate the required thickness of fill material. Adjoining lengths of batt to be tightly butted with butted seams spaced min 16 in. (406 mm) apart along the length of the joint.

**FIBREX INSULATIONS INC** - FBX Safing Insulation

**IIG MINWOOL L L C** - MinWool-1200 Safing

**ROCK WOOL MANUFACTURING CO** - Delta Board

**THERMAFIBER INC** - Type SAF

**ROXUL ASIA SDN BHD** - SAFE

**ROXUL INC** - SAFE

**THERMAFIBER INC** - Type SAF

B. **Fill, Void or Cavity Material\* - Sealant** - Min 1/2 in. (13 mm) thickness of fill material applied within the joint, flush with exterior surface of wall.

**SPECIFIED TECHNOLOGIES INC** - Pensil 300 Sealant or SpecSeal Series SIL300 Sealant

\*Bearing the UL Classification Mark



**Specified Technologies Inc. 210 Evans Way Somerville, NJ 08876**

Reproduced courtesy of Underwriters Laboratories, Inc.

Created or Revised: April 27, 2010

(800)992-1180 • (908)526-8000 • FAX (908)231-8415 • E-Mail:techserv@stifirestop.com • Website:www.stifirestop.com



WW-D-0020  
PAGE 1 OF 1