

# System No. C-AJ-1045

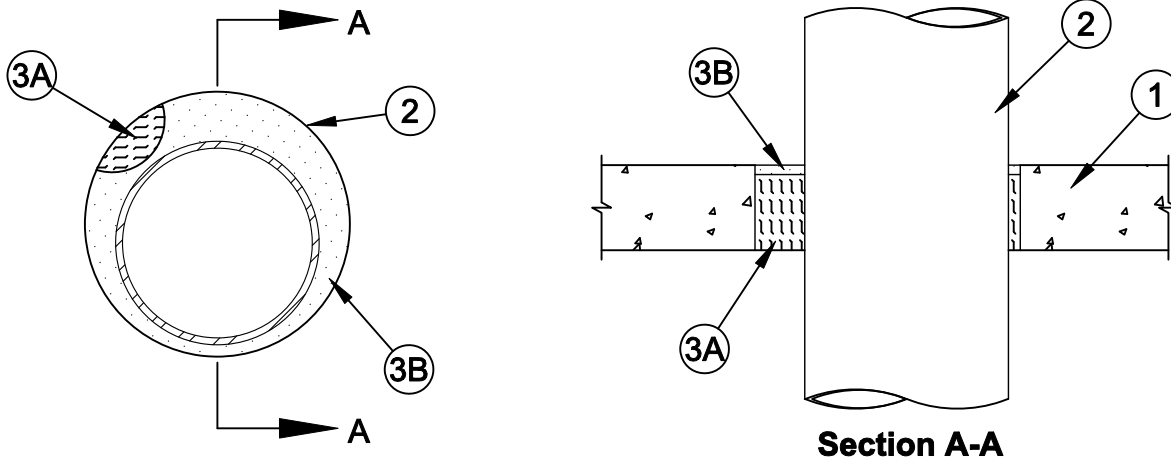
F Rating - 3 Hr

T Rating - 0 Hr

L Rating At Ambient - Less Than 1 CFM/sq ft

L Rating At 400 F - Less Than 1 CFM/sq ft

W Rating - Class 1 (See Item 3B)



1. **Floor or Wall Assembly** - Min 4-1/2 in. (114 mm) thick reinforced lightweight or normal weight (100-150 pcf or 1600-2400 kg/m<sup>3</sup>) concrete floor or min 5 in. (127 mm) thick reinforced lightweight or normal weight concrete wall. Wall may also be constructed of any UL Classified **Concrete Blocks\***. Max diam of opening is 14 in. (356 mm).  
See **Concrete Blocks (CAZT)** category in the Fire Resistance Directory for names of manufacturers.
2. **Through Penetrants** - One metallic pipe, conduit or tubing to be installed either concentrically or eccentrically within the firestop system. The annular space shall be min 5/8 in. (16 mm) to max 3-1/4 in. (83 mm). Pipe, conduit or tubing to be rigidly supported on both sides of floor or wall assembly. The following types and sizes of metallic pipes, conduits or tubing may be used:
  - A. **Steel Pipe** - Nom 10 in. (254 mm) diam (or smaller) Schedule 5 (or heavier) steel pipe.
  - B. **Iron Pipe** - Nom 10 in. (254 mm) diam (or smaller) cast or ductile iron pipe.
  - C. **Conduit** - Nom 4 in. (102 mm) diam (or smaller) steel electrical metallic tubing or nom 6 in. (152 mm) diam (or smaller) steel conduit.
  - D. **Copper Tubing** - Nom 2 in. (51 mm) diam (or smaller) Type L (or heavier) copper tubing.
  - E. **Copper Pipe** - Nom 2 in. (51 mm) diam (or smaller) Regular (or heavier) copper pipe.
3. **Firestop System** - The firestop system shall consist of the following:
  - A. **Packing Material** - Min 4 in. (102 mm) thickness of min 4 pcf (64 kg/m<sup>3</sup>) mineral wool batt insulation firmly packed into opening as a permanent form. Packing material to be recessed from top surface of floor or from both surfaces of wall as required to accommodate the required thickness of fill material.
  - B. **Fill, Void or Cavity Material\* - Caulk** - Min 1/2 in. (13 mm) thickness of fill material applied within the annulus, flush with top surface of floor or with both surfaces of wall.

**MOMENTIVE PERFORMANCE MATERIALS** - Pensil 100 Caulk for floors and walls.

**SPECIFIED TECHNOLOGIES INC** - Pensil 100 Sealant for floors and walls, Pensil 300 Sealant or SpecSeal Series SIL300 Sealant for floors and walls and Pensil 300 S/L Sealant or SpecSeal Series SIL300SL Sealant for floors only.

**W Rating applies only when Pensil 300, Pensil 300 S/L, SpecSeal Series SIL300 or SpecSeal Series SIL300SL Sealants are used.**

\*Bearing the UL Classification Mark

**FOR CANADIAN APPLICATIONS:**  
When evaluated in accordance with ULC-S115, this system has the following ratings:

System No.	Rating Hr.			
	F	FT	FH	FTH
C-AJ-1048	3	0	3	0

For more information, please see the XHHW7.R14288 section in the UL Fire Resistance Directory entitled Fill, Void or Cavity Materials Certified for Canada.



**Specified Technologies Inc. 210 Evans Way Somerville, NJ 08876**

Reproduced courtesy of Underwriters Laboratories, Inc.

Created or Revised: October 09, 2009

(800)992-1180 • (908)526-8000 • FAX (908)231-8415 • E-Mail:techserv@stifirestop.com • Website:www.stifirestop.com



C-AJ-1048  
PAGE 1 OF 1