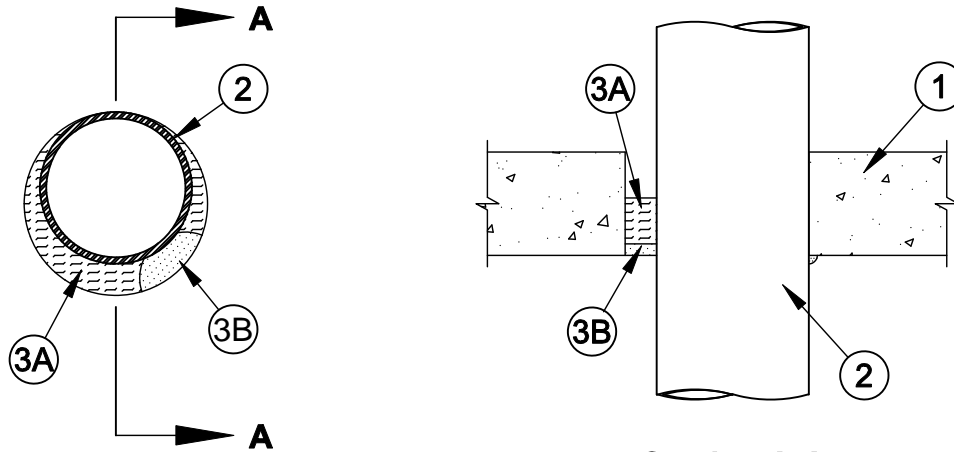




### System No. C-AJ-1232

F Rating - 2 Hr

T Rating - 0 Hr



**Section A-A**

- Floor or Wall Assembly** - Min 4-1/2 in. (114 mm) thick reinforced lightweight or normal weight (100-150 pcf or 1600-2400 kg/m<sup>3</sup>) concrete. Floor may also be constructed of any min 6 in. (152 mm) thick UL Classified hollow-core **Precast Concrete Units\***. Max diam of opening is 8 in. (203 mm). Max diam of opening in floor constructed of hollow-core precast concrete units is 7 in. (178 mm).

See **Precast Concrete Units** (CFTV) category in the Fire Resistance Directory for names of manufacturers.

- Through Penetrant** - One metallic pipe or conduit to be installed either concentrically or eccentrically within the firestop system. The annular space between pipes or conduits and periphery of opening shall be min 0 in. (point contact) to max 1-3/8 in. (35 mm). Pipe or conduit to be rigidly supported on both sides of floor or wall assembly. The following types and sizes of metallic pipes or conduits may be used:
  - Steel Pipe** - Nom 6 in. (152 mm) diam (or smaller) Schedule 10 (or heavier) steel pipe.
  - Iron Pipe** - Nom 6 in. (152 mm) diam (or smaller) cast or ductile iron pipe.
  - Conduit** - Nom 4 in. (102 mm) diam (or smaller) steel electrical metallic tubing or nom 6 in. (152 mm) diam steel conduit.
- Firestop System** - The firestop system shall consist of the following:
  - Packing Material** - Min 2 in. (51 mm) thickness of min 4 pcf (64 kg/m<sup>3</sup>) mineral wool batt insulation firmly packed into opening as a permanent form. When floor is constructed of hollow-core precast concrete units, depth of packing material to be increased to extend above top of hollow core penetrated by pipe or conduit. Packing material to be recessed from bottom surface of floor or from either surface of solid concrete wall as required to accommodate the required thickness of fill material.
  - Fill, Void or Cavity Material\* - Sealant** - Min 1/2 in. (13 mm) thickness of fill material applied within the annulus, flush with bottom surface of floor or with one surface of solid concrete wall assembly. At the point contact location between through penetrant and concrete, a min 3/8 in. (10 mm) diam bead of fill material shall be applied at the concrete/through penetrant interface on the bottom surface of floor and on one surface of solid concrete wall.

**SPECIFIED TECHNOLOGIES INC** - SpecSeal LC 150 Sealant, SpecSeal LE600 Sealant

\*Bearing the UL Classification Mark

**FOR CANADIAN APPLICATIONS:**

When evaluated in accordance with ULC-S115, this system has the following ratings:

System No.	Rating Hr.			
	F	FT	FH	FTH
C-AJ-1232	2	0	2	0

For more information, please see the XHHW7.R14288 section in the UL Fire Resistance Directory entitled Fill, Void or Cavity Materials Certified for Canada.



**Specified Technologies Inc. 210 Evans Way Somerville, NJ 08876**

Reproduced courtesy of Underwriters Laboratories, Inc.

Created or Revised: October 09, 2009

(800)992-1180 • (908)526-8000 • FAX (908)231-8415 • E-Mail:techserv@stifirestop.com • Website:www.stifirestop.com

